

# Viewing and using US Topo GeoPDF® files within the Mac OS® environment

## Prerequisites

Adobe® Reader® 9.x or Adobe Reader X software is required and may be downloaded for free at <http://get.adobe.com/reader/>. Adobe Acrobat® 9.x or Adobe Acrobat X software may be used in lieu of Adobe Reader, if available.

## Opening the map file

When first opening a US Topo on a Mac® computer, you will receive a warning with a brief description telling you this is a GeoPDF, see Figures 1 and 2, and asking if you want to download and install the free plug-in from TerraGo Technologies. Click on “No,” TerraGo Technologies currently does not support the Mac OS.

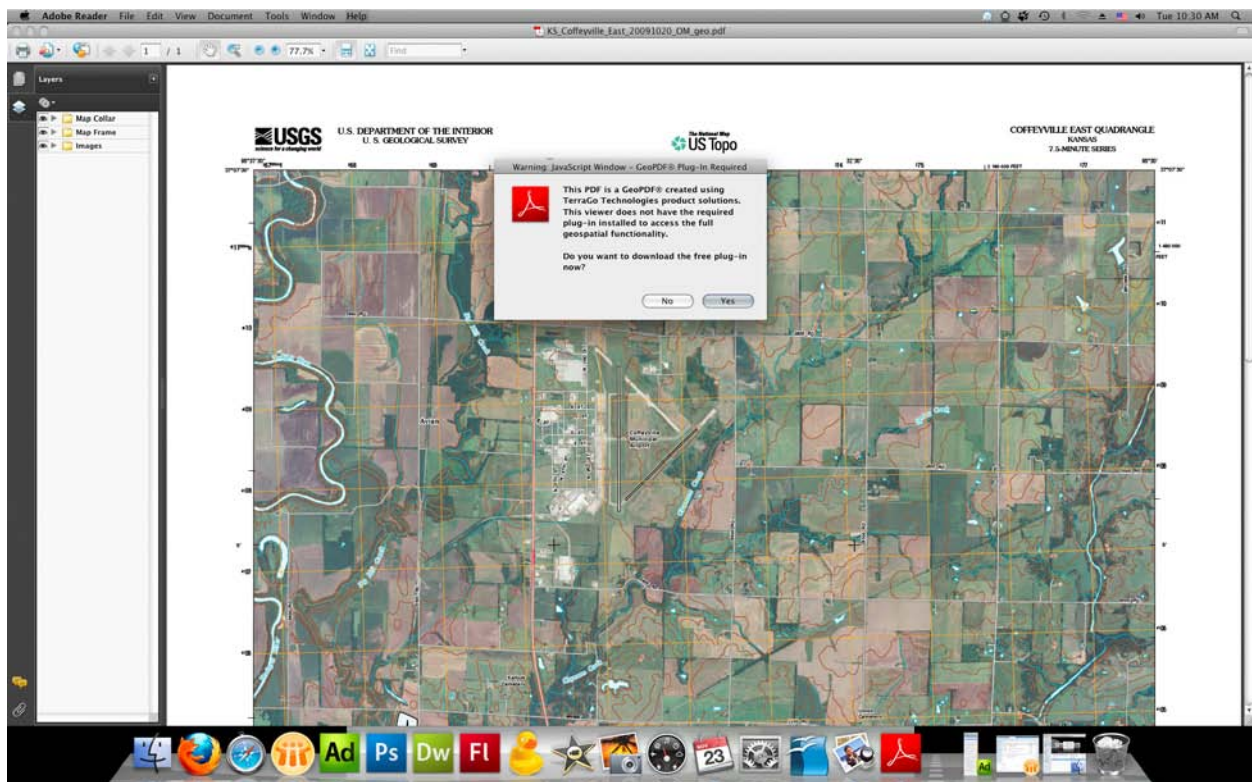


Figure 1 – US Topo initial view within Adobe Reader 9.4, with warning panel.

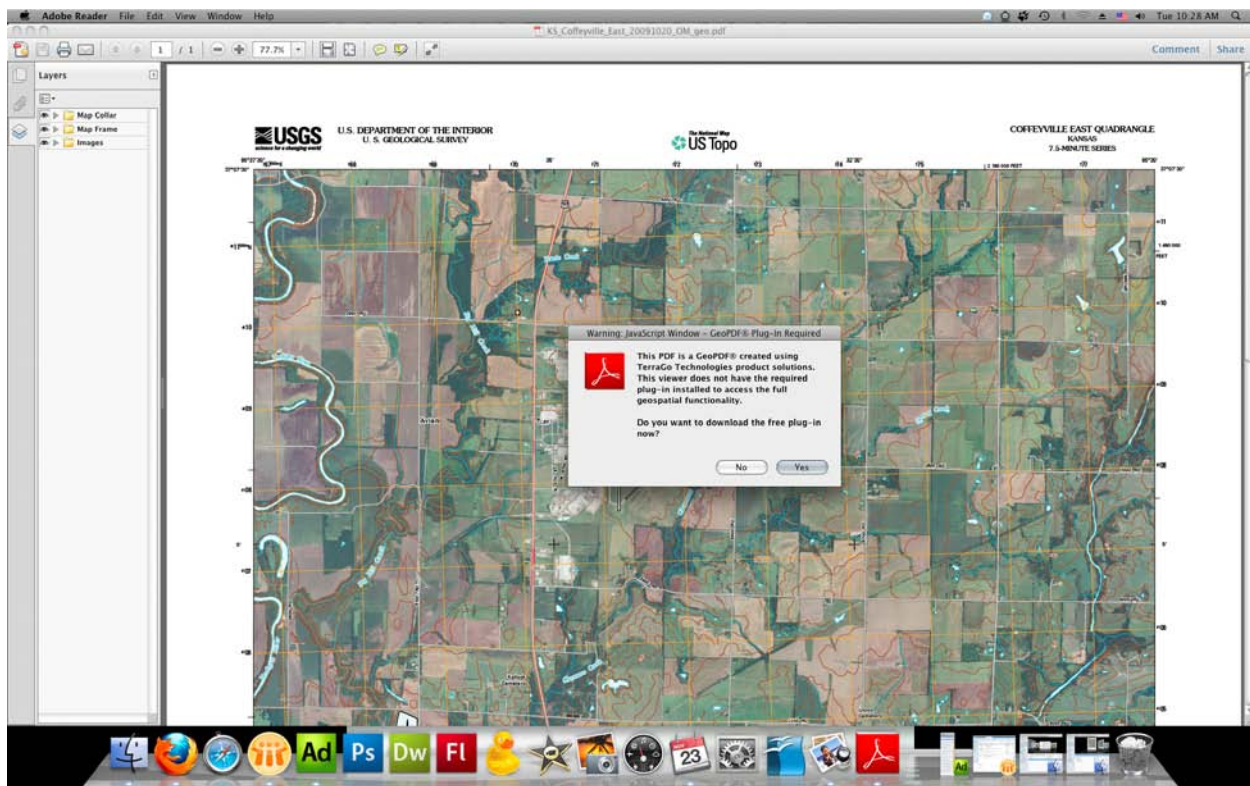


Figure 2 – US Topo initial view within Adobe Reader X, with warning panel.

### Using the Adobe “Geospatial Location Tool”

To measure coordinate information, launch the “Geospatial Location Tool.” If using Adobe Reader 9.x or Acrobat 9.x select “Tools” from the menu bar, and then select “Analysis,” and then select the “Geospatial Location Tool.” If using Adobe Reader X or Acrobat X, select “Edit” from the menu bar, and then select “Analysis,” and then select the “Geospatial Location Tool.” See Figures 3 and 4.

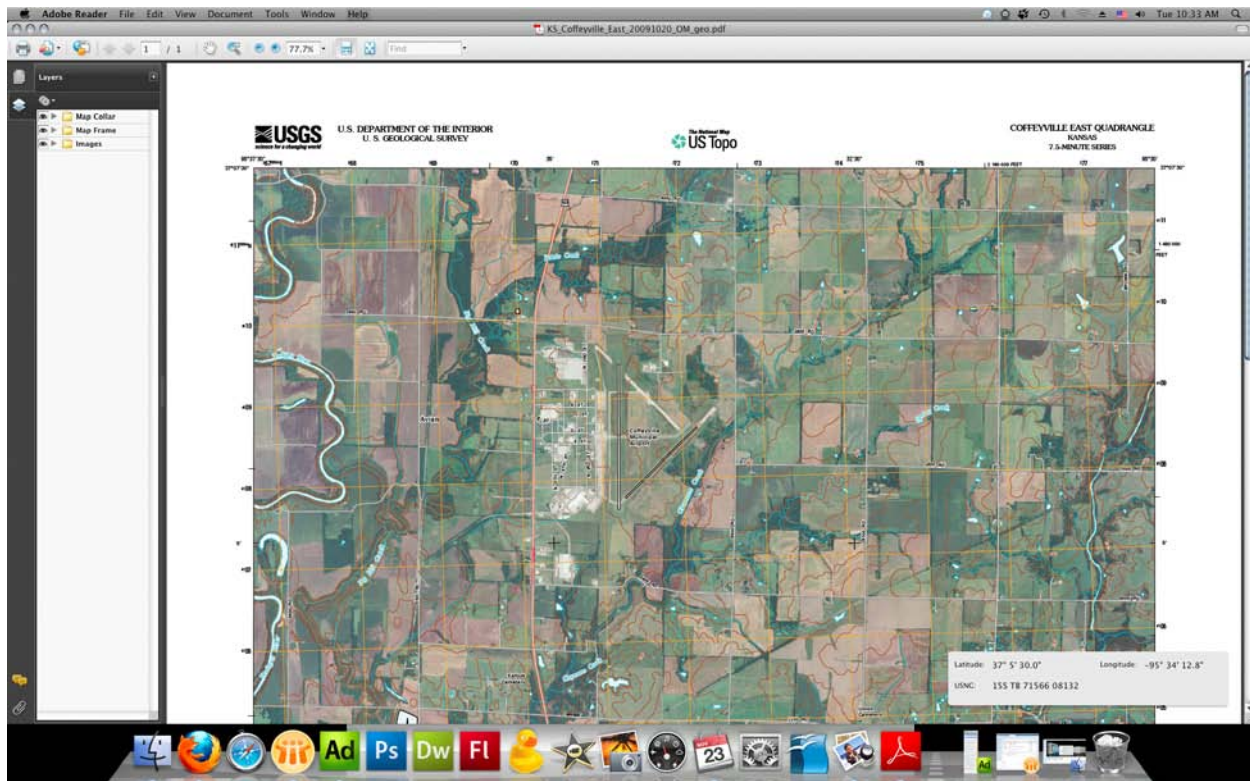


Figure 3 – US Topo view within Adobe Reader 9.4, after "Geospatial Location Tool" has been launched.



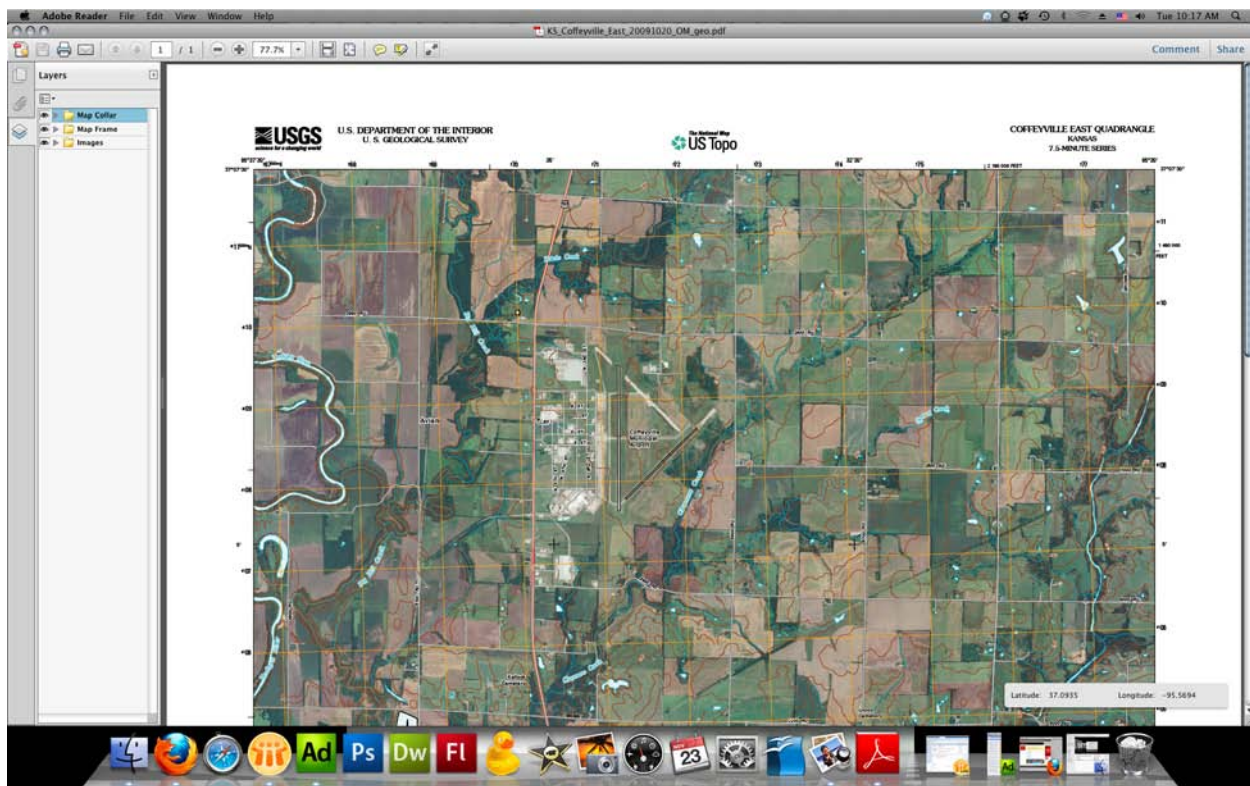


Figure 4 – US Topo view within Adobe Reader X, after "Geospatial Location Tool" has been launched.

## Modifying the Geospatial Location Tool Preferences

Also one can modify the "Geospatial Location Tool" preferences to change for how the coordinate information is measured and displayed. To modify the preferences, launch the "Preference Panel," click on "Adobe Reader" in the menu and then click on "Preferences" (Cmd+K). Then select "Measuring (Geo)" from the categories listed on the left of the panel, see Figures 5 and 6. To change how the coordinate information is measured and displayed make changes in either the "Geographic Location" section or the "Latitude and Longitude Format" section, depending which version of Adobe's software you are using. Note there are also preferences that affect length and area measurements, however these tools are not currently available for use in Adobe Reader because US Topo and "Digital Map – Beta" GeoPDF files do not yet support this tool.

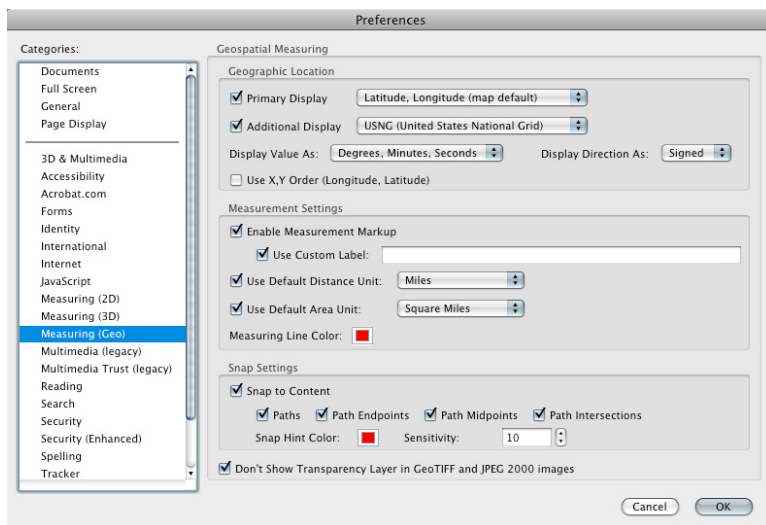
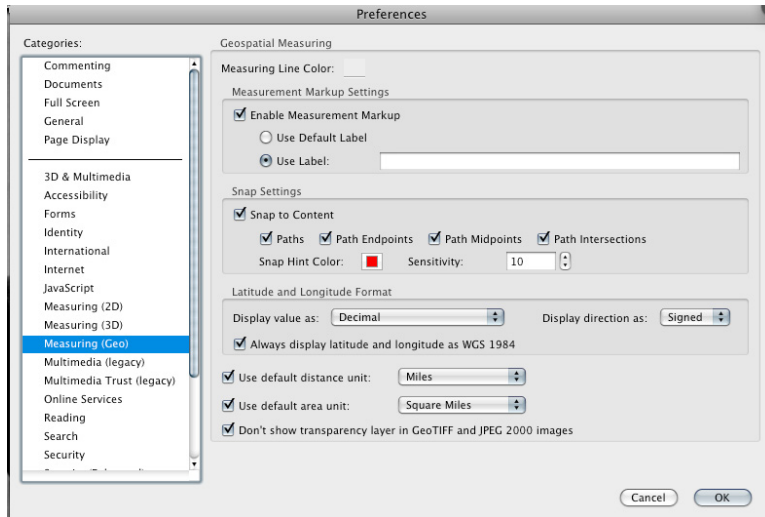


Figure 5 – Adobe Reader 9.4, "Preferences Panel."



**Figure 6 – Adobe Reader X, "Preferences Panel."**