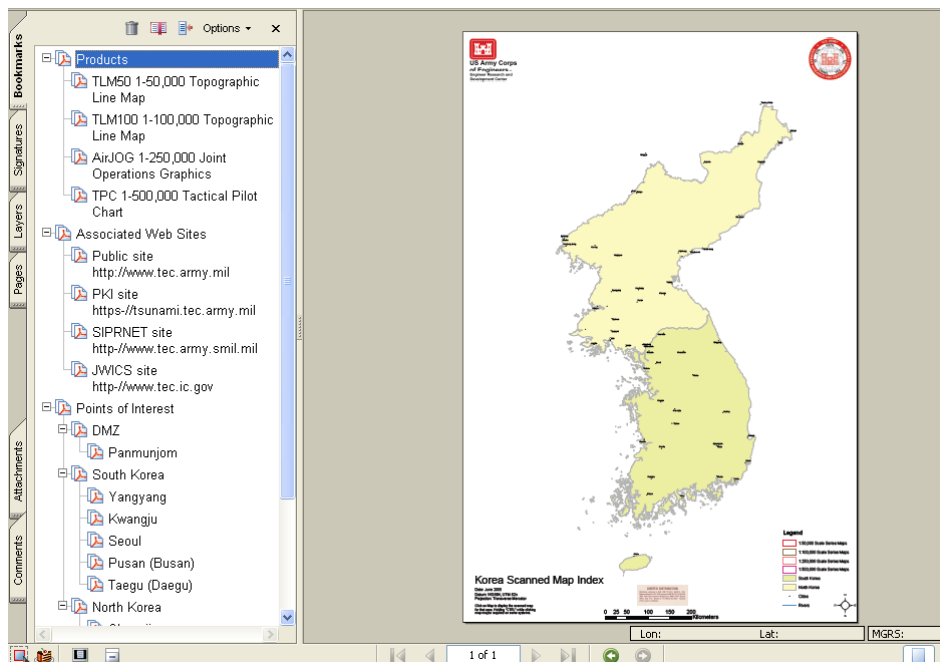


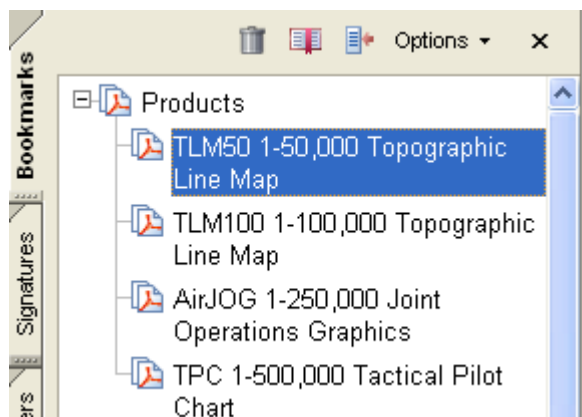
## Using the Index Sheet

Each of the Country map sets includes an Index sheet, which is also a GeoPDF file.

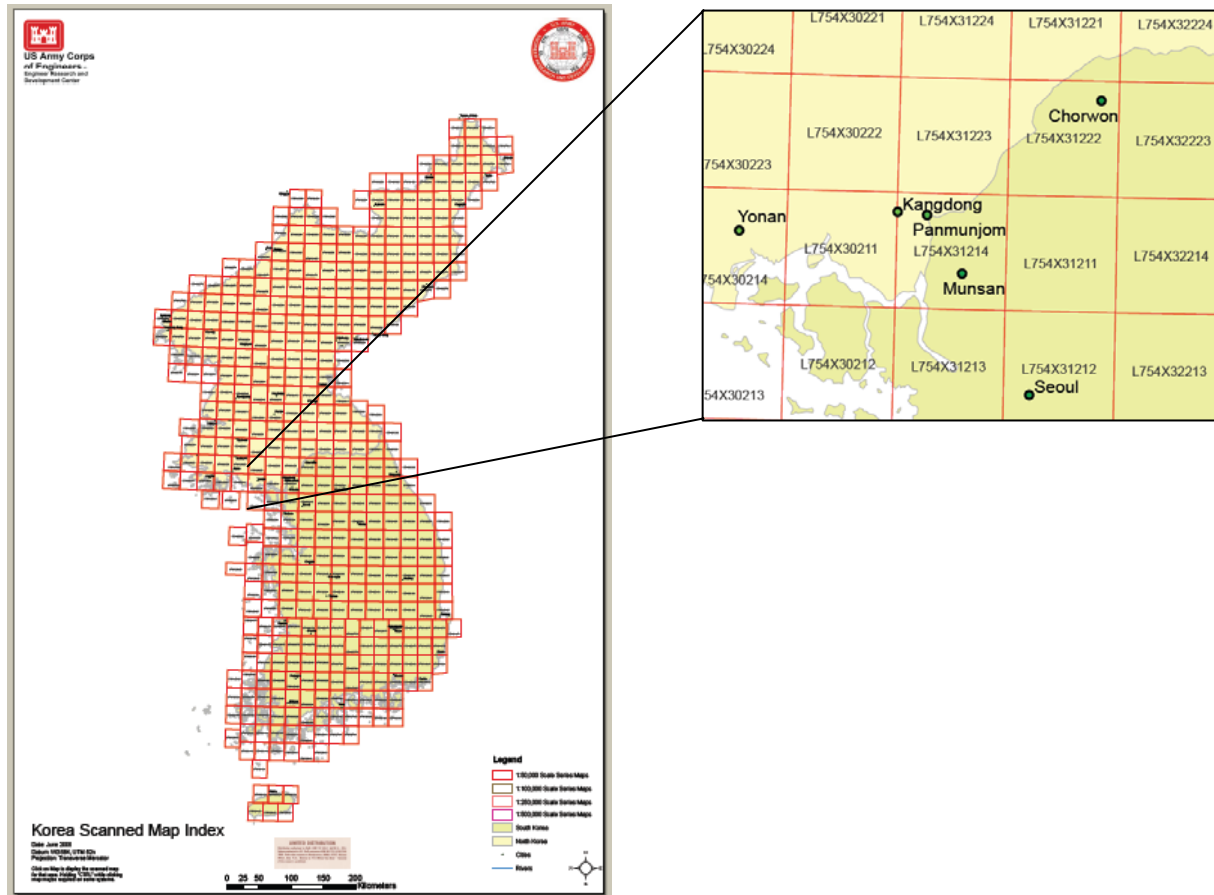
### Korea:



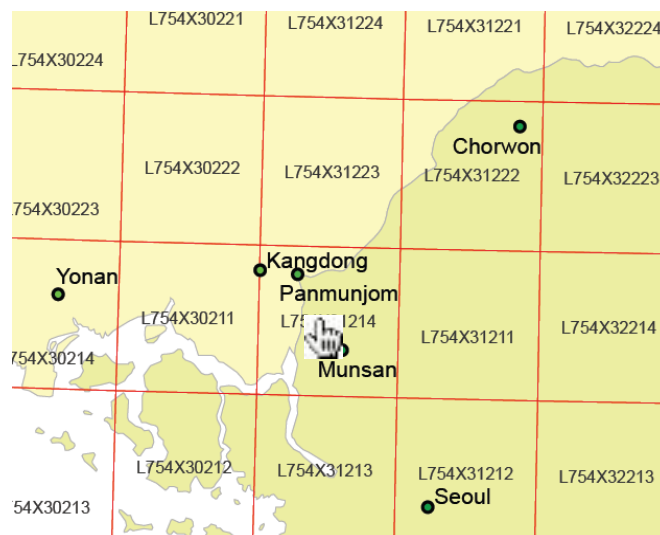
By clicking on the appropriate **Products** bookmark;



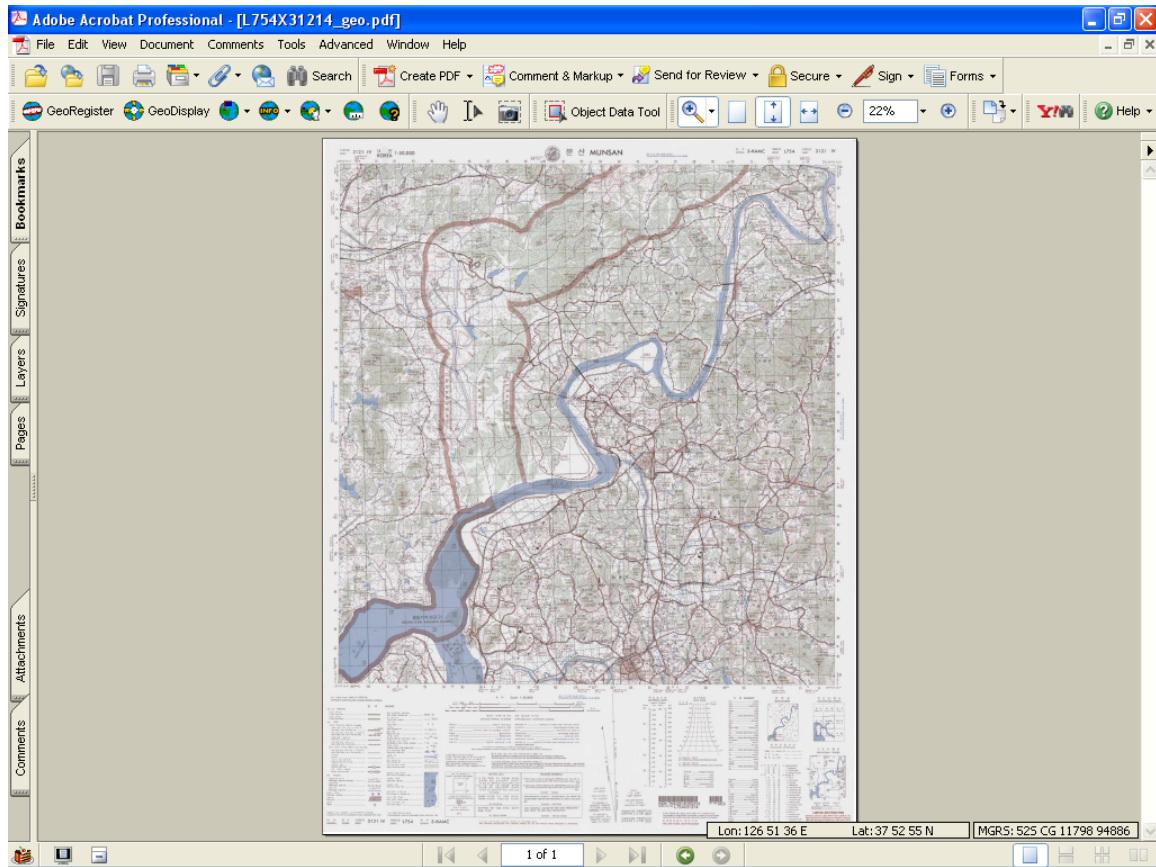
you can turn on and off the index grid for each product in this map set.



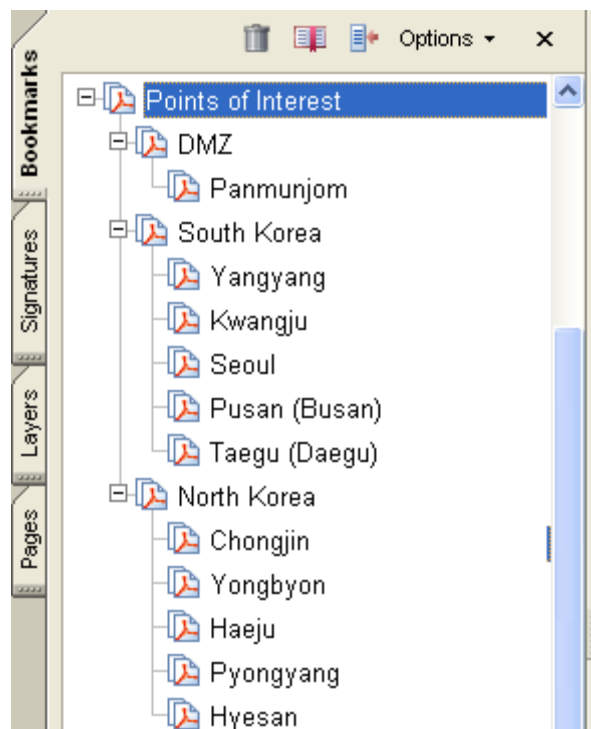
Once you find the map sheet you want simply click on its hyperlink



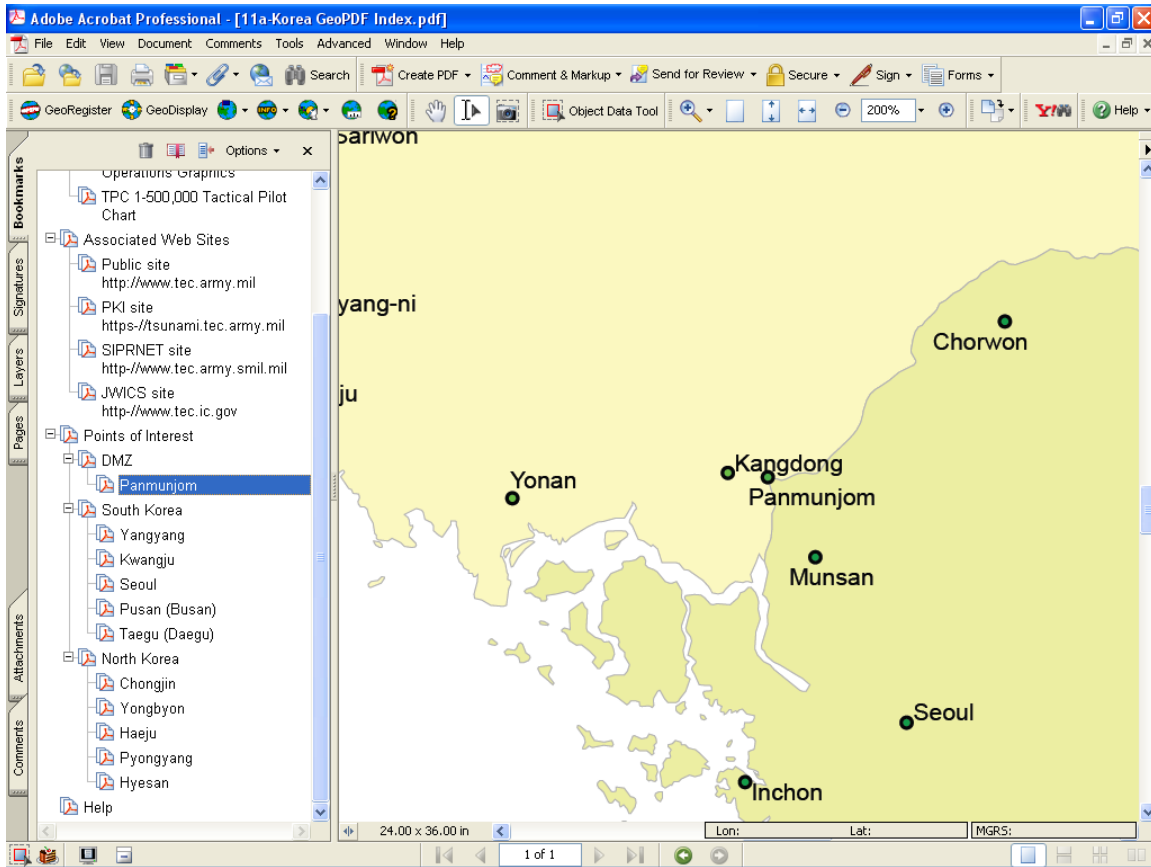
and that file will come up in a new Adobe window.



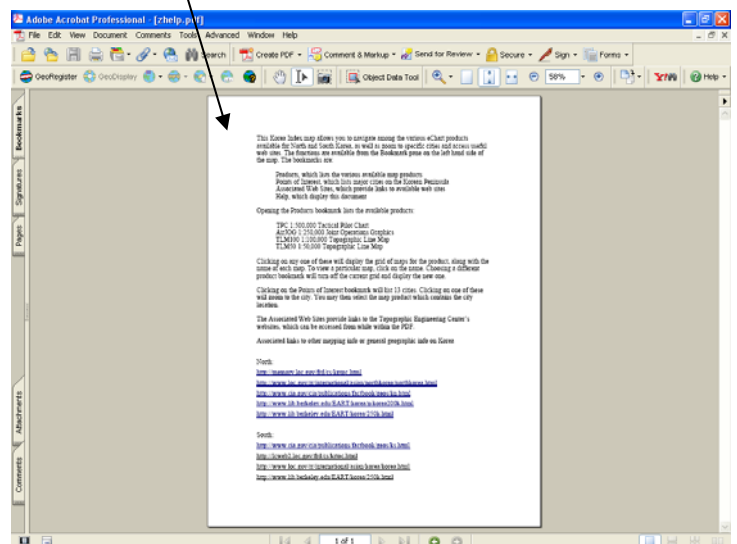
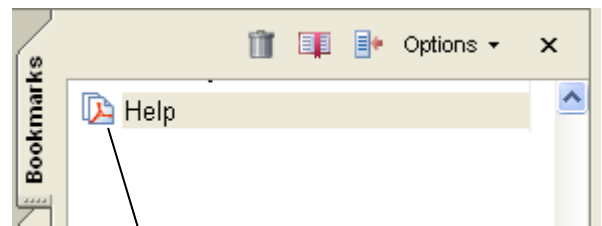
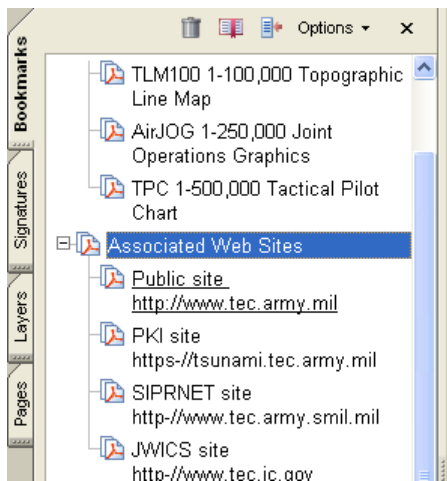
By clicking on the appropriate **Points of Interest** bookmark;



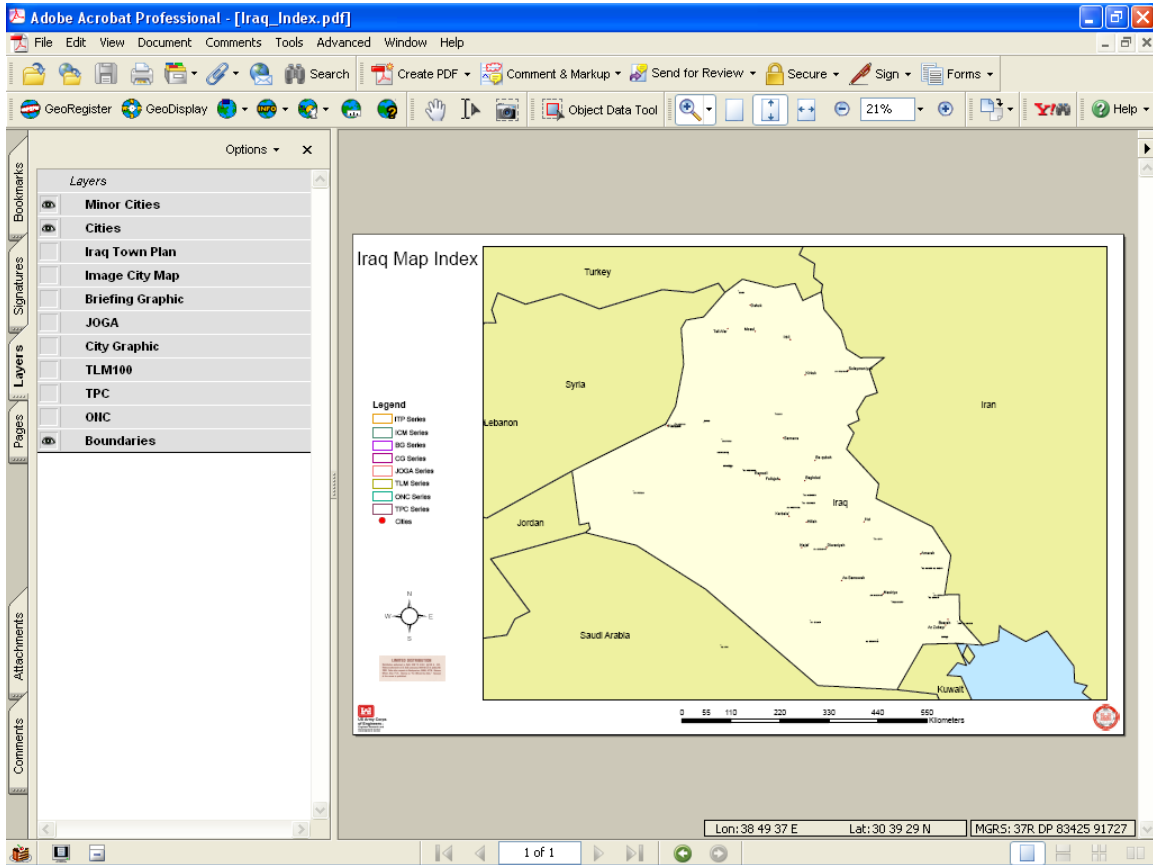
you can zoom to that location on the index sheet.



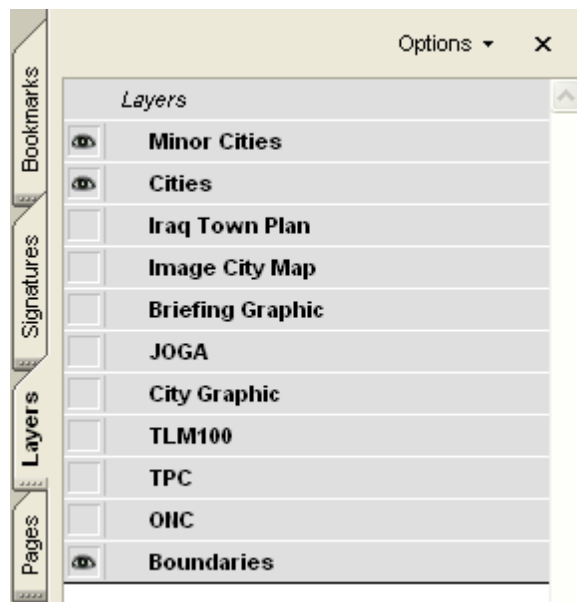
You can also use the **Associated Web Sites** bookmarks or the **Help** bookmark to get to one of TECs web sites or to access the Help file



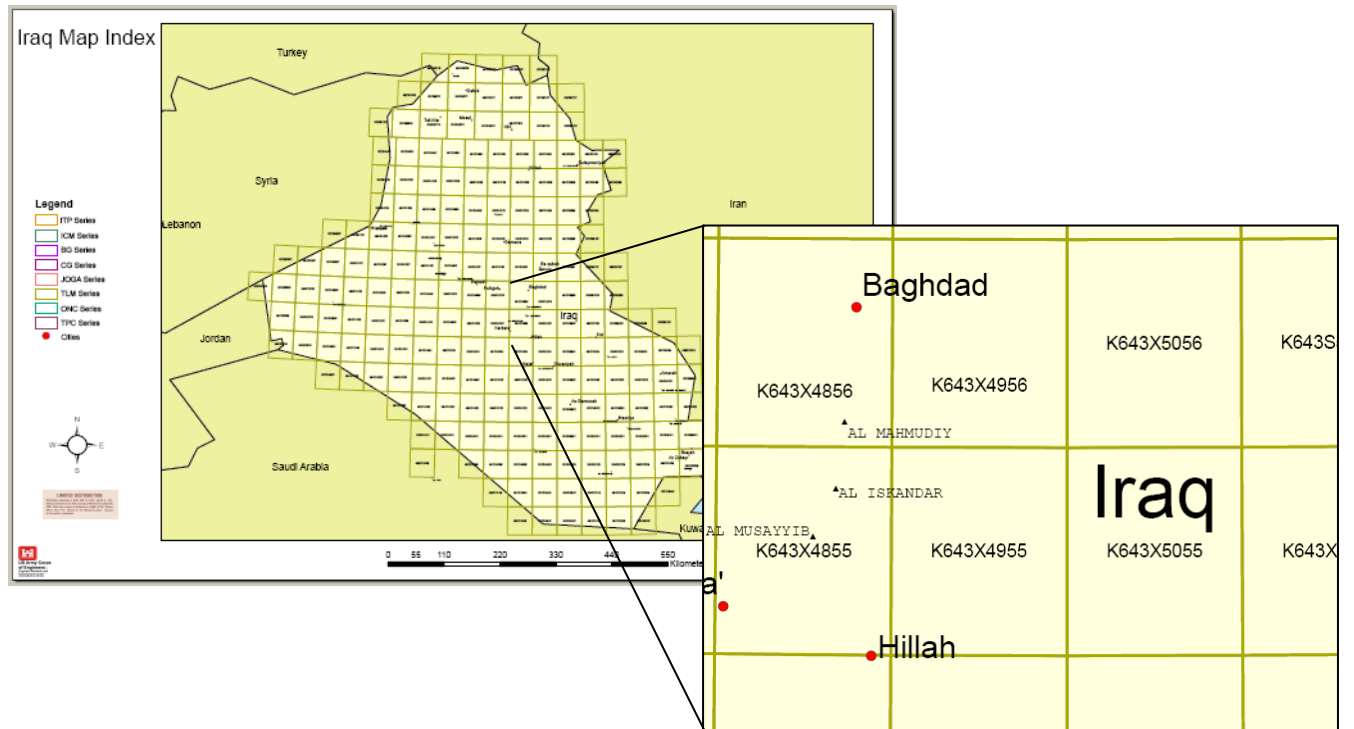
## Iraq, Afghanistan and Pakistan:



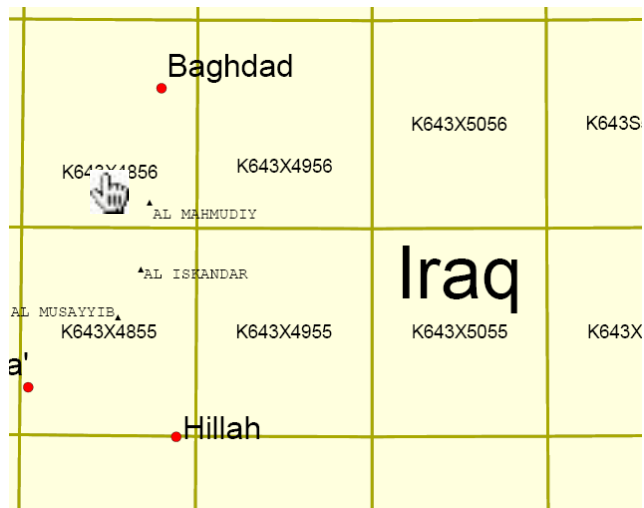
By clicking on the appropriate layer;



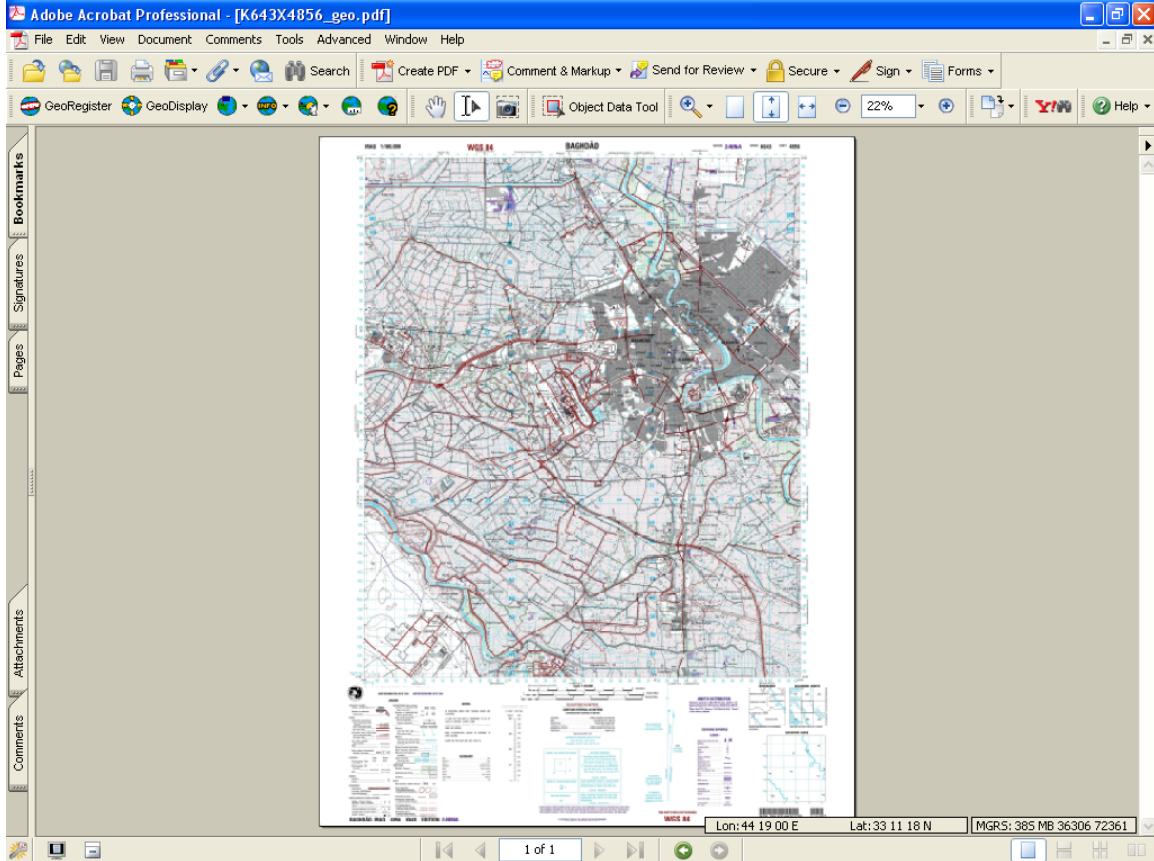
you can turn on and off the index grid for each product in this map set.



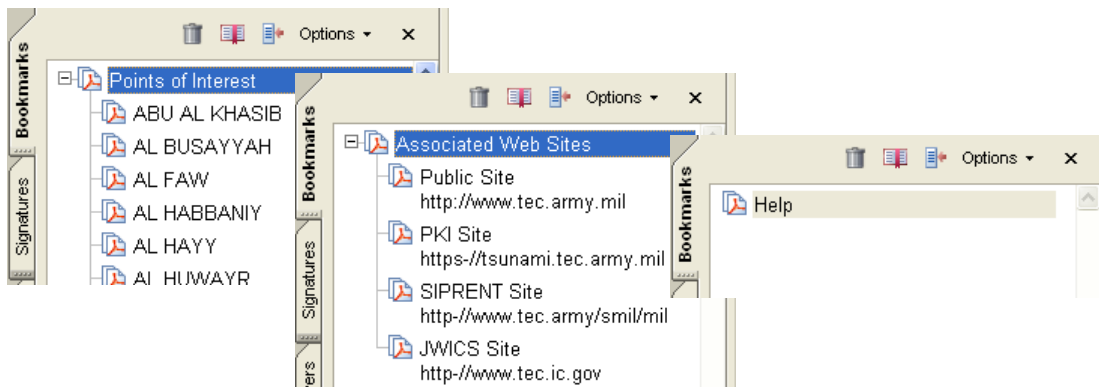
Once you find the map sheet you want simply click on its hyperlink



and that file will come up in a new Adobe window.



The Iraq, Afghanistan and Pakistan index sheets also have **Points of Interest, Associated Web Sites and Help** bookmarks and the function the same way as they do in the Korea index sheet.



Created by [Ray Caputo](#) U.S. Army Corps of Engineers Topographic Engineering Center