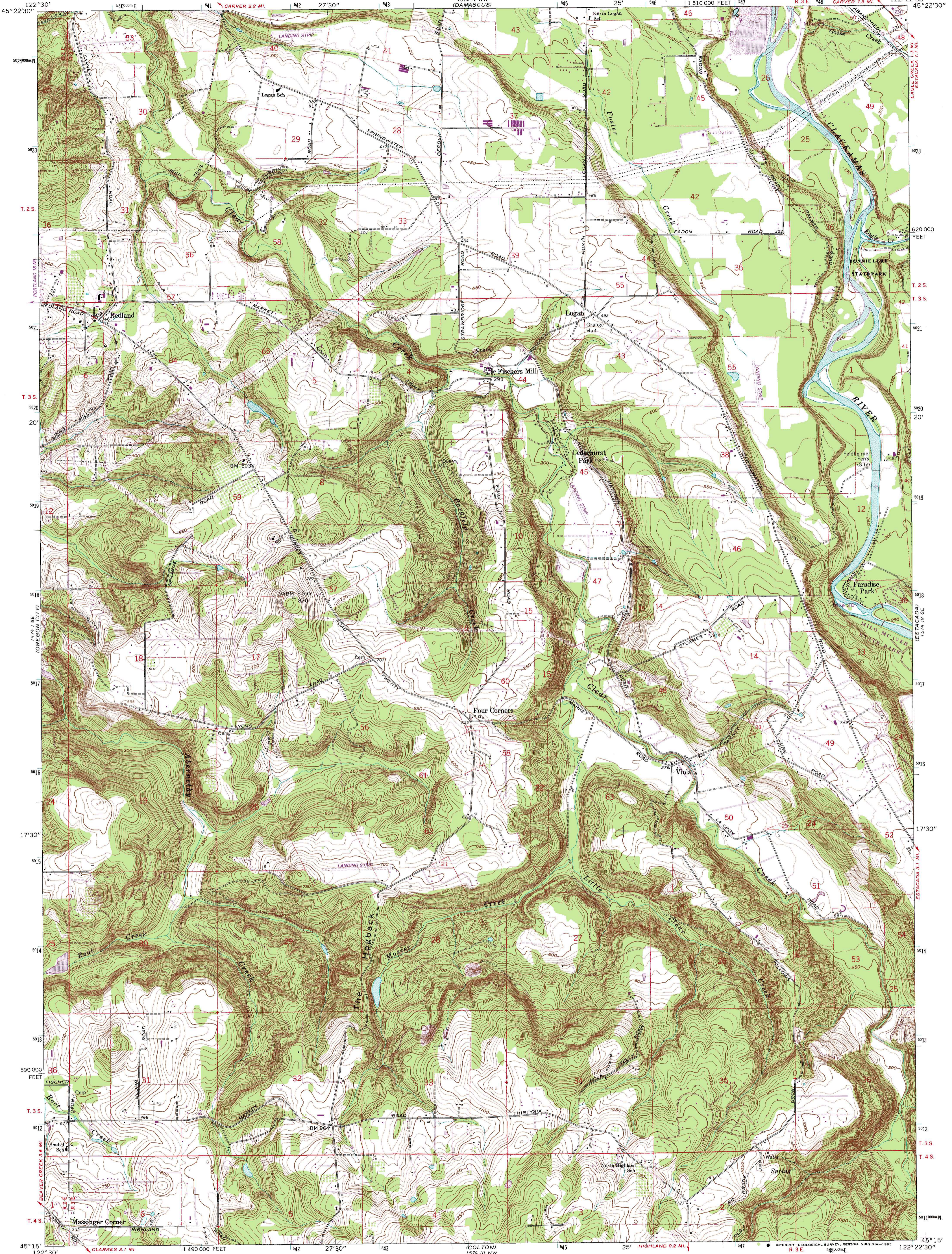


GLADSTONE

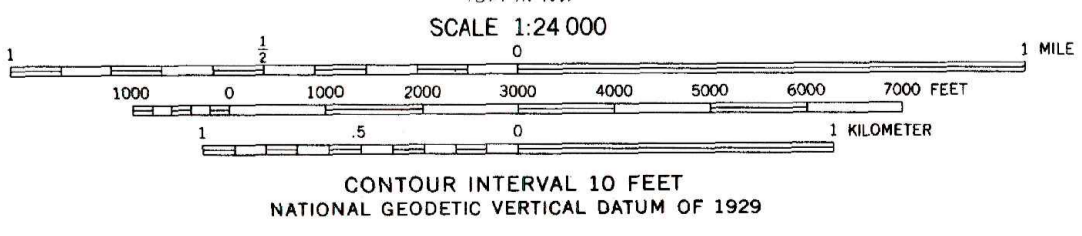
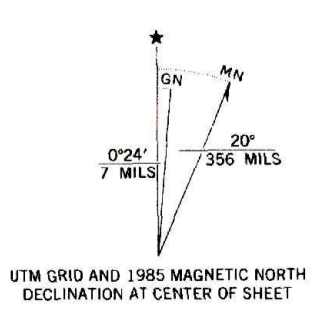
UNITED STATES  
DEPARTMENT OF THE INTERIOR  
GEOLOGICAL SURVEY

REDLAND QUADRANGLE  
OREGON-CLACKAMAS CO.  
7.5 MINUTE SERIES (TOPOGRAPHIC)  
SW/4 SANDY 15' QUADRANGLE

COLTON



Mapped, edited, and published by the Geological Survey  
Control by USGS  
Topography from aerial photographs by photogrammetric methods  
Aerial photographs taken 1952. Field check 1954  
Revised from aerial photographs taken 1960. Field check 1961  
Polyconic projection. 1927 North American datum  
10,000-foot grid based on Oregon coordinate system, north zone  
1000-meter Universal Transverse Mercator grid ticks,  
zone 10, shown in blue  
To place on the predicted North American Datum 1983,  
move the projection lines 22 meters north and  
94 meters east as shown by dashed corner ticks  
There may be private inholdings within the boundaries of the  
National or State reservations shown on this map  
Fine red dashed lines indicate selected fence lines



CONTOUR INTERVAL 10 FEET  
NATIONAL GEODETIC VERTICAL DATUM OF 1929

THIS MAP COMPLIES WITH NATIONAL MAP ACCURACY STANDARDS  
FOR SALE BY U. S. GEOLOGICAL SURVEY, DENVER, COLORADO 80225  
OR RESTON, VIRGINIA 22092  
A FOLDER DESCRIBING TOPOGRAPHIC MAPS AND SYMBOLS IS AVAILABLE ON REQUEST



QUADRANGLE LOCATION  
Revisions shown in purple compiled from aerial  
photographs taken 1981 and other sources  
This information not field checked. Map edited 1985



REDLAND, OREG.  
SW/4 SANDY 15' QUADRANGLE  
45122-C4-TF-024

1961  
PHOTOREVISED 1985  
DMA 1574 IV SW-SERIES V892

COLTON 1:62,500