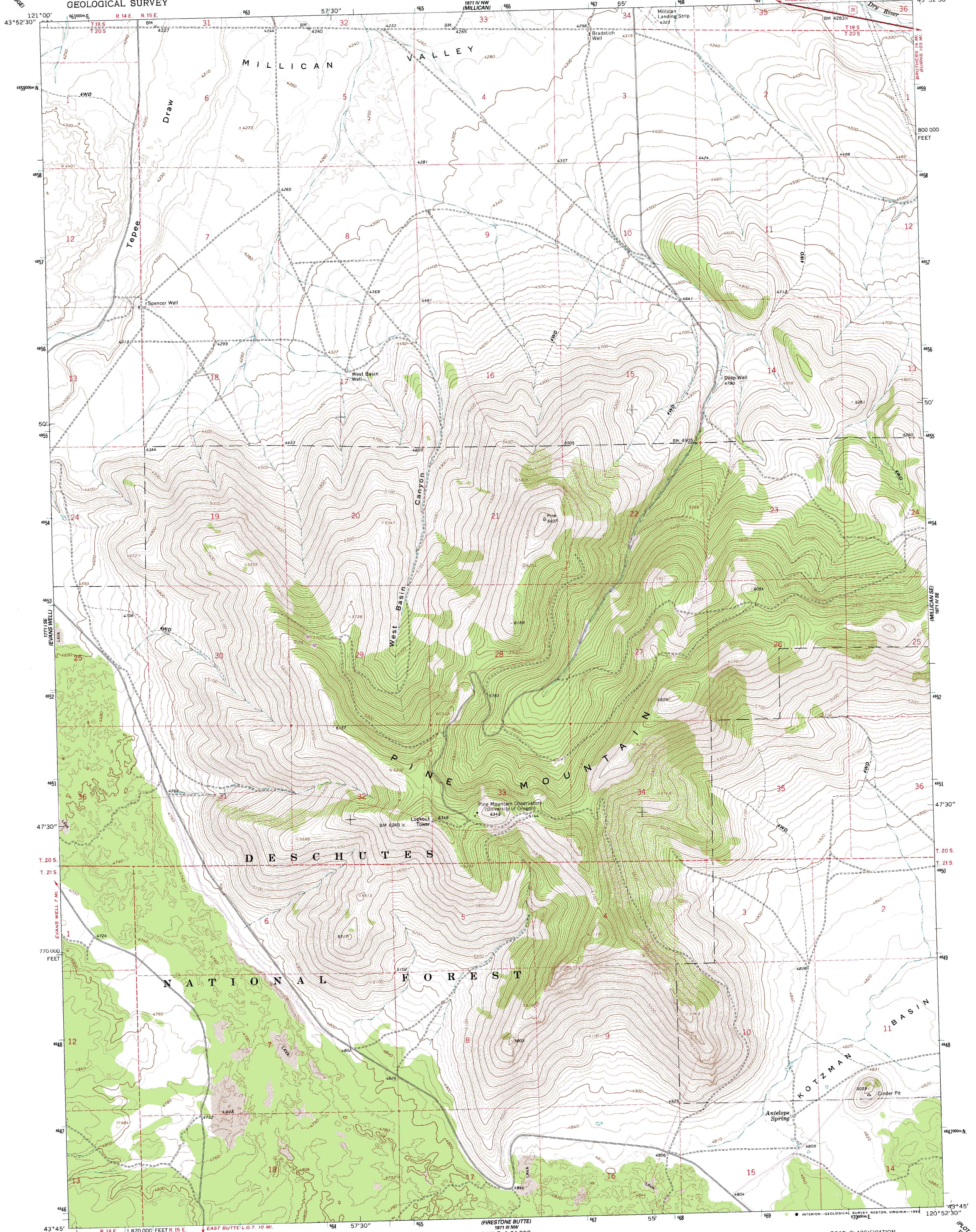


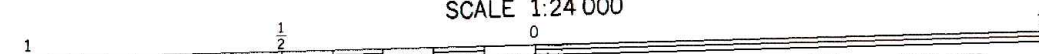
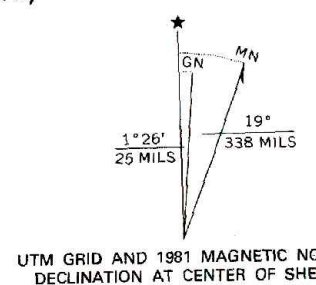
UNITED STATES
DEPARTMENT OF THE INTERIOR
GEOLOGICAL SURVEY

PINE MOUNTAIN QUADRANGLE
OREGON—DESCHUTES CO.
7.5 MINUTE SERIES (TOPOGRAPHIC)



Mapped, edited, and published by the Geological Survey

Control by USGS, NOS/NOAA and U.S. Forest Service
Topography by photogrammetric methods from aerial photographs taken 1963. Field checked 1967.
Polyconic projection. 1927 North American Datum
10,000-foot grid based on Oregon coordinate system, south zone. 1000-meter Universal Transverse Mercator grid ticks, zone 10, shown in blue
The difference between 1927 North American Datum and North American Datum of 1983 (NAD 83) for 7.5 minute intersections is given in USGS Bulletin 1875. The NAD 83 is shown by dashed corner ticks
Fine red dashed lines indicate selected fence lines
There may be private inholdings within the boundaries of the National or State reservations shown on this map



CONTOUR INTERVAL 20 FEET
DOTTED LINES REPRESENT 10-FOOT CONTOURS
NATIONAL GEODETIC VERTICAL DATUM OF 1929

THIS MAP COMPLIES WITH NATIONAL MAP ACCURACY STANDARDS
FOR SALE BY U.S. GEOLOGICAL SURVEY
DENVER, COLORADO 80225, OR RESTON, VIRGINIA 22092
A FOLDER DESCRIBING TOPOGRAPHIC MAPS AND SYMBOLS IS AVAILABLE ON REQUEST



ROAD CLASSIFICATION
Heavy-duty ——— Light-duty ———
Unimproved dirt = = = = =
U.S. Route

PINE MOUNTAIN, OREG.
43120-G8-TF-024

Revisions shown in purple compiled by the U.S. Forest Service from aerial photographs taken 1979 and other source data. This information not field checked. Map edited 1981

1967
PHOTOREVISED 1981
DMA 1871 IV SW—SERIES V892