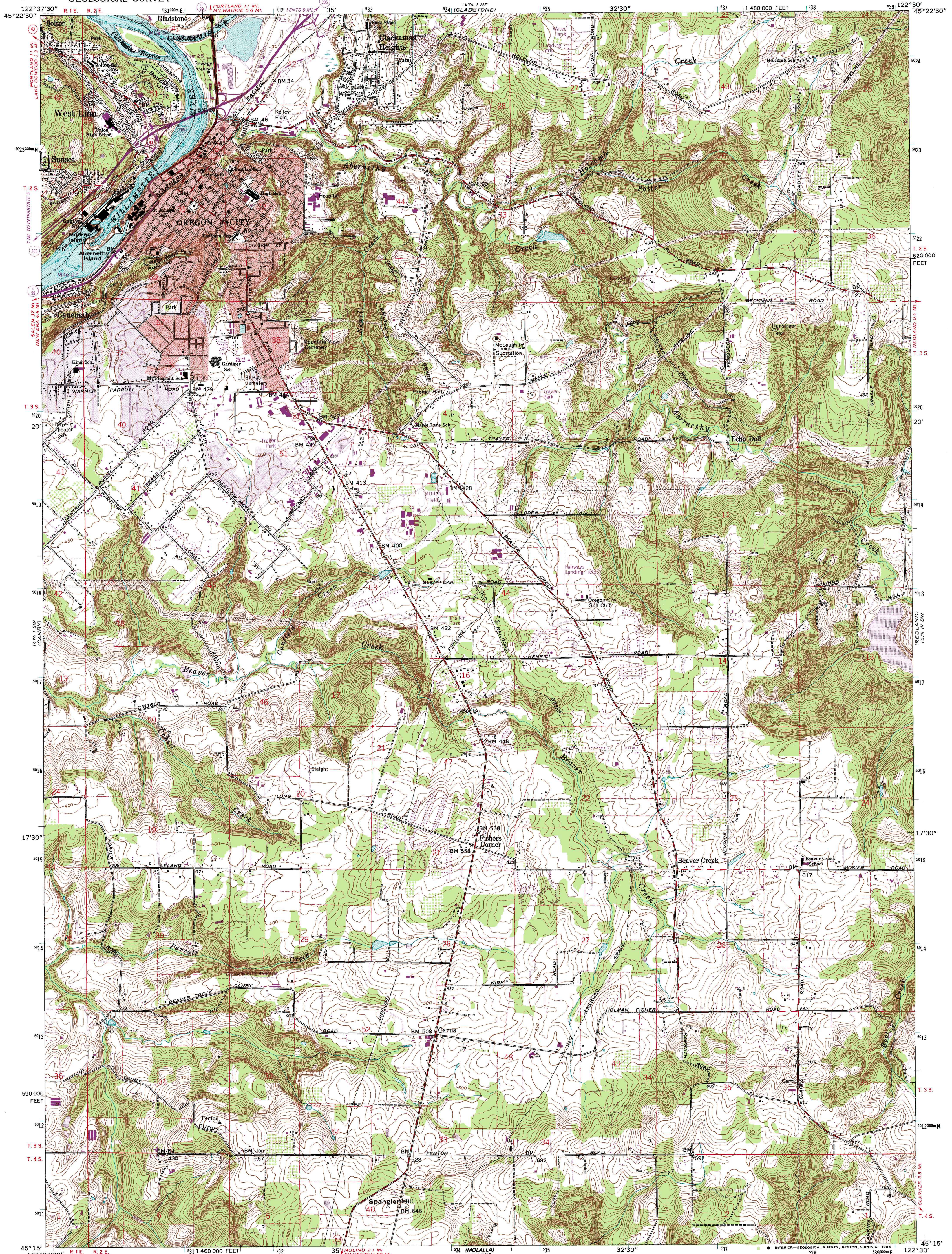


UNITED STATES
DEPARTMENT OF THE INTERIOR
GEOLOGICAL SURVEY

OREGON CITY QUADRANGLE
OREGON—CLACKAMAS CO.
7.5 MINUTE SERIES (TOPOGRAPHIC)
SE/4 OREGON CITY 15' QUADRANGLE



Mapped, edited, and published by the Geological Survey

Control by USGS and NOS/NOAA, USCE, and State of Oregon

Topography from aerial photographs by photogrammetric methods

Aerial photographs taken 1952. Field check 1954

Revised from aerial photographs taken 1960. Field check 1961

Selected hydrographic data compiled from NOS/NOAA Chart 6171 (1958)

This information is not intended for navigational purposes

Polycyclic projection. 1927 North American datum

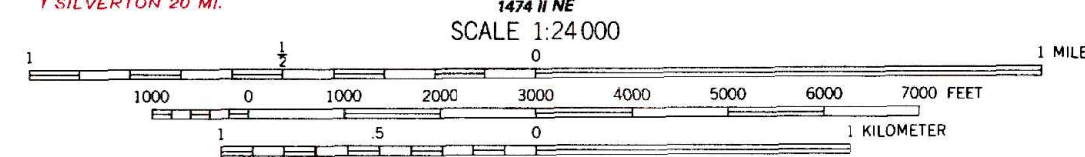
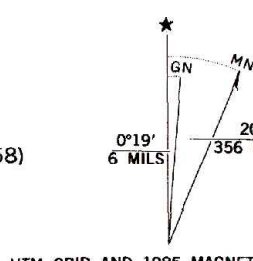
10,000-foot grid based on Oregon coordinate system, north zone

1000-meter Universal Transverse Mercator grid ticks, zone 10, shown in blue

To place on the predicted North American Datum 1983, move the projection lines 22 meters north and 94 meters east as shown by dashed corner ticks

Red tint indicates area in which only landmark buildings are shown

Fine red dashed lines indicate selected fence lines



CONTOUR INTERVAL 10 FEET
NATIONAL GEODETIC VERTICAL DATUM OF 1929
DEPTH CURVES AND SOUNDINGS IN FEET—DATUM IS MEAN LOWER LOW WATER BELOW LOCKS AND IS 50 FEET ABOVE MEAN SEA LEVEL ABOVE LOCKS (COLUMBIA RIVER AND WILLAMETTE RIVER DATA)
SHORELINE SHOWN REPRESENTS THE APPROXIMATE LINE OF MEAN HIGH WATER
THE MEAN RANGE OF TIDE IS APPROXIMATELY 2 FEET

THIS MAP COMPLIES WITH NATIONAL MAP ACCURACY STANDARDS
FOR SALE BY U. S. GEOLOGICAL SURVEY, DENVER, COLORADO 80225, OR RESTON, VIRGINIA 22092
A FOLDER DESCRIBING TOPOGRAPHIC MAPS AND SYMBOLS IS AVAILABLE ON REQUEST



ROAD CLASSIFICATION

Heavy-duty	Light-duty
Medium-duty	Unimproved dirt
U. S. Route	State Route
	Interstate Route

OREGON CITY, OREG.
SE/4 OREGON CITY 15' QUADRANGLE
45122-C5-TF-024

1961
PHOTOREVISED 1985
DMA 1474 1 SE-SERIES '78'

Revisions shown in purple compiled from aerial photographs taken 1981 and other sources
This information not field checked. Map edited 1985
Purple tint indicates extension of urban area