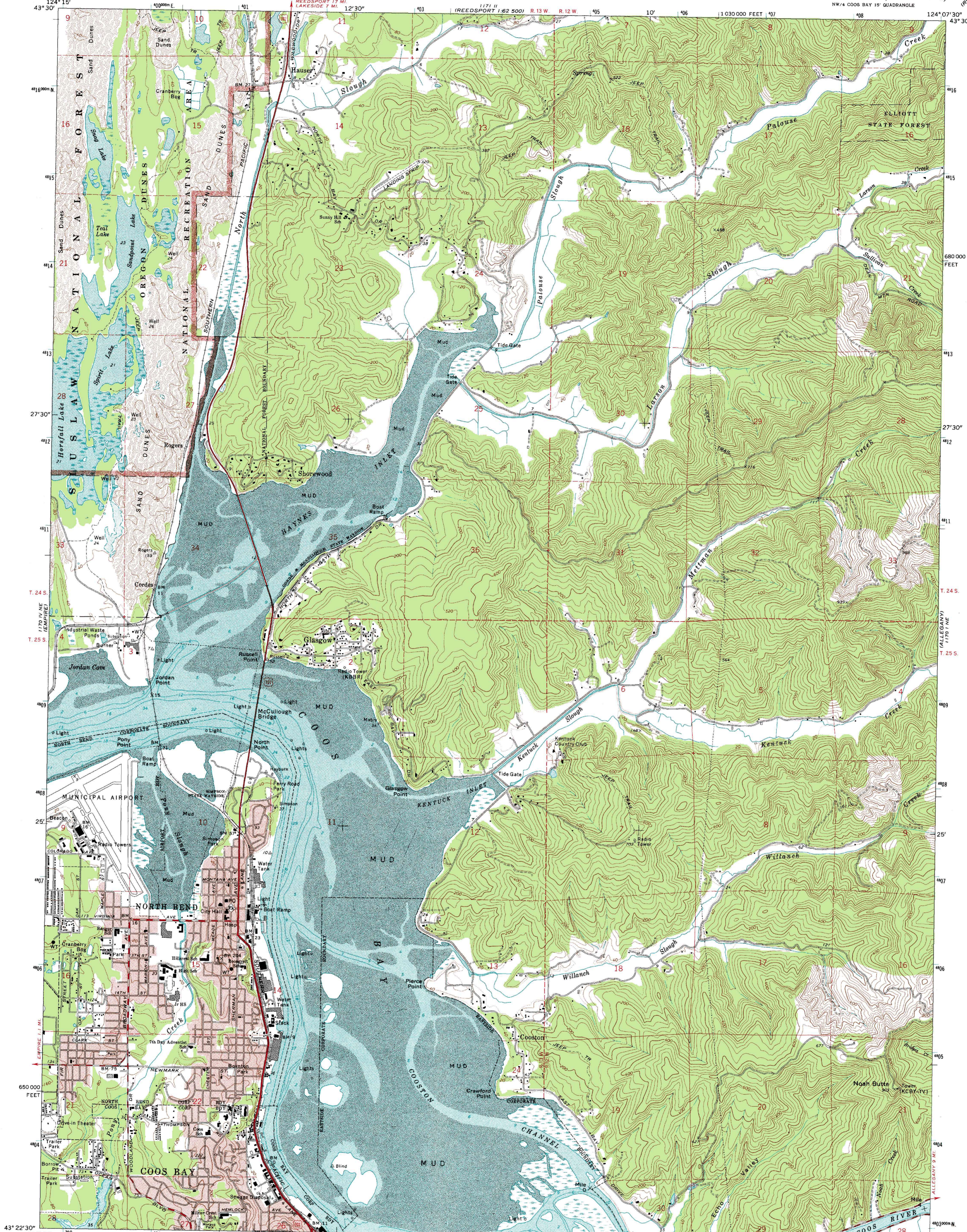


1171 II  
REEDSPORT 1:62 500'



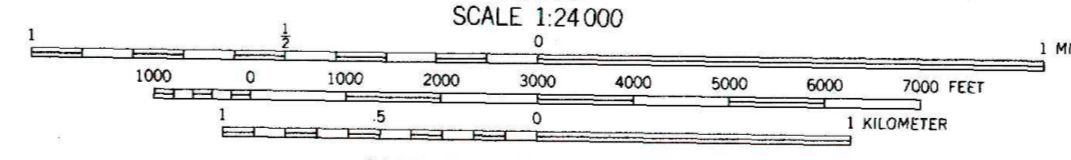
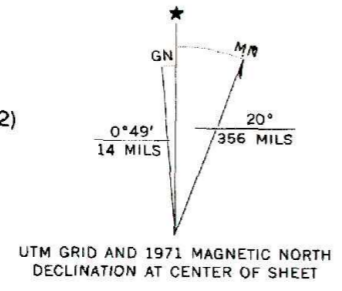
Mapped, edited, and published by the Geological Survey  
Control by USGS and USC&GS

Topography by photogrammetric methods from aerial  
photographs taken 1969-70. Field checked 1971

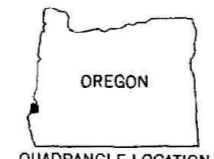
Selected hydrographic data compiled from USC&GS Chart 5984 (1972)  
This information is not intended for navigational purposes

Projection and 10,000-foot grid ticks: Oregon coordinate  
system, south zone (Lambert conformal conic)  
1000-meter Universal Transverse Mercator grid ticks,  
zone 10, shown in blue. 1927 North American datum

Red tint indicates areas in which only landmark buildings are shown  
Areas covered by dashed light-blue pattern  
are subject to controlled inundation



CONTOUR INTERVAL 40 FEET  
DOTTED LINES REPRESENT 20-FOOT CONTOURS  
DATUM IS MEAN SEA LEVEL  
DEPTH CURVES AND SOUNDINGS IN FEET—DATUM IS MEAN LOWER LOW WATER  
SHORELINE SHOWN REPRESENTS THE APPROXIMATE LINE OF MEAN HIGH WATER  
THE MEAN RANGE OF TIDE IS APPROXIMATELY 6 FEET



ROAD CLASSIFICATION

Primary highway, hard surface	Light-duty road, hard or improved surface
Secondary highway, hard surface	Unimproved road
Interstate Route	U. S. Route
	State Route

NORTH BEND, OREG.  
NW/4 COOS BAY 15' QUADRANGLE  
N4322.5—W12407.5/7.5

1971

AMS 1170 I NW—SERIES V892

FOR SALE BY U.S. GEOLOGICAL SURVEY  
DENVER, COLORADO 80225, OR RESTON, VIRGINIA 22092  
A FOLDER DESCRIBING TOPOGRAPHIC MAPS AND SYMBOLS IS AVAILABLE ON REQUEST

1170 IV SE  
CHARLESTON

1170 I SE  
ALLEGANY