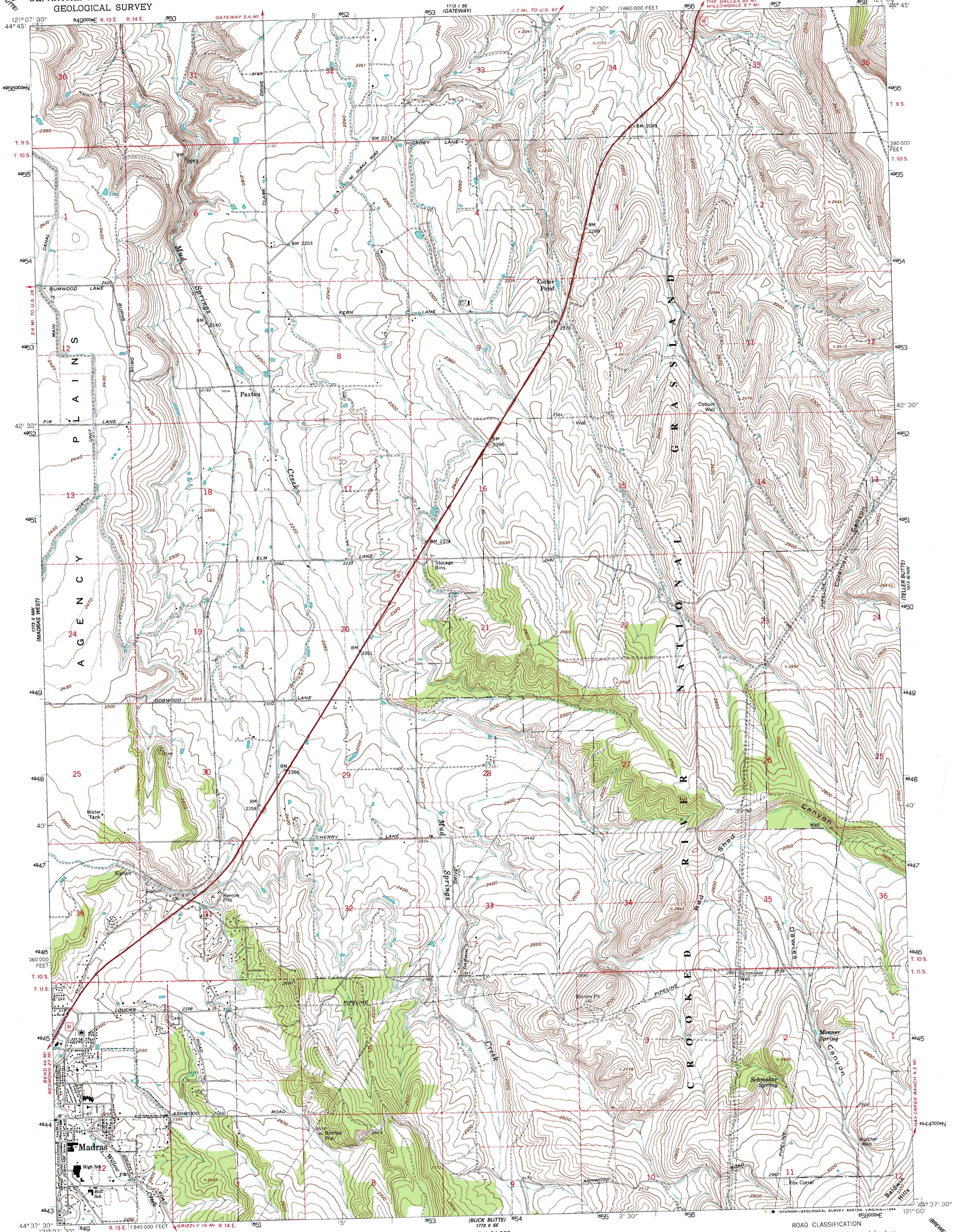


UNITED STATES
DEPARTMENT OF THE INTERIOR
GEOLOGICAL SURVEY

MADRAS EAST QUADRANGLE
OREGON—JEFFERSON CO.
7.5 MINUTE SERIES (TOPOGRAPHIC)



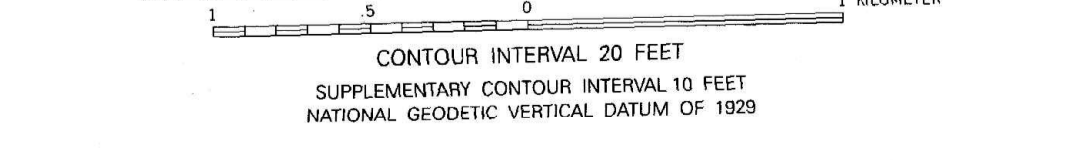
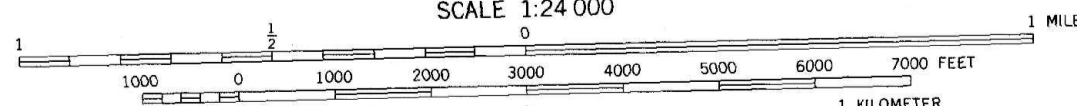
Produced by the United States Geological Survey
Revised in cooperation with U.S. Forest Service
Control by USGS and NOS/NOAA

Compiled from aerial photographs taken 1957 and from plane-table
surveys by U.S. Bureau of Reclamation. Field checked by
USGS 1963. Revised from aerial photographs taken 1982
Limited field check 1985. Map edited 1985

North American Datum of 1927 (NAD 27). Projection and
10000-foot ticks: Oregon Coordinate System, north zone
(Lambert Conformal Conic)

Blue 1000-meter Universal Transverse Mercator ticks, zone 10
North American Datum of 1983 (NAD 83) is shown by dashed
corner ticks. The values of the shift between NAD 27 and NAD 83
for 7.5-minute intersections are obtainable from National Geodetic
Survey NADCON software

There may be private inholdings within the boundaries of the
National or State reservations shown on this map
Fine red dashed lines indicate selected fence lines



THIS MAP COMPLIES WITH NATIONAL MAP ACCURACY STANDARDS
FOR SALE BY U.S. GEOLOGICAL SURVEY
DENVER, COLORADO 80225, OR RESTON, VIRGINIA 22092
A FOLDER DESCRIBING TOPOGRAPHIC MAPS AND SYMBOLS IS AVAILABLE ON REQUEST



ROAD CLASSIFICATION

| | |
|---------------------------------|---|
| Primary highway, hard surface | Light-duty road, hard or improved surface |
| Secondary highway, hard surface | Unimproved road |
| Interstate Route | U.S. Route |
| | State Route |

MADRAS EAST, OREG.
44121 F1 TF 024

1985
MINOR REVISION 1993
DMA 1773 II NE—SERIES V892

Photoinspected from 1990 source; no major culture or drainage changes observed. Boundaries verified and names revised 1993