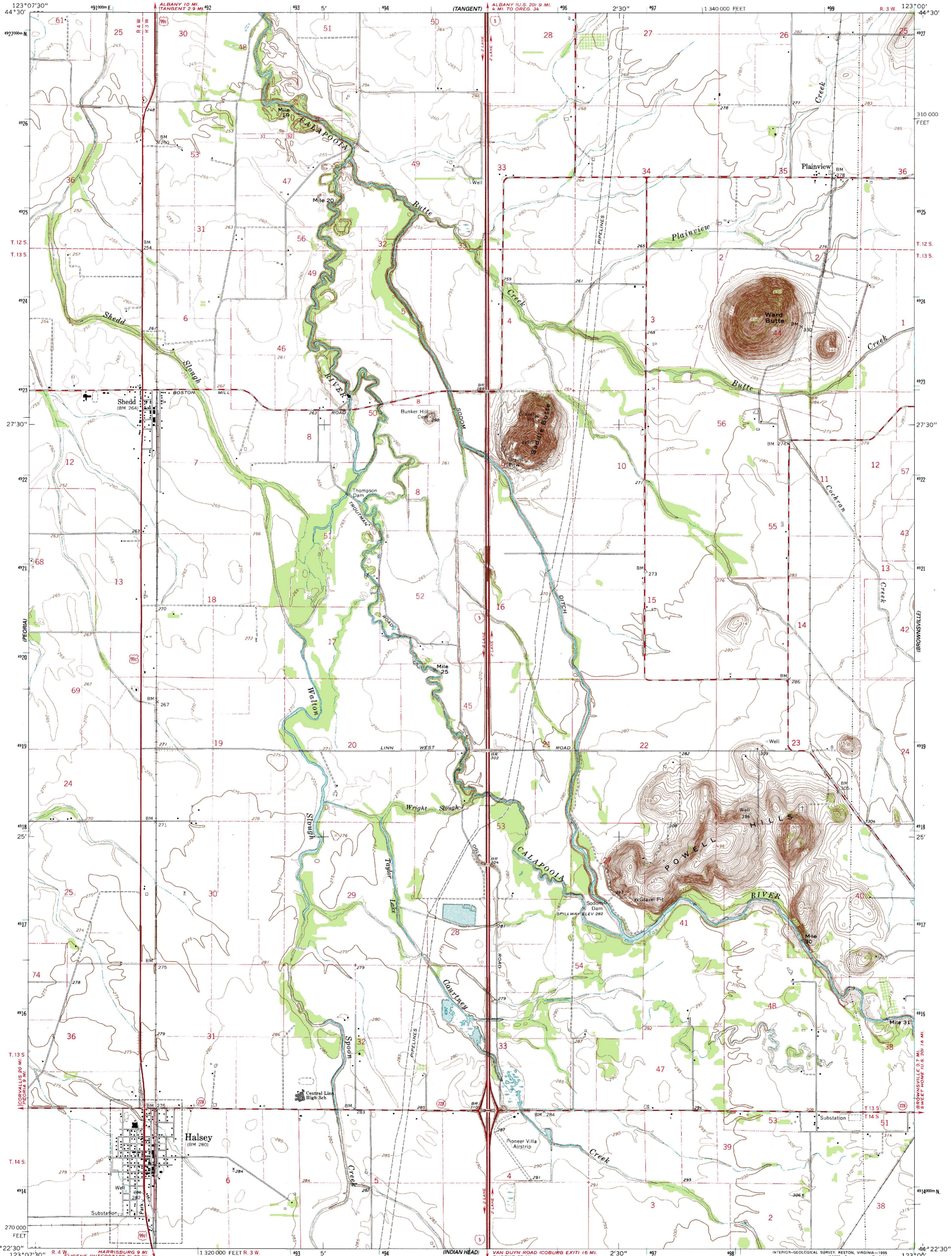
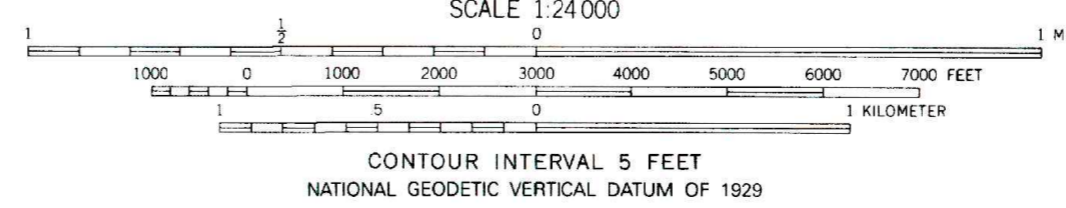
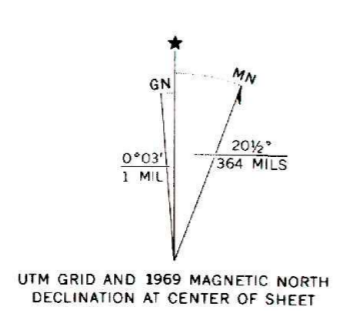


(HARRISBERG)

(LEBANON)



Produced by the United States Geological Survey
 Control by USGS, NOS/NOAA, and State of Oregon
 Compiled from aerial photographs taken 1967. Field checked 1969
 North American Datum of 1927 (NAD 27). Projection and
 10,000-foot ticks: Oregon Coordinate System, north zone
 (Lambert Conformal Conic)
 Blue 1000-meter Universal Transverse Mercator ticks, zone 10
 North American Datum of 1983 (NAD 83) is shown by dashed
 corner ticks. The values of the shift between NAD 27 and NAD 83
 for 7.5-minute intersections are obtainable from National Geodetic
 Survey NADCON software
 Fine red dashed lines indicate selected fence lines



ROAD CLASSIFICATION

Primary highway hard surface	Light-duty road improved surface
Secondary highway hard surface	Unimproved road weather
Interstate Route	U. S. Route
	State Route

CONTOUR INTERVAL 5 FEET
 NATIONAL GEODETIC VERTICAL DATUM OF 1929

THIS MAP COMPLIES WITH NATIONAL MAP ACCURACY STANDARDS
 FOR SALE BY U.S. GEOLOGICAL SURVEY
 DENVER, COLORADO 80225, OR RESTON, VIRGINIA 22092
 A FOLDER DESCRIBING TOPOGRAPHIC MAPS AND SYMBOLS IS AVAILABLE ON REQUEST

HALSEY, OR
 44123-D1-TF-024
 1969