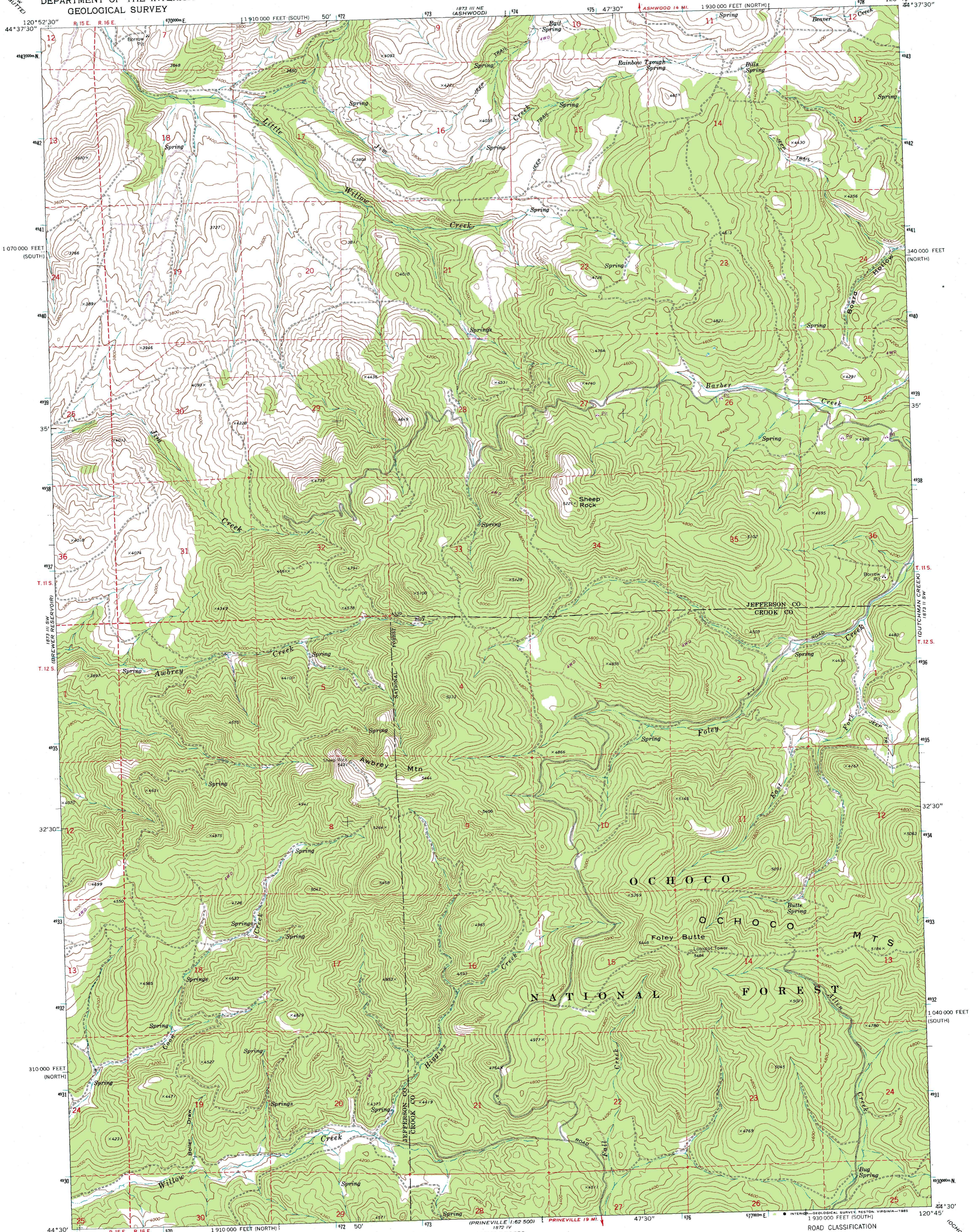


UNITED STATES  
DEPARTMENT OF THE INTERIOR  
GEOLOGICAL SURVEY

FOLEY BUTTE QUADRANGLE  
OREGON  
7.5 MINUTE SERIES (TOPOGRAPHIC)



Mapped, edited, and published by the Geological Survey  
Control by USGS and NOS/NOAA

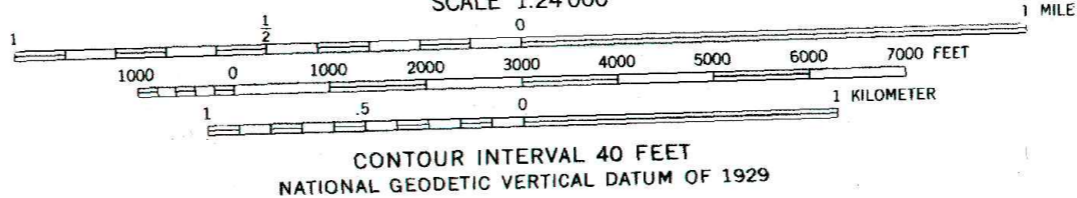
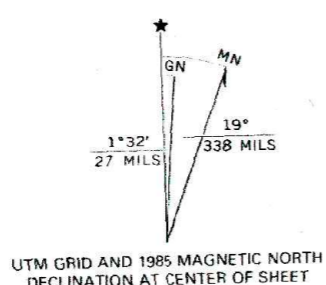
Topography by photogrammetric methods from aerial  
photographs taken 1967. Field checked 1969

Polyconic projection. 1927 North American datum  
10,000-foot grids based on Oregon coordinate system,  
north and south zones

1000-meter Universal Transverse Mercator grid ticks,  
zone 10, shown in blue

To place on the predicted North American Datum 1983  
move the projection lines 20 meters north and  
90 meters east as shown by dashed corner ticks

Fine red dashed lines indicate selected fence lines  
There may be private inholdings within the boundaries of  
the National or State reservations shown on this map.



ROAD CLASSIFICATION

|                                    |  |
|------------------------------------|--|
| Primary highway,<br>hard surface   | Light-duty road, hard or<br>improved surface |
| Secondary highway,<br>hard surface | Unimproved road                              |
| Interstate Route                   | U. S. Route                                  |
|                                    | State Route                                  |

THIS MAP COMPLIES WITH NATIONAL MAP ACCURACY STANDARDS  
FOR SALE BY U. S. GEOLOGICAL SURVEY, DENVER, COLORADO 80225, OR RESTON, VIRGINIA 22092  
A FOLDER DESCRIBING TOPOGRAPHIC MAPS AND SYMBOLS IS AVAILABLE ON REQUEST

Revision shown in purple compiled by Geological Survey  
from aerial photographs taken 1982. Partial field check by  
U. S. Forest Service. Map edited 1985

FOLEY BUTTE, OREG.  
44120-E7-TF-024

1969  
PHOTOREVISED 1985  
DMA 1873 III SE-SERIES V892