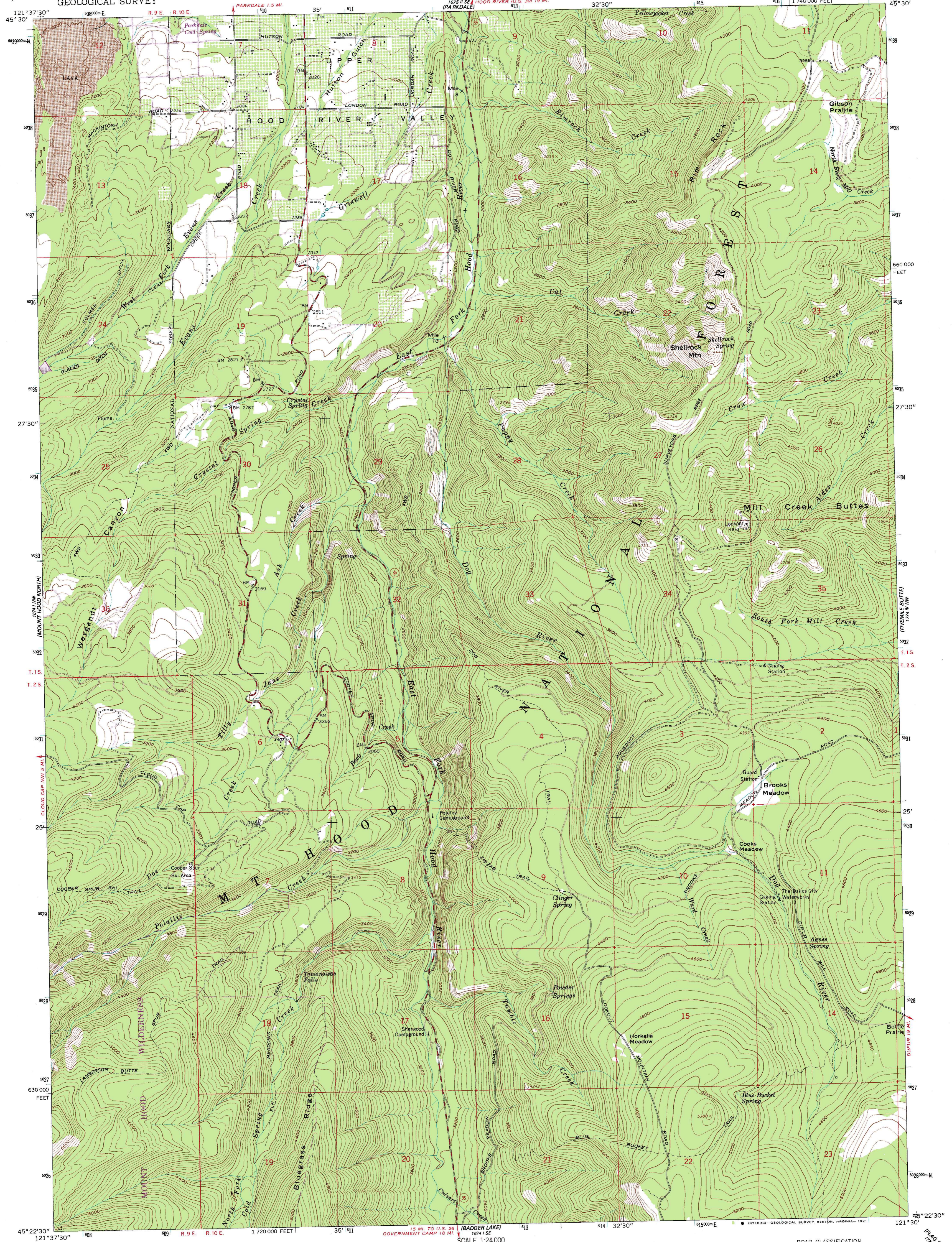
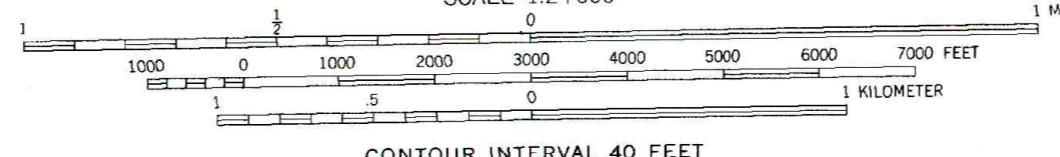
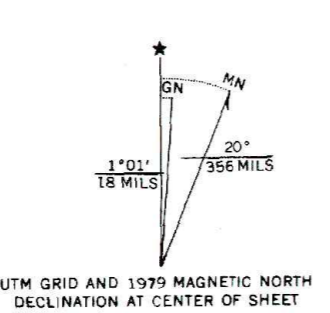


UNITED STATES
DEPARTMENT OF THE INTERIOR
GEOLOGICAL SURVEY

DOG RIVER QUADRANGLE
OREGON—HOOD RIVER CO.
7.5 MINUTE SERIES (TOPOGRAPHIC)



Mapped, edited, and published by the Geological Survey
Control by USGS and NOS/NOAA
Topography by photogrammetric methods from aerial photographs taken 1966. Field checked 1962
Polyconic projection. 1927 North American Datum
10,000-foot grid based on Oregon coordinate system, north zone 1000-meter Universal Transverse Mercator grid ticks, zone 10 shown in blue
The difference between 1927 North American Datum and North American Datum of 1983 (NAD 83) for 7.5 minute intersections is given in blue
The NAD 83 is shown by dashed corner ticks
There may be private inholdings within the boundaries of the National or State reservations shown on this map



ROAD CLASSIFICATION

Heavy-duty	Light-duty
Medium-duty	Unimproved dirt

State Route

DOG RIVER, OREG.
45121-D5-TF-024

1962
PHOTOREVISED 1979
DMA 1674 1E—SERIES V892

FOR SALE BY U.S. GEOLOGICAL SURVEY, DENVER, COLORADO 80225, OR RESTON, VIRGINIA 22092
A FOLDER DESCRIBING TOPOGRAPHIC MAPS AND SYMBOLS IS AVAILABLE ON REQUEST

Revisions shown in purple compiled by the U.S. Forest Service from aerial photographs taken 1974 and other source data. This information not field checked. Map edited by the Geological Survey 1979.