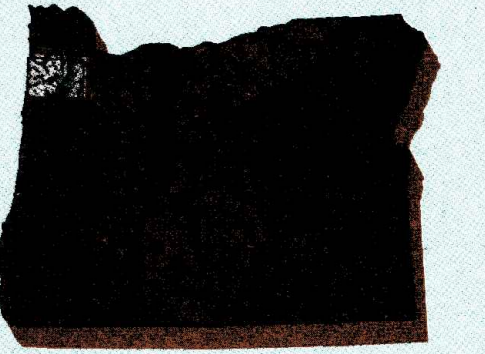


# Yamhill River

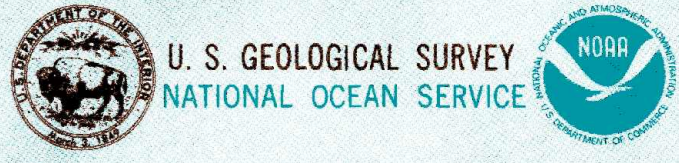
## OREGON

1:100 000-scale metric  
topographic-bathymetric map



30 X 60 MINUTE QUADRANGLE  
SHOWING

- Contours and elevations in meters
- Highways, roads and other manmade structures
- Water features
- Woodland areas
- Geographic names
- Bathymetric contours in meters



1980

Produced by the Geological Survey and the National Ocean Service

Compiled from USGS 1:24 000 and 1:62 500-scale topographic maps dated 1955-1979 and from advance materials

Bathymetry compiled by the National Ocean Service from tide-coordinated hydrographic surveys. This information is not intended for navigational purposes

Mean lower low water (dotted line) and mean high water (heavy solid line) compiled by NOS from tide-coordinated aerial photographs. Apparent shoreline (outer edge of vegetation) shown by light solid line

Projection and 10 000-meter grid, zone 10: Universal Transverse Mercator 23 800-foot grid ticks based on Oregon coordinate system, north zone 1927 North American Datum

To place on the projected North American Datum 1983 move the projection lines 23 meters north and 96 meters east

Limited revision and bathymetry added 1987

There may be private holdings within the boundaries of National or State reservations shown on this map

CONTOUR INTERVAL 50 METERS  
SUPPLEMENTARY CONTOUR INTERVAL 10 METERS

NATIONAL GEODETIC MERCATOR DATUM OF 1983  
ELEVATIONS SHOWN TO THE NEAREST METER  
BATHYMETRIC CONTOUR INTERVAL 10 METERS TO MAXIMUM DEPTH, WITH SUPPLEMENTARY 2 METER CONTOURS DEEPER THAN MEAN LOWER LOW WATER

THE RELATIONSHIP BETWEEN THE TWO DATUMS IS VARIABLE  
BATHYMETRIC SURVEY DATA COMPLETES WITH INTERNATIONAL HYDROGRAPHIC ORGANIZATION (IHO) OFFICIAL PUBLICATION 44 ACCURACY STANDARDS AND/OR STANDARDS USED AS OF THE DATE OF THE SURVEY

TO CONVERT METERS TO FEET  
MULTIPLY BY 3.28084  
TO CONVERT FEET TO METERS  
MULTIPLY BY 0.3048

METERS	FEET
1	3.28084
2	6.56168
3	9.84252
4	13.12336
5	16.40420
6	19.68504
7	22.96588
8	26.24672
9	29.52756
10	32.80840



ADJOINING MAPS

	1	2	3
1	1	2	3
2	4	5	6
3	7	8	9

1 Nehalem River  
2 Vancouver  
3 Vancouver

4 Oregon City  
5 Newport  
6 Corvallis  
7 North Santiam River

ISBN 0-607-00958-1  
9 780607 009581

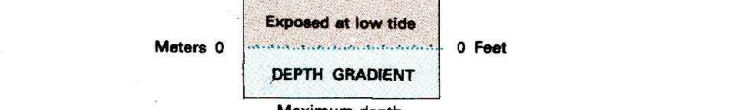
### Topographic Map Symbols

- Primary highway, hard surface
- Secondary highway, hard surface
- Light duty road, principal street, hard or improved surface
- Other road or street, trail
- Route marker: Interstate, U.S., State
- Railroad: standard gage; narrow gage
- Bridge: overpass; underpass
- Tunnel: road, railroad
- Built up area: locality, elevation
- Airport: landing field, landing strip
- National boundary
- State boundary
- County boundary
- National or State reservation boundary
- Land grant boundary
- U.S. public lands survey: range, township, section
- Range township section untraversed
- Power transmission line: pipeline
- Dam: dam with lock
- Cemetery: building
- Windmill; water well; spring
- Mine shaft: adit or open mine; quarry; gravel pit
- Compendium: picnic area; U.S. location monument
- Ruins; cliff dwelling
- Distorted surface: strip mine; lava; sand
- Contours: index; intermediate; supplementary
- Bathymetric contours: index; intermediate
- Stream, lake: perennial; intermittent
- Rapids, large and small; falls, large and small
- Area to be submerged: marsh, swamp
- Land subject to controlled inundation, woodland
- Creek, reservoir
- Orchard; vineyard

A pamphlet describing topographic maps is available on request

YAMHILL RIVER, OREGON  
45123-A1-TB-100  
1980  
BATHYMETRY ADDED 1987

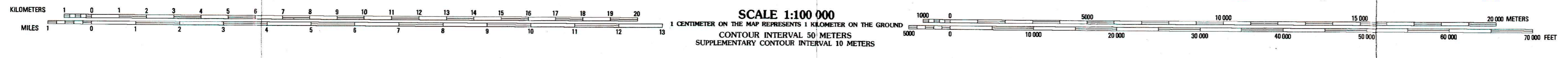
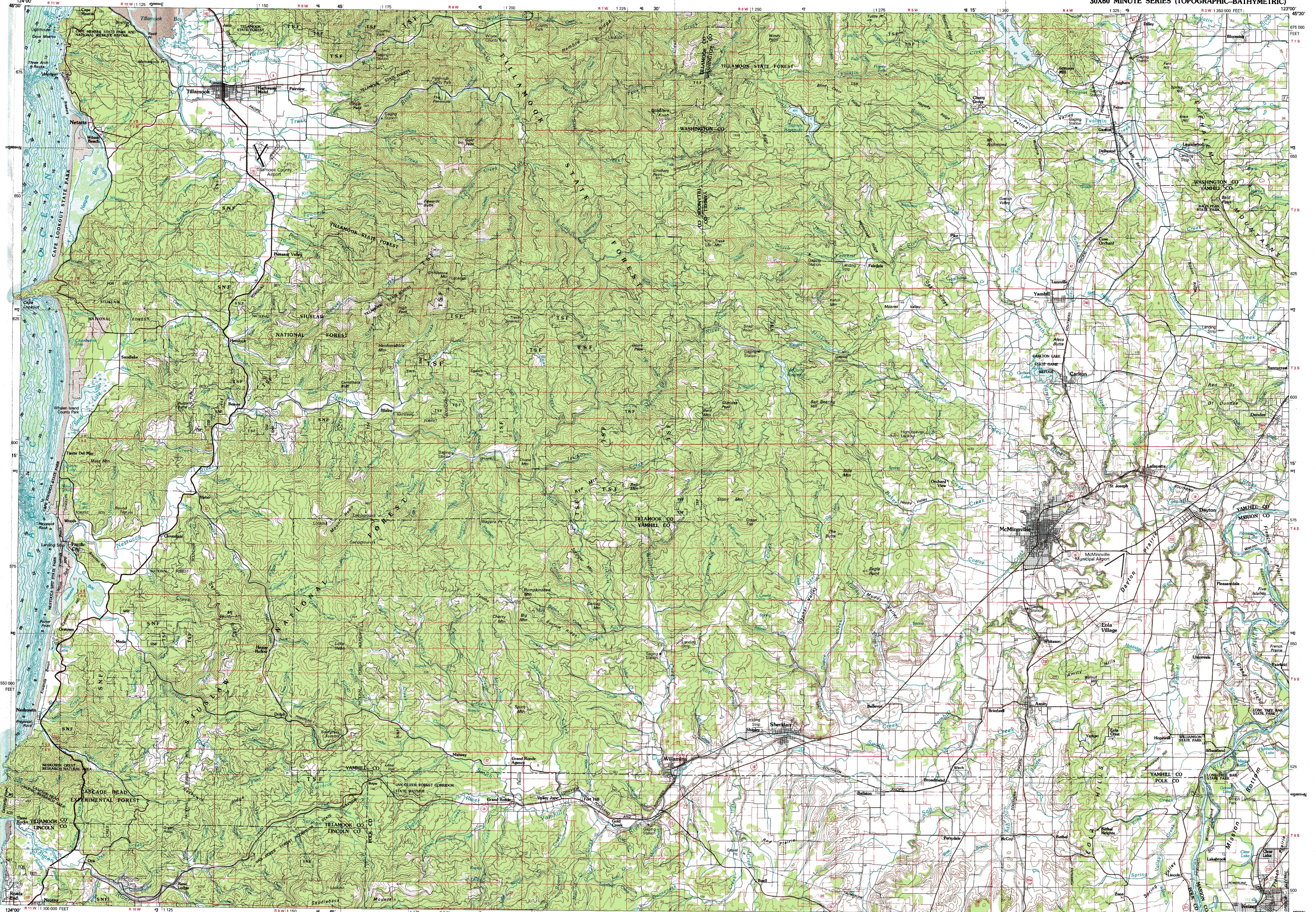
Exposed at low tide  
DEPTH GRADIENT  
Maximum depth



HYDROGRAPHIC SURVEY INDEX
H-4370
H-4371
H-4372
H-4373
H-4374
H-4375
H-4376
H-4377

HYDROGRAPHIC SURVEY INFORMATION			
SURVEY NUMBER	SURVEY DATE	SURVEY SCALE	LINE SPACING (FOOT, METERS)
H-4340	1971	1:20,000	60-20
H-4348	1971	1:20,000	10-30
H-4350	1971	1:20,000	60-14
H-4372	1987	1:100,000	60-16

FOR SALE BY U.S. GEOLOGICAL SURVEY  
DENVER, COLORADO 80225, OR RESTON, VIRGINIA 22092  
AND NATIONAL OCEAN SERVICE, ROCKVILLE, MARYLAND 20852



HYDROGRAPHIC SURVEY INFORMATION			
SURVEY NUMBER	SURVEY DATE	SURVEY SCALE	LINE SPACING (FOOT, METERS)
H-4340	1971	1:20,000	60-20
H-4348	1971	1:20,000	10-30
H-4350	1971	1:20,000	60-14
H-4372	1987	1:100,000	60-16