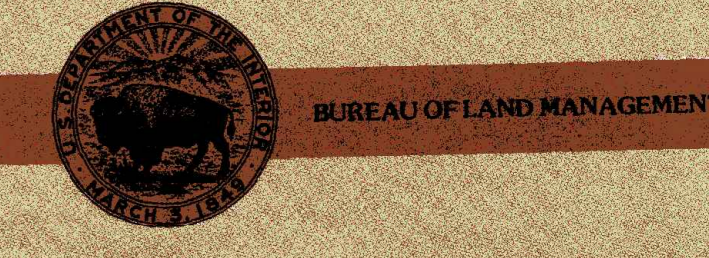




- 30 X 60 MINUTE QUADRANGLE
 SHOWING
- Contours and elevations in meters
 - Highways, roads and other manmade structures
 - Water features
 - Geographic names



Edited and published by the Bureau of Land Management
 Base map prepared by the U.S. Geological Survey
 Compiled from USGS 1:62 500-scale topographic maps
 dated 1956-1960. Planimetry revised from aerial photographs
 taken 1975 and other source data. Revised information not
 field checked. Map edited 1980
 Projection and 10 000-meter grid, zone 10,
 Universal Transverse Mercator
 25 000-foot grid ticks based on Oregon coordinate system,
 south zone. 1927 North American Datum
 To place on the predicted North American Datum 1983
 move the projection lines 19 meters north and 92 meters east

CONTOUR INTERVAL: 40 METERS
 SUPPLEMENTARY CONTOUR INTERVAL: 10 METERS
 NATIONAL GEODETIC VERTICAL DATUM OF 1929

THIS MAP COMPLIES WITH NATIONAL MAP ACCURACY STANDARDS

CONVERSION TABLE		DECLINATION DIAGRAM		ADJOINING MAPS	
Meters	Feet	True	Magnetic	1	2
1	3.2808	115° 15'	115° 15'	1	2
2	6.5617	115° 15'	115° 15'	2	3
3	9.8425	115° 15'	115° 15'	3	4
4	13.1234	115° 15'	115° 15'	4	5
5	16.4042	115° 15'	115° 15'	5	6
6	19.6850	115° 15'	115° 15'	6	7
7	22.9659	115° 15'	115° 15'	7	8
8	26.2467	115° 15'	115° 15'		
9	29.5275	115° 15'	115° 15'		
10	32.8084	115° 15'	115° 15'		

To convert meters to feet multiply by 3.2808
 To convert feet to meters multiply by 0.3048

UTM grid convergence (100) and 1983 magnetic declination (10) at center of map
 Diagram is approximate

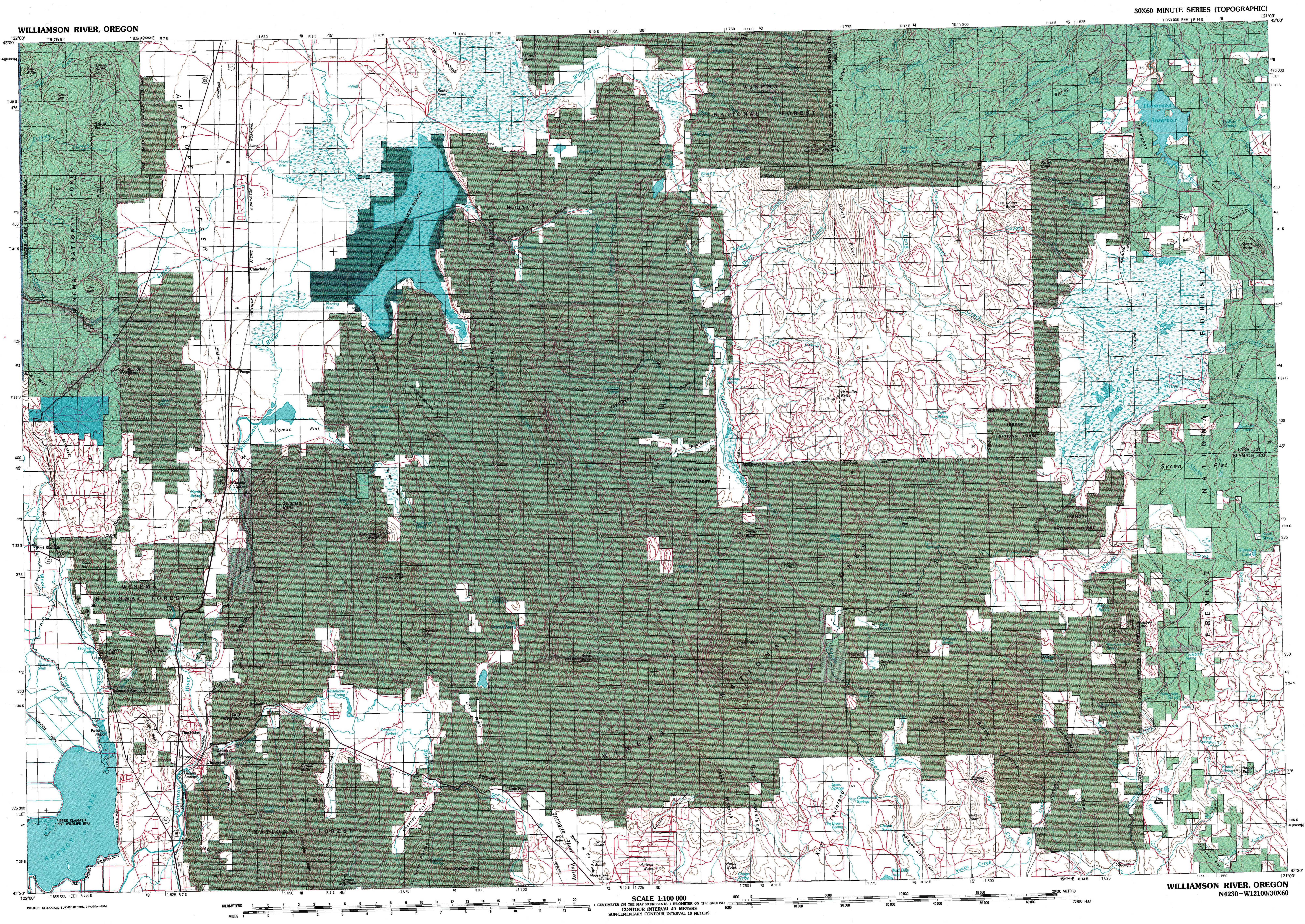
1 Diamond Lake
 2 Crescent
 3 Christmas Valley
 4 Crater Lake
 5 Lake Abert
 6 Madras
 7 Klamath Falls
 8 Lakeview

FOR SALE BY U.S. GEOLOGICAL SURVEY, DENVER, COLORADO 80225
 and
 BLM STATE OFFICE
 PORTLAND, OR 97208

Topographic Map Symbols

- Primary highway, hard surface
- Secondary highway, hard surface
- Light duty road, principal street, hard or improved surface
- Other road or street, road
- Railroad: standard gauge, narrow gauge
- Bridge, overpass, underpass
- Tunnel, road, railroad
- Built up areas, heavily developed
- Harbor, landing field, landing strip
- National boundary
- State boundary
- County boundary
- National or State reservation boundary
- Land grant boundary
- U. S. public lands survey: range, township, section
- Range, township; section line: protected
- Power transmission line: pipeline
- Dam: dam with lock
- Cemetery, building
- Windmill, water well, spring
- Mine shaft; adit or cave; mine, quarry; gravel pit
- Campground; picnic area; U. S. location monument
- Ruin; old dwelling
- Disturbed surface: strip mine, lava, sand
- Contours: index, intermediate, supplementary
- Bathymetric contours: index, intermediate
- Stream, lake: perennial; intermittent
- Rupee, dam and rock; rubble, large and small
- Area to be submerged: marsh, swamp
- Land subject to controlled inundation

NOTE TO MAP USERS
 The surface and interests management status designations are published as general planning and management aids. Some of the lands, surface and mineral rights, may have been shown as patented lands due to the lack of information available to BLM with respect to the status of acquisition. Tracts less than 40 acres are usually omitted because of the map scale. Access through private lands may be restricted. The official land records in the respective offices of the Bureau of Land Management or other responsible Federal agencies should be checked for specific status on any specific tract of land. Inquiries in the BLM maps should be reported to the respective Bureau of Land Management office from which the map was issued.



SCALE 1:100 000
 1 CENTIMETER ON THE MAP REPRESENTS 1 KILOMETER ON THE GROUND
 CONTOUR INTERVAL 40 METERS
 SUPPLEMENTARY CONTOUR INTERVAL 10 METERS

BUREAU OF LAND MANAGEMENT LAND STATUS LEGEND			
Public Lands (Administered By Bureau of Land Management)	NONE	National Parks and Monuments	Blue shaded area
Oregon & California Lands (O&C Lands)	NONE	Military Reservations and Withdrawals	Green shaded area
Cove Bay Wagon Road (CBWR)	NONE	Wildlife Refuges	Dark green shaded area
National Forest	Green shaded area	Bankhead-Jones Land Use Lands (L.U. Lands)	Blue shaded area
National Grasslands	NONE	Tennessee Valley Authority	NONE
		Patented Lands	White area
		State Lands	Blue shaded area
		Water and Power Resources Service	NONE
		Power Withdrawals and Classifications	NONE
		Federal Agency Protective Withdrawals	NONE
		Public Water Reserves	Blue shaded area
		Department of Energy (DOE)	NONE
		Oregon & California Lands (O&C Lands) Administered by US Forest Service	NONE
		Radio & Air Facilities	NONE
		Miscellaneous	NONE
		State, County, City, Wildlife, Park and Outdoor Recreation Areas	Blue shaded area
		Acquired Lands	NONE
		Administered by US Forest Service	NONE

WILLIAMSON RIVER, OREGON
 N4230-W12100/30X60