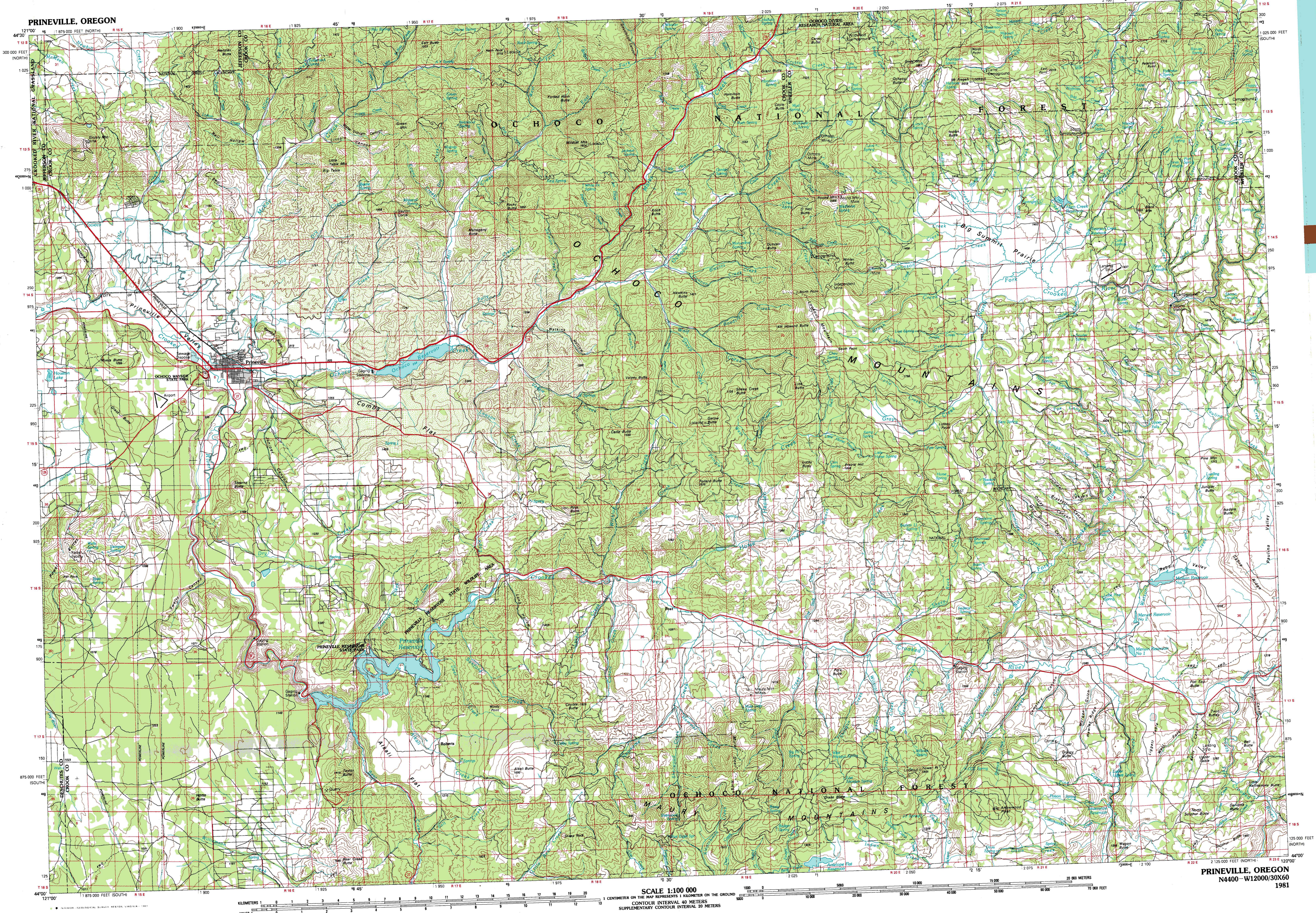
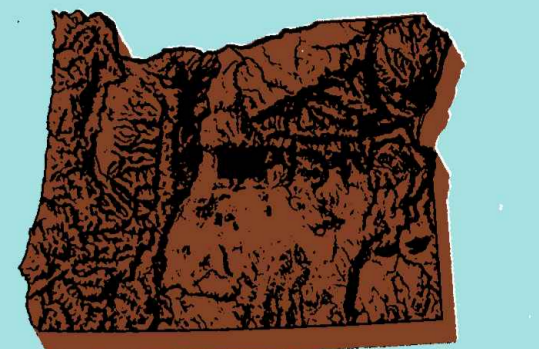


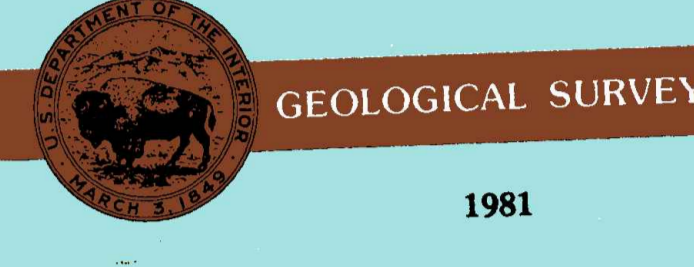
PRINEVILLE, OREGON



1:100 000-scale metric topographic map of Prineville OREGON



- 30 X 60 MINUTE QUADRANGLE SHOWING
- Contours and elevations in meters
 - Highways, roads and other manmade structures
 - Water features
 - Woodland areas
 - Geographic names



Produced by the United States Geological Survey
 Compiled from USGS 1:24 000 and 1:62 500-scale topographic maps dated 1946-1966 and maps in progress. Placenames revised from aerial photographs taken 1978 and other source data. Revised information in field checked. Map edited 1981.
 Projection and 10 000-meter grid, zone 10.
 Universal Transverse Mercator
 25 000-foot grid ticks based on Oregon coordinate system, south and north zones. 1927 North American Datum
 To place on the predicted North American Datum 1983 move the projection lines 20 meters north and 89 meters east
 There may be private inholdings within the boundaries of the National or State reservations shown on this map

CONTOUR INTERVAL 40 METERS
 SUPPLEMENTARY CONTOUR INTERVAL 20 METERS
 NATIONAL GEODETIC VERTICAL DATUM OF 1929

THIS MAP COMPLIES WITH NATIONAL MAP ACCURACY STANDARDS

CONVERSION TABLE		DECLINATION DIAGRAM		ADJOINING MAPS		
Meters	Feet	Magnetic Declination		1	2	3
1	3.2808	1981		4	5	
2	6.5617	1982		6	7	8
3	9.8425	1983				
4	13.1234	1984				
5	16.4042	1985				
6	19.6850	1986				
7	22.9659	1987				
8	26.2467	1988				
9	29.5275	1989				
10	32.8084	1990				

To convert meters to feet multiply by 3.2808
 To convert feet to meters multiply by 0.3048

UTM grid convergence (GTM and 1981 magnetic declination) at center of map
 Diagram is approximate

1 Madras
 2 Stephenson Mts.
 3 Madras
 4 Bend
 5 Dryden
 6 La Pine
 7 Brothers
 8 Burns

FOR SALE BY U. S. GEOLOGICAL SURVEY, DENVER, COLORADO 80225 OR RESTON, VIRGINIA 22092

Topographic Map Symbols

- Primary highway, hard surface
- Secondary highway, hard surface
- Light duty road, principal street, hard or improved surface
- Other road or street, dirt
- Road marker: interstate: U. S. State
- Railroad: standard gage; narrow gage
- Bridge: overpass; underpass
- Tunnel: road; railroad
- Built up area; locality; station
- Airport; landing field; landing strip
- National boundary
- State boundary
- County boundary
- National or State reservation boundary
- Land grant boundary
- U. S. public lands survey: range, township; section
- Range, township; section line: protected
- Power transmission line: pipeline
- Cemetery; building
- Dam; dam with lock
- Cemetery; building
- Well; water well; spring
- Mine shaft; adit or ore; mine, quarry; gravel pit
- Campground; picnic area; U. S. location monument
- Ruins; cliff dwelling
- Disturbed surface: strip mine, lava; sand
- Contours: index; intermediate; supplementary
- Bathymetric contours: index; intermediate
- Stream, lake, perennial; intermittent
- Rapids, falls and small; falls, large and small
- Area to be submerged; marsh, swamp
- Land subject to controlled inundation; woodland
- Scrub; mangrove
- Orchard; vineyard

A pamphlet describing topographic maps is available on request

SCALE 1:100 000
 1 CENTIMETER ON THE MAP REPRESENTS 1 KILOMETER ON THE GROUND
 CONTOUR INTERVAL 40 METERS
 SUPPLEMENTARY CONTOUR INTERVAL 20 METERS

PRINEVILLE, OREGON
 N4400-W12000/30X60
 1981