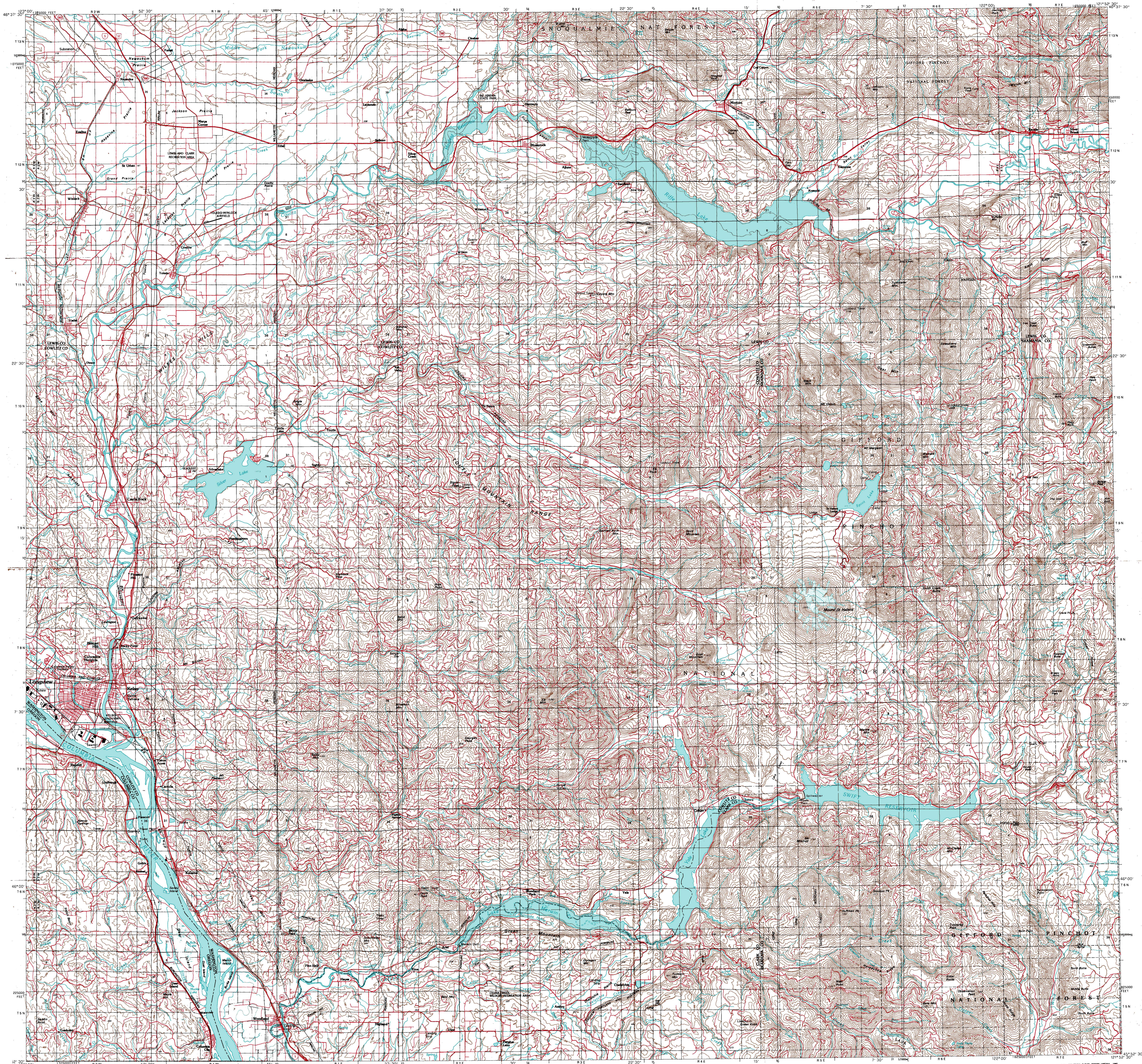
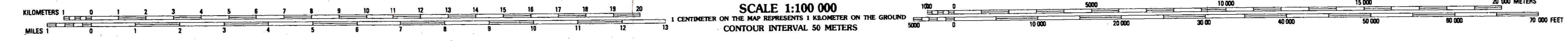


UNITED STATES DEPARTMENT OF THE INTERIOR—GEOLOGICAL SURVEY



Produced by the U.S. Geological Survey from 1:100 000-scale quadrangles
Projection and 10 000-meter grid, zone 10, Universal Transverse Mercator
25 000-foot grid ticks based on Washington coordinate system, south zone,
and Oregon coordinate system, north zone
Road update furnished by Washington State Department of Natural Resources



MOUNT ST. HELENS AND VICINITY, WASH.-OREG.
April 1980
SPECIAL EDITION