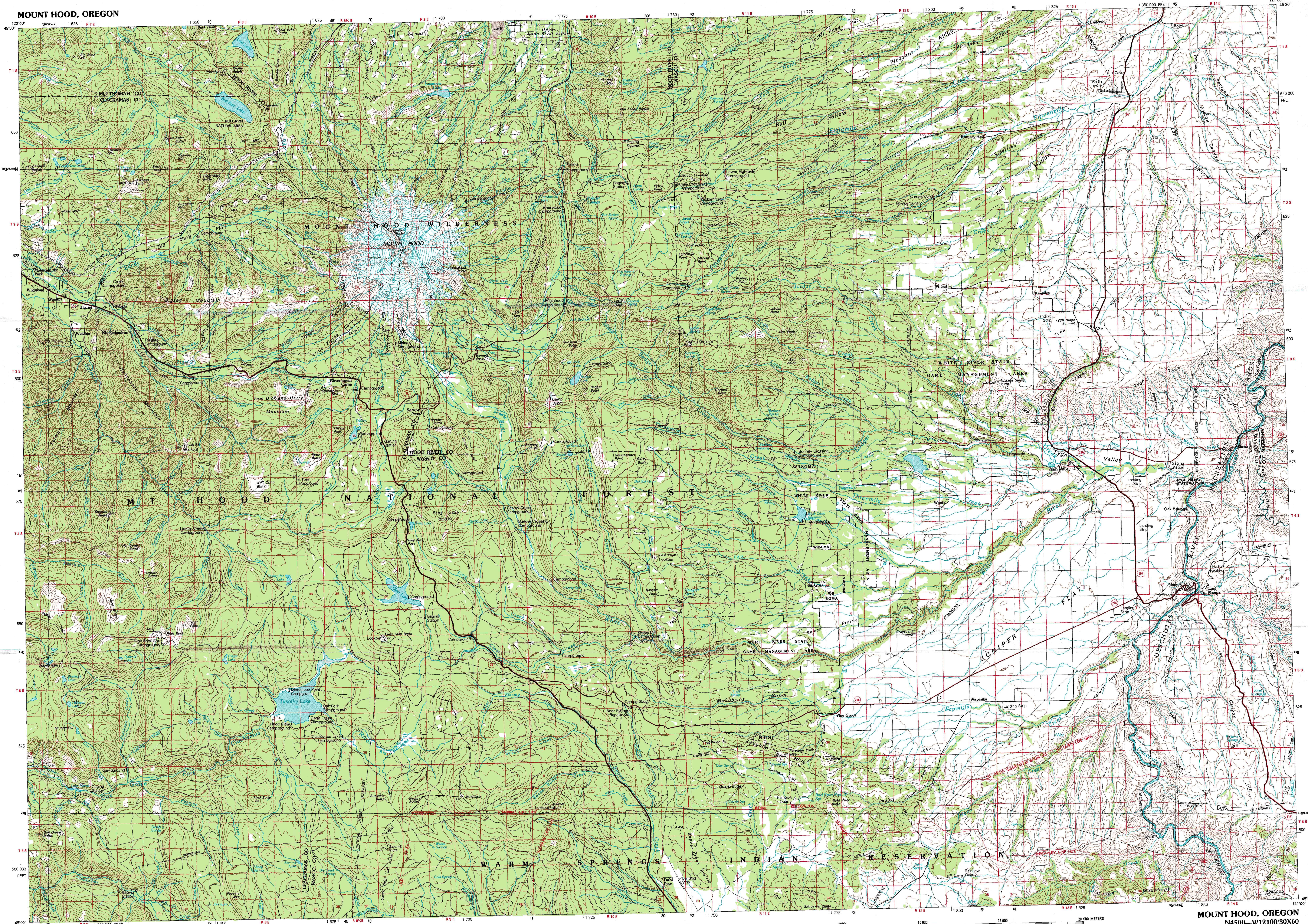


MOUNT HOOD, OREGON

30X60 MINUTE SERIES (TOPOGRAPHIC)



1:100 000-scale metric topographic map of Mount Hood OREGON



30 X 60 MINUTE QUADRANGLE SHOWING

- Contours and elevations in meters
- Highways, roads and other manmade structures
- Water features
- Woodland areas
- Geographic names

GEOLOGICAL SURVEY

1983

Produced by the United States Geological Survey  
 Compiled from USGS 1:24 000 and 1:62 500-scale topographic maps dated 1956-1980. Planimetry revised from aerial photographs taken 1981 and other source data. Revised information not field checked. Map edited 1983.  
 Projection and 10 000-meter grid, zone 10, Universal Transverse Mercator  
 25 000-foot grid ticks based on Oregon coordinate system, north zone, 1927 North American Datum  
 To place on the predicted North American Datum 1983 move the projection lines 21 meters north and 92 meters east  
 There may be private inholdings within the boundaries of the National or State reservations shown on this map

CONTOUR INTERVAL 50 METERS  
NATIONAL GEODETIC VERTICAL DATUM OF 1929

THIS MAP COMPLIES WITH NATIONAL MAP ACCURACY STANDARDS

| CONVERSION TABLE |         | DECLINATION DIAGRAM |  | ADJOINING MAPS |    |    |
|------------------|---------|---------------------|--|----------------|----|----|
| Meters           | Feet    | Diagram             |  | 1              | 2  | 3  |
| 1                | 3.2808  |                     |  | 1              | 2  | 3  |
| 2                | 6.5617  |                     |  | 4              | 5  | 6  |
| 3                | 9.8425  |                     |  | 7              | 8  | 9  |
| 4                | 13.1234 |                     |  | 10             | 11 | 12 |
| 5                | 16.4042 |                     |  | 13             | 14 | 15 |
| 6                | 19.6850 |                     |  | 16             | 17 | 18 |
| 7                | 22.9659 |                     |  | 19             | 20 | 21 |
| 8                | 26.2467 |                     |  | 22             | 23 | 24 |
| 9                | 29.5275 |                     |  | 25             | 26 | 27 |
| 10               | 32.8084 |                     |  | 28             | 29 | 30 |

To convert meters to feet multiply by 3.2808  
 To convert feet to meters multiply by 0.3048  
 UTM grid convergence (GN) and 1983 magnetic declination (M) at center of map Diagram is approximate  
 1. Vancouver  
 2. Hood River  
 3. Goldendale  
 4. Oregon City  
 5. Clatskanie  
 6. N. Santiam River  
 7. Madras  
 8. Stephenson Mtn.

FOR SALE BY U. S. GEOLOGICAL SURVEY, DENVER, COLORADO 80225 OR RESTON, VIRGINIA 22092

Topographic Map Symbols

|   |  |
|---|--|
| Primary highway, hard surface                               |  |
| Secondary highway, hard surface                             |  |
| Light duty road, principal street, hard or improved surface |  |
| Other road or street, trail                                 |  |
| Route marker: Interstate, U. S., State                      |  |
| Railroad: standard gage, narrow gage                        |  |
| Bridge: overpass, underpass                                 |  |
| Tunnel: road, railway                                       |  |
| Ball up area, locality, elevation                           |  |
| Airport: landing field, landing strip                       |  |
| National boundary   |  |
| State boundary  |  |
| County boundary   |  |
| National or State reservation boundary                      |  |
| Land grant boundary   |  |
| U. S. public lands survey: range, township, section         |  |
| Range, township, section line: protracted                   |  |
| Power transmission line; pipeline                           |  |
| Dam; dam with lock  |  |
| Cemetery; building  |  |
| Wetland: water with springs                                 |  |
| Mine shaft; pit or cave; mine, quarry, gravel pit           |  |
| Campground; picnic area; U. S. location monument            |  |
| Ruin; cliff dwelling  |  |
| Distorted surface: strip mine, lava, sand                   |  |
| Contours: index, intermediate, supplementary                |  |
| Bathymetric contours: index, intermediate                   |  |
| Stream: lake, perennial, intermittent                       |  |
| Rapid, large and small; falls, large and small              |  |
| Area to be submerged; marsh, swamp                          |  |
| Land subject to controlled inundation; woodland             |  |
| Scrub; mangrove   |  |
| Orchard; vineyard   |  |

A pamphlet describing topographic maps is available on request

MOUNT HOOD, OREGON  
N4500-W12100/30X60  
1983

SCALE 1:100 000



1 CENTIMETER ON THE MAP REPRESENTS 1 KILOMETER ON THE GROUND

CONTOUR INTERVAL 50 METERS