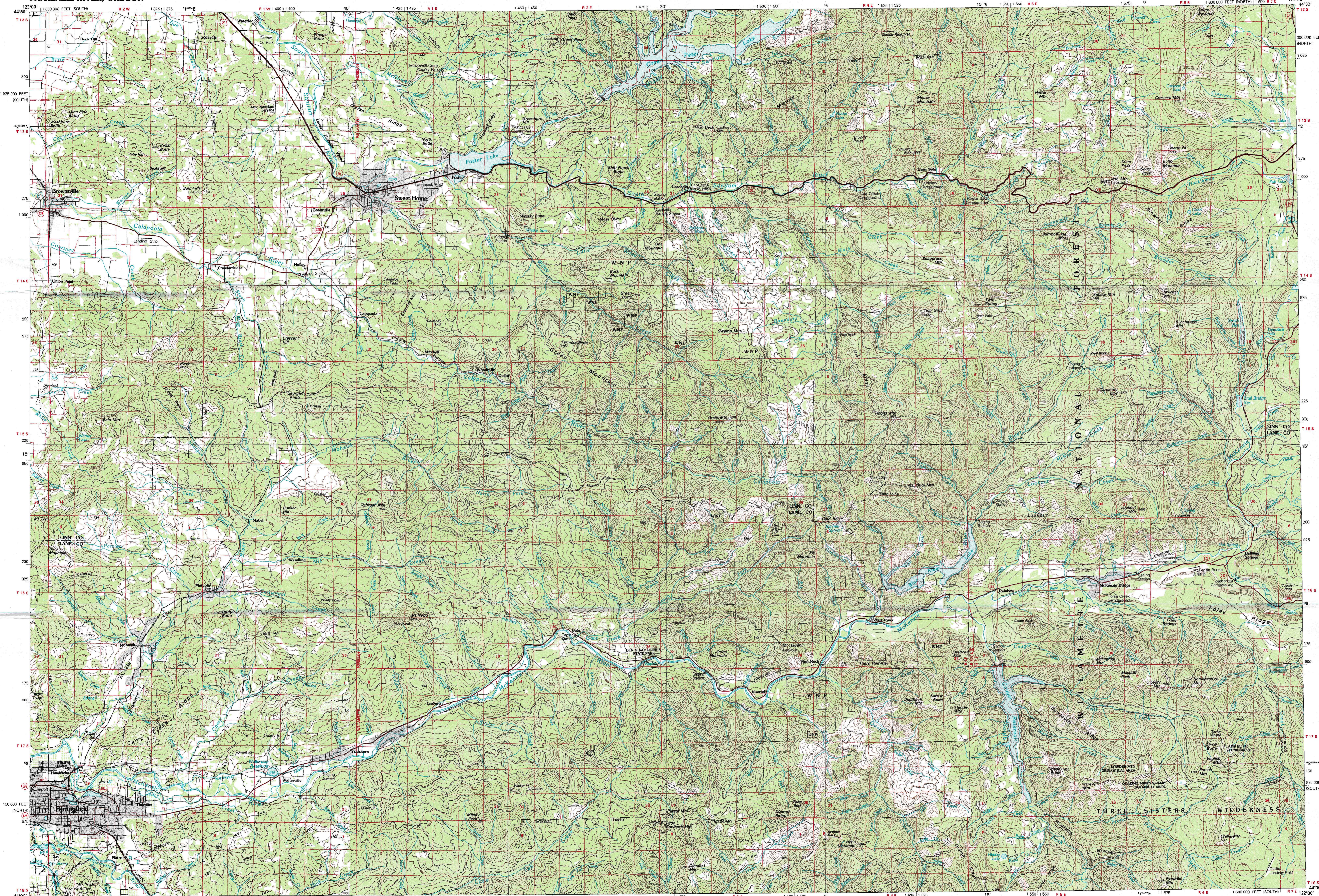


MC KENZIE RIVER, OREGON

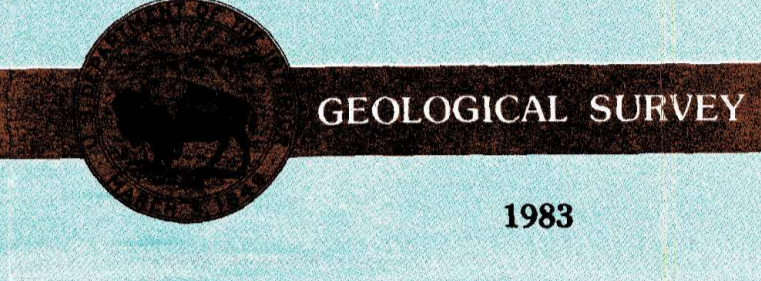
30X60 MINUTE SERIES (TOPOGRAPHIC)



1:100 000-scale metric topographic map of McKenzie River OREGON



- 30 X 60 MINUTE QUADRANGLE SHOWING
- Contours and elevations in meters
  - Highways, roads and other manmade structures
  - Water features
  - Woodland areas
  - Geographic names



Produced by the United States Geological Survey  
 Compiled from USGS 1:24 000 and 1:62 500-scale topographic maps dated 1950-1967. Planimetry revised from aerial photographs taken 1973 and other source data. Revised information not field checked. Map edited 1983.  
 Projection and 10 000-meter grid, zone 10, Universal Transverse Mercator  
 25 000-foot grid ticks based on Oregon coordinate system, north and south zones  
 1927 North American Datum  
 To place on the predicted North American Datum 1983 move the projection lines 22 meters north and 94 meters east  
 There may be private inholdings within the boundaries of the National or State reservations shown on this map

CONTOUR INTERVAL 50 METERS  
 NATIONAL GEODETIC VERTICAL DATUM OF 1929  
 THIS MAP COMPLIES WITH NATIONAL MAP ACCURACY STANDARDS

Meters	Feet
1	3.2808
2	6.5617
3	9.8425
4	13.1234
5	16.4043
6	19.6852
7	22.9660
8	26.2469
9	29.5278
10	32.8084

To convert meters to feet multiply by 3.2808  
 To convert feet to meters multiply by 0.3048

DECLINATION DIAGRAM  
 67° 13' N  
 103° 15' W  
 UTM grid convergence (G) and 1983 magnetic declination (M) at center of map. Diagram is approximate.

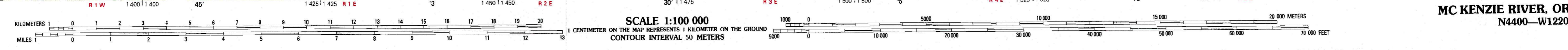
ADJOINING MAPS

	1	2	3
1	Corvallis		
2	North Santiam R.		
3	Mudras		
4			
5			
6	6 Road		
7	Coquille Grove		
8	Chalkridge		
9	La Pine		

FOR SALE BY U. S. GEOLOGICAL SURVEY, DENVER, COLORADO 80225 OR RESTON, VIRGINIA 22092

Topographic Map Symbols

- Primary highway, hard surface
- Secondary highway, hard surface
- Light duty road, principal street, hard or improved surface
- Other road or street, trail
- Road marker, Interstate, U. S. State
- Railroad, standard gage, narrow gage
- Bridge, overpass, underpass
- Tunnel, road, railroad
- Built up area, locality, elevation
- Airport, landing field, landing strip
- National boundary
- State boundary
- County boundary
- National or State reservation boundary
- Land grant boundary
- U. S. public lands survey: range, township, section
- Range, township, section line: protracted
- Power transmission line, pipeline
- Dam, dam with tail
- Cemetery, building
- Windmill, water well, spring
- Mine shaft, adit or cave, mine, quarry, gravel pit
- Campground, picnic area, U. S. location monument
- Ruins, cliff dwelling
- Distorted surface: strip mine, lava, sand
- Contours: index, intermediate, supplementary
- Bathymetric contours: index, intermediate
- Stream, lake: perennial; intermittent
- Rapids, large and small, falls, large and small
- Area to be submerged: marsh, swamp
- Land subject to controlled inundation; woodland
- Scrub; mangrove
- Orchard; vineyard



MC KENZIE RIVER, OREGON  
 N4400-W12200/30X60  
 1983

A pamphlet describing topographic maps is available on request