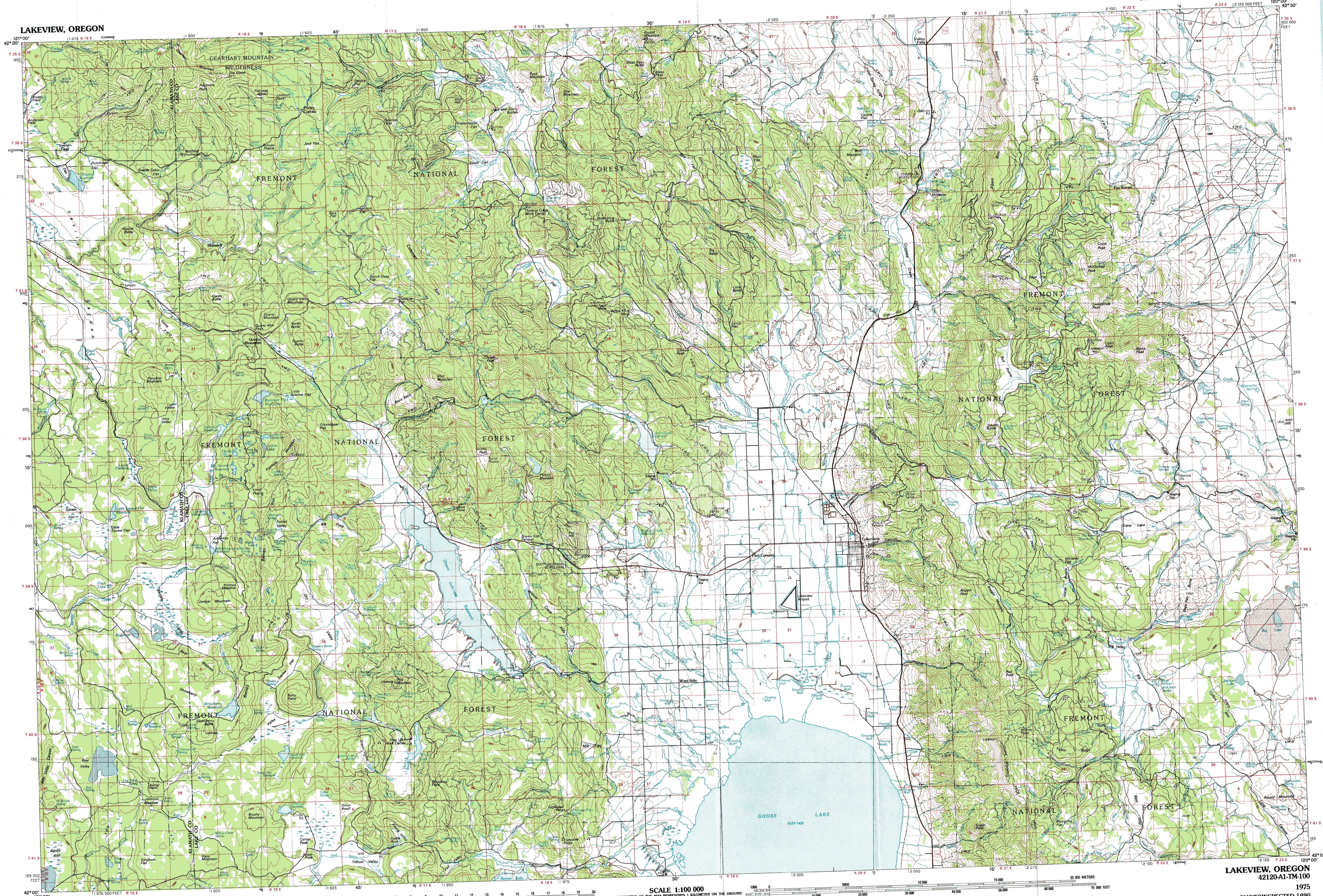


LAKEVIEW, OREGON



# Lakeview OREGON

1:100 000-scale metric topographic map

30 X 60 MINUTE QUADRANGLE SHOWING

- Contours and elevations in meters
- Highways, roads and other manmade structures
- Water features
- Woodland areas
- Geographic names

**GEOLOGICAL SURVEY**

1975  
PHOTOINSPECTED 1990

Produced by the United States Geological Survey  
 Compiled from USGS 1:24 000- and 1:62 500-scale topographic maps dated 1960-1968. Planimetry revised from aerial photographs taken 1975 and other source data. Revised information not field checked. Map edited 1975  
 North American Datum of 1927 (NAD 27). Projection and 10 000-meter grid. Universal Transverse Mercator, zone 10  
 25 000-foot ticks: Oregon coordinate system, south zone  
 The values of the shift between NAD 27 and North American Datum of 1983 (NAD 83) for 7.5-minute intersections are obtainable from National Geodetic Survey NADCON software  
 There may be private inholdings within the boundaries of the National or State reservations shown on this map  
 Map photoinspected using 1990 photographs  
 No major culture or drainage changes found

CONTOUR INTERVAL 50 METERS  
 NATIONAL GEODETIC VERTICAL DATUM OF 1929  
 ELEVATIONS SHOWN TO THE NEAREST METER

THIS MAP COMPLIES WITH NATIONAL MAP ACCURACY STANDARDS

CONVERSION TABLE		DECLINATION DIAGRAM		ADJOINING MAPS		
Meters	Feet	Magnetic	True	1	2	3
1	3.2808	113° 15'	113° 00'	1	2	3
2	6.5617	113° 15'	113° 00'	4	5	6
3	9.8425	113° 15'	113° 00'	7	8	9
4	13.1234	113° 15'	113° 00'			
5	16.4042	113° 15'	113° 00'			
6	19.6850	113° 15'	113° 00'			
7	22.9659	113° 15'	113° 00'			
8	26.2467	113° 15'	113° 00'			
9	29.5275	113° 15'	113° 00'			
10	32.8084	113° 15'	113° 00'			

To convert meters to feet multiply by 3.2808  
 To convert feet to meters multiply by 0.3048

UTM grid convergence (EM) and 1985 magnetic declination (MD) at center of map. Diagram is approximate.

1 Williamson River  
 2 Lake Abert  
 3 Bluejacket Lake  
 4 Klamath Falls  
 5 Adair  
 6 Trout Lake  
 7 Cedarville  
 8 Vya

FOR SALE BY U.S. GEOLOGICAL SURVEY  
 DENVER, COLORADO 80225, OR RESTON, VIRGINIA 22092

### Topographic Map Symbols

Primary highway, hard surface	—
Secondary highway, hard surface	—
Light duty road, principal street, hard or improved surface	—
Other road or street, trail	—
Route marker: Interstate, U. S., State	—
Railroad: standard gage; narrow gage	—
Bridge: overpass, underpass	—
Tunnel: road, railroad	—
Built up area: locality, elevation	—
Airport: landing field; landing strip	—
National boundary	—
State boundary	—
County boundary	—
National or State reservation boundary	—
Land grant boundary	—
U. S. public lands survey: range, township, section	—
Range, township, section line: protected	—
Power transmission line: pipeline	—
Dam: dam with lock	—
Cemetery: building	—
Woodmill; water well; spring	—
Mine shaft; adit or cave; mine, quarry; gravel pit	—
Campground; picnic area; U. S. location monument	—
Beach; dune; dune with lock	—
Disturbed surface: strip mine, levee, sand	—
Contours: index, intermediate, supplementary	—
Bathymetric contours: index, intermediate	—
Stream, lake: perennial, intermittent	—
Runoff: large and small; hills, large and small	—
Area to be submerged: marsh, swamp	—
Land subject to controlled inundation: woodland	—
Scrub; mangrove	—
Orchard; vineyard	—

A pamphlet describing topographic maps is available on request

LAKEVIEW, OREGON  
 42120-A1-TM-100  
 1975  
 PHOTOINSPECTED 1990

SCALE 1:100 000  
 1 CENTIMETER ON THE MAP REPRESENTS 1 KILOMETER ON THE GROUND  
 CONTOUR INTERVAL 50 METERS

