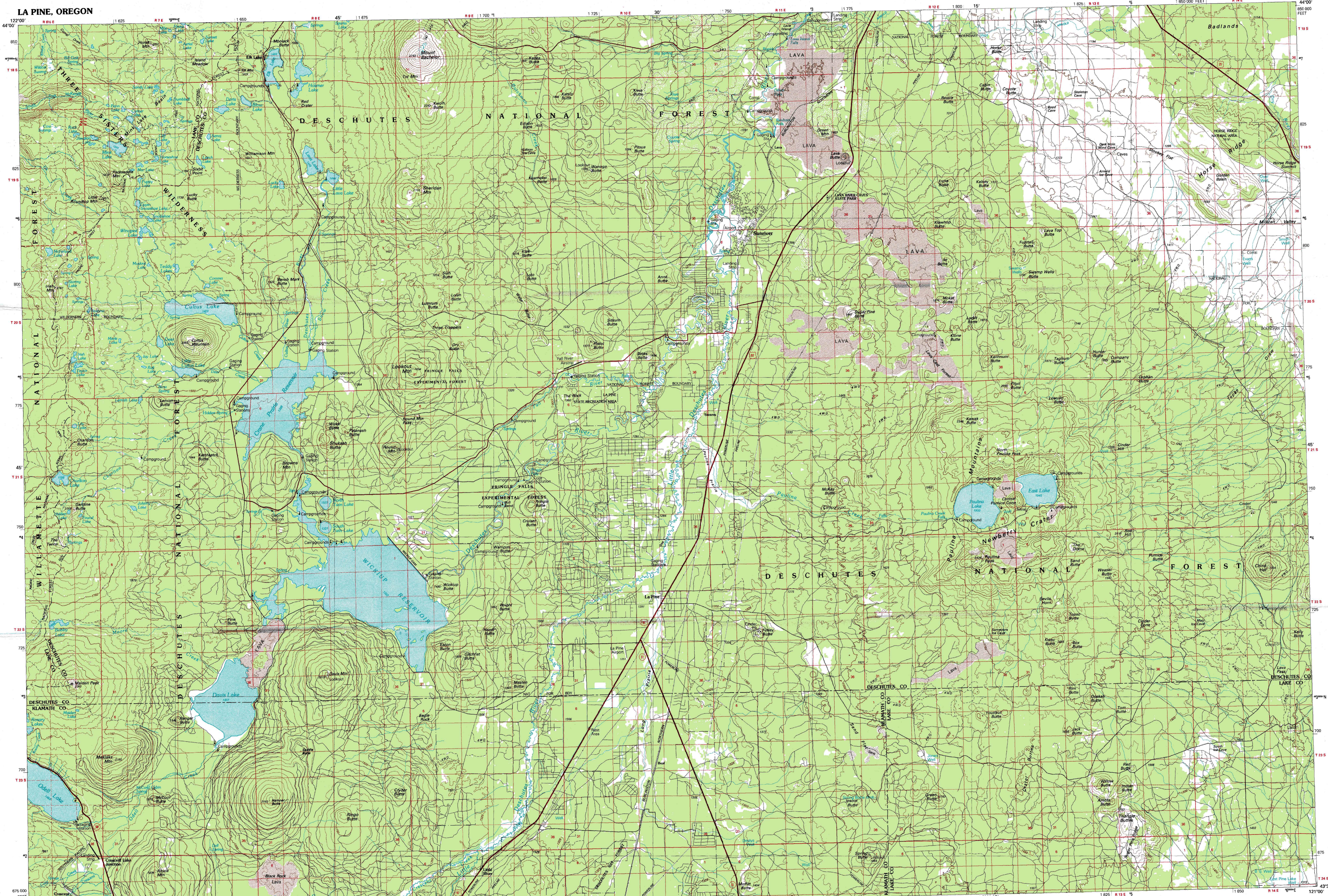


LA PINE, OREGON

30X60 MINUTE SERIES (TOPOGRAPHIC)



La Pine OREGON

1:100 000-scale metric topographic map



30 X 60 MINUTE QUADRANGLE SHOWING

- Contours and elevations in meters
- Highways, roads and other manmade structures
- Water features
- Woodland areas
- Geographic names

GEOLOGICAL SURVEY

1986

Produced by the United States Geological Survey

Compiled from USGS 1:250 000-scale topographic maps dated 1981-1982. Planimetry revised from aerial photographs taken 1973-1974 and other source data. Revised information not field checked. Map edited 1986.

Projection and 10 000-meter grid, zone 10 Universal Transverse Mercator 25 000-foot grid ticks based on Oregon coordinate system south zone. 1927 North American Datum. To place on the predicted North American Datum 1983 move the projection lines 21 meters north and 92 meters east. Where omitted, land lines have not been shown because of insufficient data.

There may be private inholdings within the boundaries of the National or State reservations shown on this map.

CONTOUR INTERVAL 50 METERS  
 SUPPLEMENTARY CONTOUR INTERVAL 25 METERS  
 NATIONAL GEODETIC VERTICAL DATUM OF 1929  
 ELEVATIONS SHOWN TO THE NEAREST METER

THIS MAP COMPLIES WITH NATIONAL MAP ACCURACY STANDARDS

CONVERSION TABLE		DECLINATION DIAGRAM	ADJOINING MAPS		
Meters	Feet		1	2	3
1	3.2808		1	2	3
2	6.5616		4	5	
3	9.8424		6	7	8
4	13.1232				
5	16.4040				
6	19.6848				
7	22.9656				
8	26.2464				
9	29.5272				
10	32.8080				

U.T.M. grid convergency (GN) and 1983 magnetic declination (MD) at center of map. Diagram is approximate.

FOR SALE BY U. S. GEOLOGICAL SURVEY, DENVER, COLORADO 80225 OR RESTON, VIRGINIA 22092

Topographic Map Symbols

- Primary highway, hard surface
- Secondary highway, hard surface
- Light duty road, principal street, hard or improved surface
- Other road or street, trail
- Route marker: Interstate; U. S.; State
- Railroad: standard gauge; narrow gauge
- Bridge; overpass; underpass
- Tunnel: road; railroad
- Built-up area: locality, elevation
- Access: landing field; landing strip
- National boundary
- State boundary
- County boundary
- National or State reservation boundary
- Land grant boundary
- U. S. public lands survey: range, township, section
- Range: township, section line; protected
- Power transmission line; pipeline
- Dam; dam with lock
- Cemetery; building
- Well; water well; spring
- Mine shaft; adit or cave; mine, quarry; gravel pit
- Campground; picnic area; U. S. location monument
- Ruins; cliff dwelling
- Distorted surface: strip mine, lava, sand
- Contours: index; intermediate; supplementary
- Bathymetric contours: index; intermediate
- Stream, lake; perennial; intermittent
- Swamp, large and small; silt, large and small
- Area to be submerged; marsh, swamp
- Land subject to controlled inundation; woodland
- Scrub; mangrove
- Orchard; vineyard

A graphic describing topographic maps is available on request

LA PINE, OREGON 43121-E1-TM-100

1986

