

ILWACO, WASHINGTON—OREGON

30X60 MINUTE SERIES (TOPOGRAPHIC-BATHYMETRIC)

**Ilwaco**  
WASHINGTON—OREGON

1:100 000-scale metric  
topographic-bathymetric map

- Contours and elevations in meters
- Highways, roads and other manmade structures
- Water features
- Woodland areas
- Geographic names
- Bathymetric contours in meters

U. S. GEOLOGICAL SURVEY  
NATIONAL OCEAN SERVICE

1980

Produced by the United States Geological Survey and the National Ocean Service

Compiled from USGS 1:250 000-scale topographic maps dated 1931 and 1973. Bathymetry compiled by the National Ocean Service from tide-coordinated hydrographic surveys. This information is not intended for navigation purposes. Most lines for water (shaded) are not tide-coordinated and are for general reference only. The shaded area of navigation shown by light and line projection and 10 000-meter grid area (10 Minutes Traverse Method) is based on the predicted North American Datum 1983 more the projection lines 22 meters north and 98 meters east.

Oblique projection survey data, shown in red, furnished by the Minerals Management Service. Heavy line indicates limits of Outer Continental Shelf Official Protection Diagram dated November 2, 1978. The protection on this map is not for Federal leasing purposes, for such purposes, refer to OCS Official Protection Diagram available from the Minerals Management Service. Limited names and bathymetry added 1989.

There may be present obstructions within the boundaries of National or State reservations shown on this map.

**CONTOUR INTERVALS IN METERS**  
Supplementary contour interval: 10 meters  
National Geographic vertical datum of 1989  
Bathymetric contour interval: 10 meters  
Spot heights: supplementary contour interval: 10 meters  
To convert meters to feet multiply by 3.281

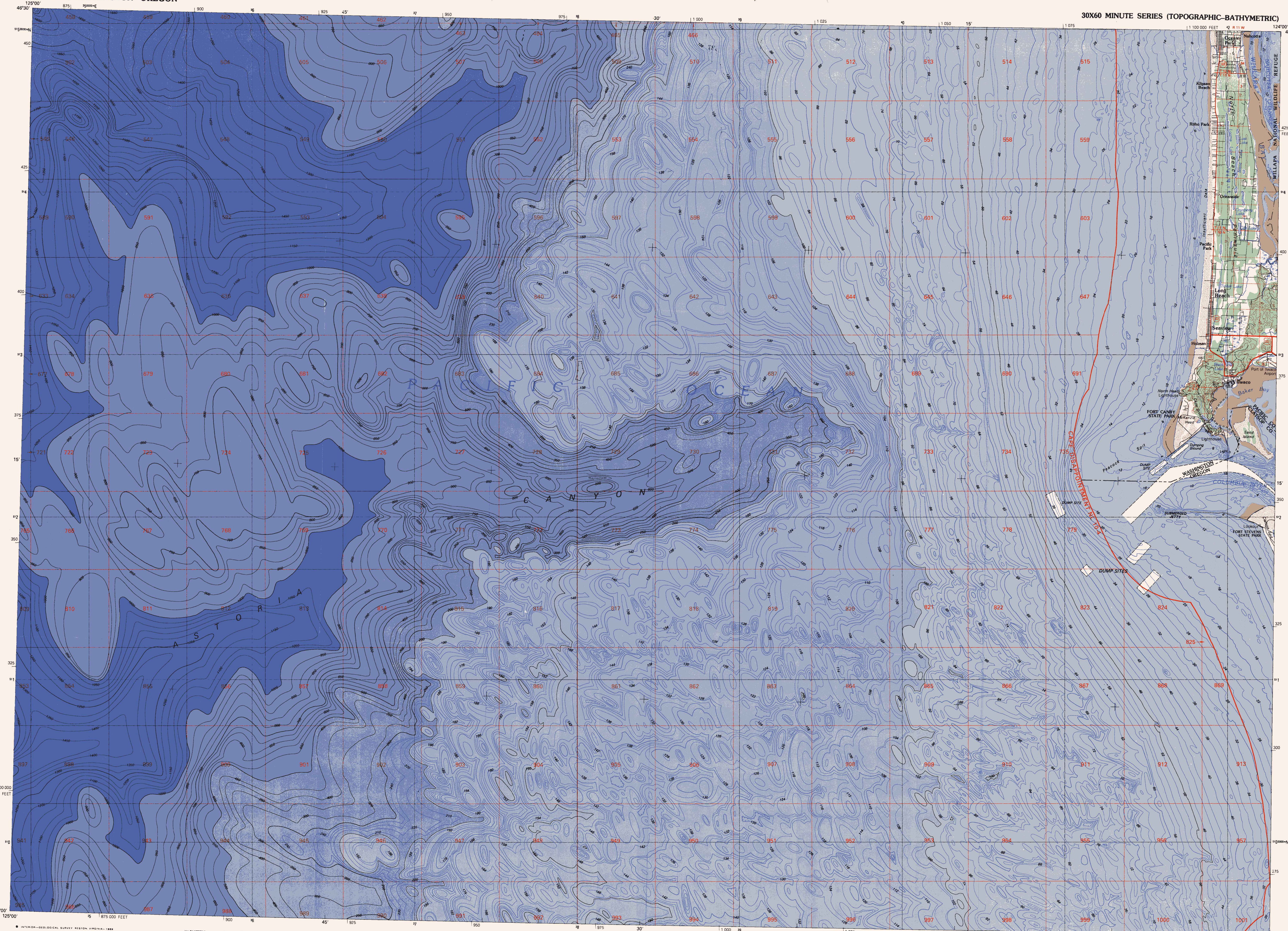
**BASE MAP COMPLETES WITH NATIONAL MAP ACCURACY**  
BATHYMETRIC SURVEY DATA COMPLETES WITH INTERNATIONAL ACCURACY STANDARDS FOR SUCH SPECIAL USES AS OF THE DATE OF THE SURVEY.

CONVERSION TABLE		DECLINATION DIAGRAM		ADJOINING MAPS	
Meters	Feet	Diagram		1	2
1	3.2808	Diagram showing magnetic declination and true north.	100' 100' WELS	3	4
2	6.5617			4	5
3	9.8425	5	6		
4	13.1234	6	7		
5	16.4042	7	8		
6	19.6850	8			
7	22.9659	9			
8	26.2467	10			
9	29.5276				
10	32.8084				

FOR SALE BY U.S. GEOLOGICAL SURVEY  
DENVER, COLORADO 80202, OR RESTON, VIRGINIA 22092  
AND NATIONAL OCEAN SERVICE, ROCKVILLE, MARYLAND 20852

Topographic Map Symbols

- Primary highway, hard surface
- Secondary highway, hard surface
- Light duty road, principal street, hard or improved surface
- Other road or street, trail
- Railroad, standard gauge, narrow gauge
- Bridge, overpass, underpass
- Tunnel, road, railroad
- Built up area, locality, elevation
- Airport, landing field, landing strip
- National boundary
- State boundary
- County boundary
- National or State reservation boundary
- Land grant boundary
- U. S. public lands survey, range, township, section
- Range, township, section line, projected
- Power transmission line, pipeline
- Cemetery, building
- Wellhead, water well, spring
- Mine shaft, adit or cave, mine, quarry, gravel pit
- Campground, picnic area, U. S. location monument
- Ruins, cliff dwelling
- Disturbed surface: strip mine, lava, sand
- Contours: index, intermediate, supplementary
- Bathymetric contours: index, intermediate
- Stream, lake (perennial), intermittent
- Rapids, weir and dam, weir, dam and spillway
- Area to be submerged, marsh, swamp
- Land subject to controlled inundation, wooded
- Scrub, mangrove
- Orchard, vineyard



SCALE 1:100 000  
1 CENTIMETER ON THE MAP REPRESENTS 1 KILOMETER ON THE GROUND  
CONTOUR INTERVAL 20 METERS  
SUPPLEMENTARY CONTOUR INTERVAL 10 METERS

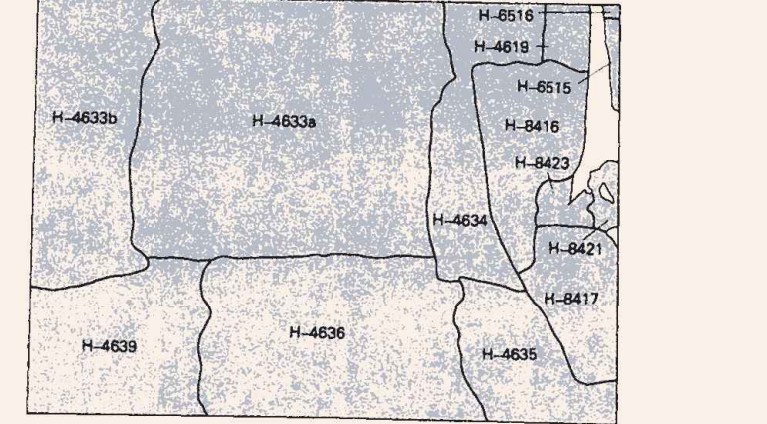
ILWACO, WASHINGTON—OREGON  
46124-A1-TB-100

1980  
BATHYMETRY ADDED 1989

HYDROGRAPHIC SURVEY INFORMATION

SURVEY NUMBER	SURVEY DATE	SURVEY SCALE	SURVEY LINE SPACING (NAUT. MILES)
H-4610	1926	1:20 000	10-12
H-4611	1926	1:20 000	10-12
H-4612	1926	1:20 000	10-12
H-4613	1926	1:20 000	10-12
H-4614	1926	1:20 000	10-12
H-4615	1926	1:20 000	10-12
H-4616	1926	1:20 000	10-12
H-4617	1926	1:20 000	10-12
H-4618	1926	1:20 000	10-12
H-4619	1926	1:20 000	10-12
H-4620	1926	1:20 000	10-12

HYDROGRAPHIC SURVEY INDEX



Photographic copies of the above and prior surveys may be obtained at the cost of reproduction by addressing the Director, NCCS&O National Ocean Service, National Ocean Service Administration, Rockville, Maryland 20852.