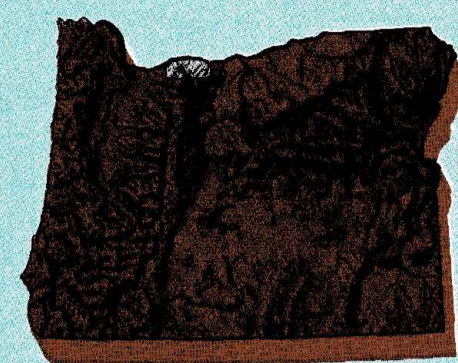
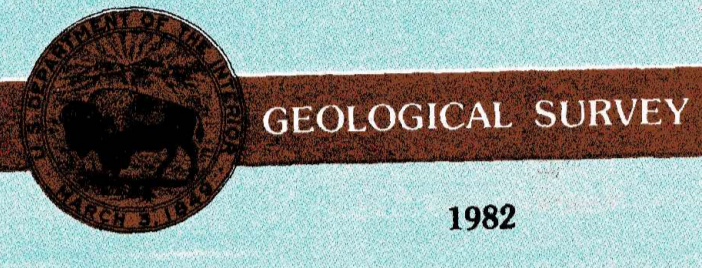


1:100 000-scale metric topographic map of Hood River OREGON—WASHINGTON



30 X 60 MINUTE QUADRANGLE SHOWING

- Contours and elevations in meters
- Highways, roads and other manmade structures
- Water features
- Woodland areas
- Geographic names



Produced by the United States Geological Survey  
 Compiled from USGS 1:24 000 and 1:62 500-scale topographic maps dated 1957-1979. Planimetry revised from aerial photographs taken 1961 and other source data. Revised information not field checked. Map edited 1982.  
 Projection and 10 000-meter grid, zone 10, Universal Transverse Mercator  
 25 000-foot grid ticks based on Washington coordinate system, south zone and Oregon coordinate system, south zone 1927 North American Datum  
 To place on the predicted North American Datum 1983 move the projection lines 21 meters north and 91 meters east. There may be private inholdings within the boundaries of the National or State reservations shown on this map.

CONTOUR INTERVAL 50 METERS NATIONAL GEODETIC VERTICAL DATUM OF 1929

THIS MAP COMPLIES WITH NATIONAL MAP ACCURACY STANDARDS

Meters	Feet
1	3.2808
2	6.5617
3	9.8425
4	13.1234
5	16.4042
6	19.6850
7	22.9659
8	26.2467
9	29.5275
10	32.8084

To convert meters to feet multiply by 3.2808  
 To convert feet to meters multiply by 0.3048

UTM grid convergence (GN) and 1982 magnetic declination (M) at center of map. Diagram is approximate.

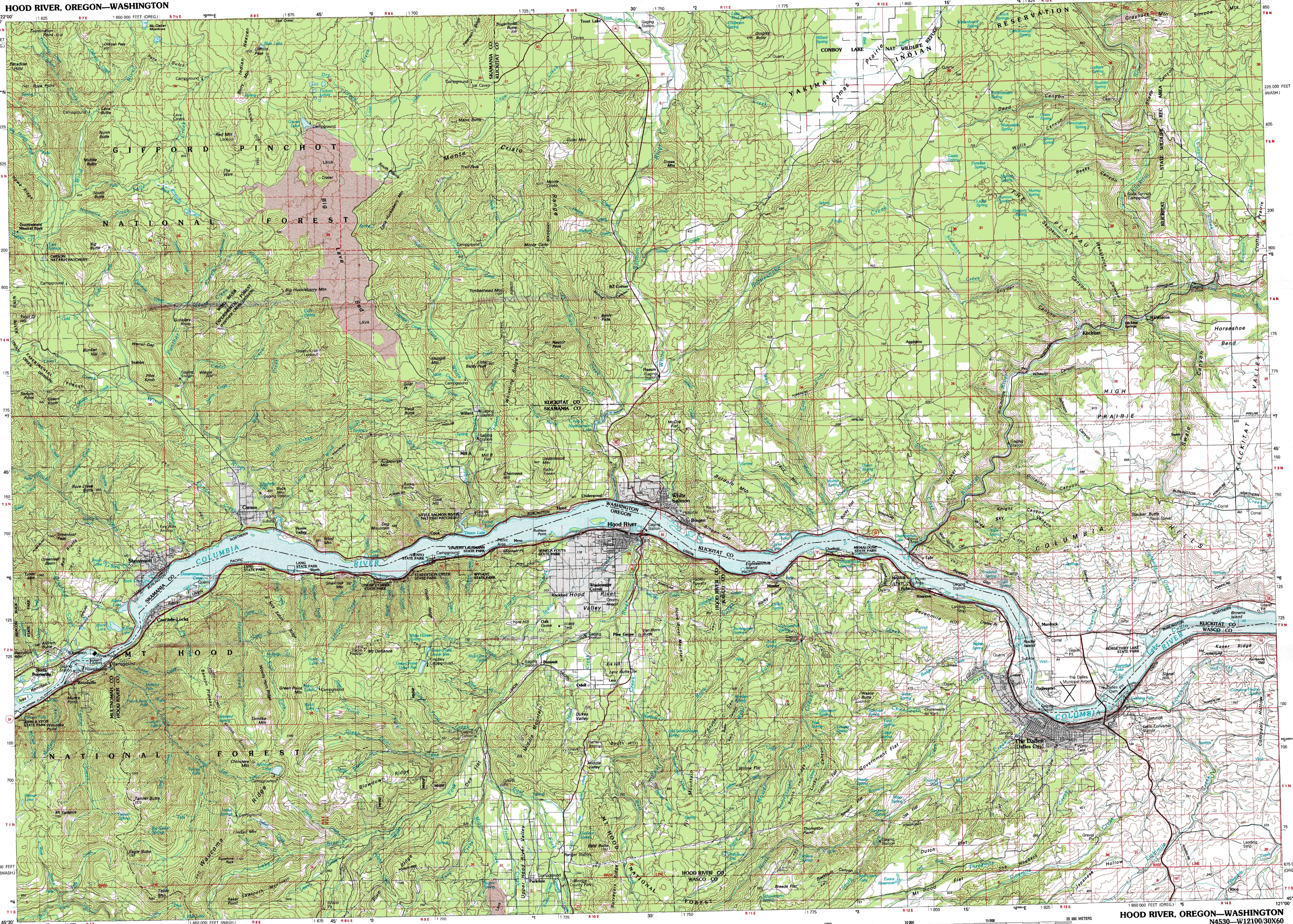
ADJOINING MAPS	1	2	3
1	Mount St. Helens		
2	Mount Adams		
3	Tongue Falls		
4	Vancouver		
5	Goldendale		
6	Oregon City		
7	Mount Hood		
8	Condon		

FOR SALE BY U. S. GEOLOGICAL SURVEY, DENVER, COLORADO 80202 OR RESTON, VIRGINIA 22092

Topographic Map Symbols

- Primary highway, hard surface
- Secondary highway, hard surface
- Light duty road, principal street, hard or improved surface
- Other road or street; trail
- Route marker: interstate; U. S.; State
- Railroad: standard gage, narrow gage
- Bridge, overpass, underpass
- Tunnel: road, railroad
- Built up area, locality, elevation
- Airport; landing field; landing strip
- National boundary
- State boundary
- County boundary
- National or State reservation boundary
- Land grant boundary
- U. S. public lands survey: range, township; section
- Range, township; section line: protracted
- Power transmission line; pipeline
- Dam; dam with lock
- Cemetery; building
- Wells: water well; spring
- Mine shaft; salt or cave; mine; quarry; gravel pit
- Campground; picnic area; U. S. location monument
- Ruin; cliff dwelling
- Distorted surface: strip mine, lava; sand
- Contours: index; intermediate; supplementary
- Bathymetric contours: index; intermediate
- Stream, lake, reservoir, intermittent
- Rapids, large and small; falls, large and small
- Area to be submerged; marsh, swamp
- Land subject to controlled inundation; woodland
- Scrub; mangrove
- Orchard; vineyard

A pamphlet describing topographic maps is available on request



SCALE 1:100 000  
1 CENTIMETER ON THE MAP REPRESENTS 1 KILOMETER ON THE GROUND  
CONTOUR INTERVAL 50 METERS

HOOD RIVER, OREGON—WASHINGTON  
N4530—W12100/30X60  
1982

