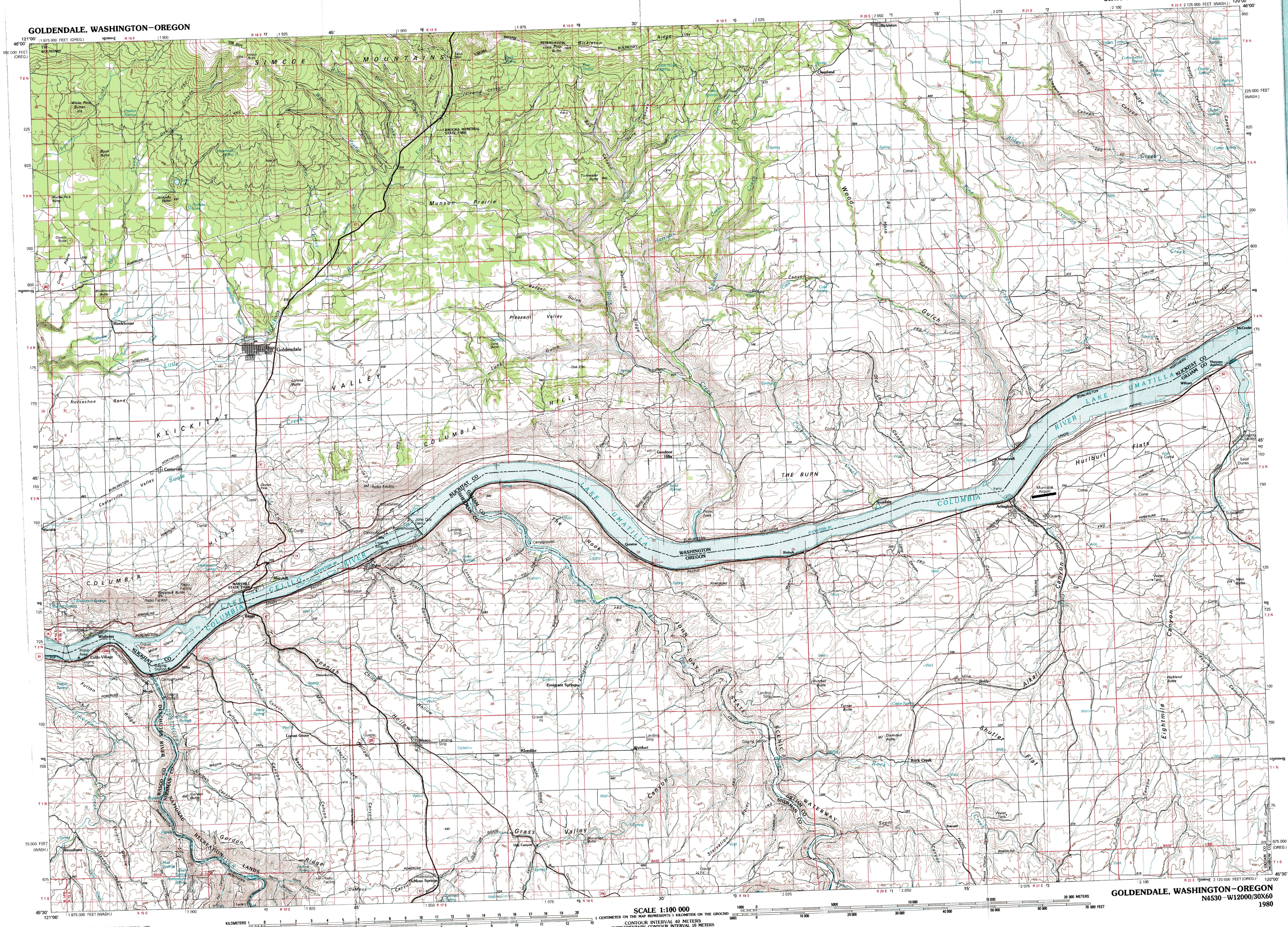


GOLDENDALE, WASHINGTON-OREGON

30X60 MINUTE SERIES (TOPOGRAPHIC)



1:100 000-scale metric topographic map of **Goldendale** WASHINGTON-OREGON

30 X 60 MINUTE QUADRANGLE SHOWING

- Contours and elevations in meters
- Highways, roads and other manmade structures
- Water features
- Woodland areas
- Geographic names

GEOLOGICAL SURVEY

1980

Produced by the United States Geological Survey
 Compiled from USGS 1:24 000 and 1:62 500-scale topographic maps dated 1957-1977. Planimetry revised from aerial photographs taken 1975, 1977, and other source data. Revised information not field checked. Map edited 1980.
 Projection and 10 000-meter grid, zone 10, Universal Transverse Mercator
 25 000-foot grid ticks based on Washington coordinate system, south zone and Oregon coordinate system, north zone, 1927 North American Datum
 To place on the predicted North American Datum 1983 move the projection lines 20 meters north and 89 meters east. There may be private landholdings within the boundaries of the National or State reservations shown on this map.

CONTOUR INTERVAL 40 METERS
 SUPPLEMENTARY CONTOUR INTERVAL 10 METERS
 NATIONAL GEODETIC VERTICAL DATUM OF 1929

THIS MAP COMPLEES WITH NATIONAL MAP ACCURACY STANDARDS

CONVERSION TABLE		DECLINATION DIAGRAM		ADJOINING MAPS		
Meters	Feet	1975	1980	1	2	3
1	3.2808	1° 14' 30"	1° 14' 30"	1	2	3
2	6.5616	1° 14' 30"	1° 14' 30"	4	5	
3	9.8424	1° 14' 30"	1° 14' 30"	6	7	8
4	13.1232	1° 14' 30"	1° 14' 30"			
5	16.4040	1° 14' 30"	1° 14' 30"			
6	19.6848	1° 14' 30"	1° 14' 30"			
7	22.9656	1° 14' 30"	1° 14' 30"			
8	26.2464	1° 14' 30"	1° 14' 30"			
9	29.5272	1° 14' 30"	1° 14' 30"			
10	32.8080	1° 14' 30"	1° 14' 30"			

To convert meters to feet multiply by 3.2808
 To convert feet to meters multiply by 0.3048

UTM grid convergence (GN) and 1980 magnetic declination (MD) at center of map
 Diagram is approximate

1	Mount Adams
2	Toppenish
3	Blackland
4	Hood River
5	Hermiston
6	Mount Hood
7	Condon
8	Heggen

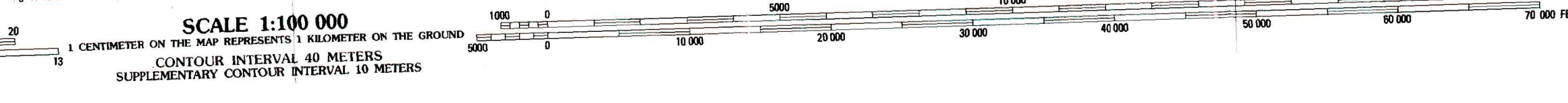
FOR SALE BY U.S. GEOLOGICAL SURVEY, DENVER, COLORADO 80225 OR RESTON, VIRGINIA 22092

Topographic Map Symbols

- Primary highway, hard surface
- Secondary highway, hard surface
- Light duty road, principal street, hard or improved surface
- Other road or street, trail
- Route marker, Interstate, U. S., State
- Railroad, standard gage, narrow gage
- Bridge, overpass, underpass
- Tunnel, road, railroad
- Built up area, locality, elevation
- Airport, landing field, landing strip
- National boundary
- State boundary
- County boundary
- National or State reservation boundary
- Land grant boundary
- U. S. public lands survey, range, township, section
- Range, township, section line, pretractor
- Power transmission line, pipeline
- Dam, dam with lock
- Cemetery, building
- Windsill, water well, spring
- Mine shaft, adit or cave, mine, quarry, gravel pit
- Campground, picnic area, U. S. location monument
- Rocks, cliff overhang, marsh, swamp
- Disturbed surface, strip mine, levee, sand
- Contours, index, intermediate, supplementary
- Bathymetric contours, index, intermediate
- Stream, lake, perennial, intermittent
- Reefs, large and small, tides, large and small
- Area to be submerged, marsh, swamp
- Land subject to controlled inundation, woodland
- Scrub, mangrove
- Orchard, vineyard

A pamphlet describing topographic maps is available on request

GOLDENDALE, WASHINGTON-OREGON
 N4530-W12000/30X60
 1980



U.S. GEOLOGICAL SURVEY, RESTON, VIRGINIA 22092