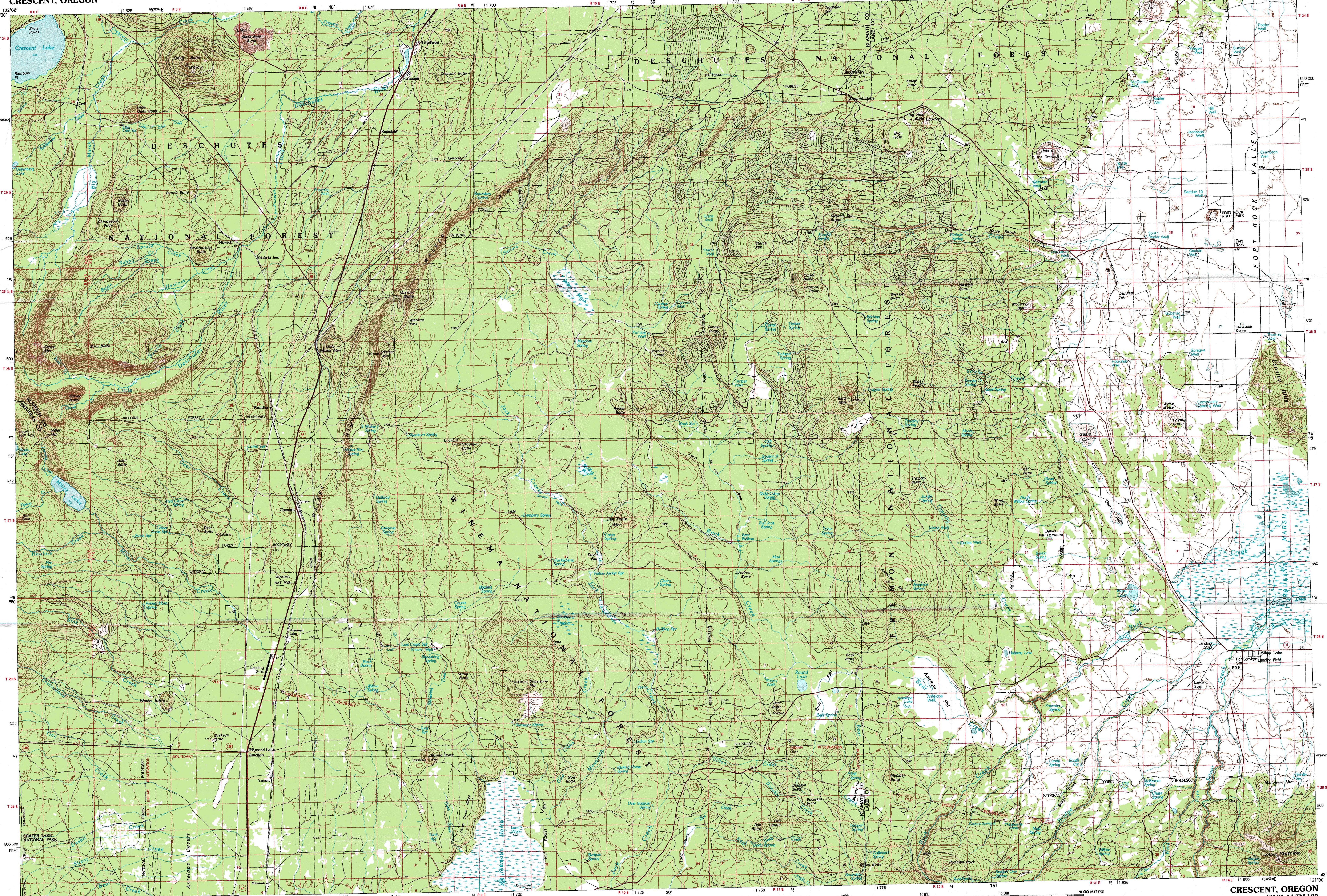


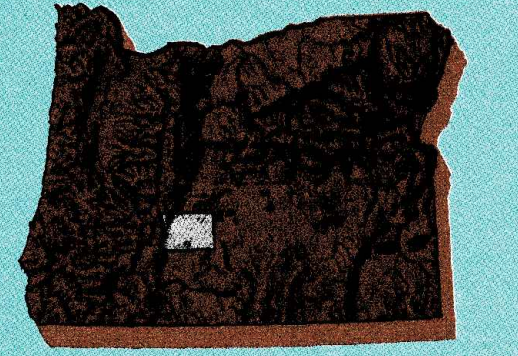
CRESCENT, OREGON

30 X 60 MINUTE SERIES (TOPOGRAPHIC)



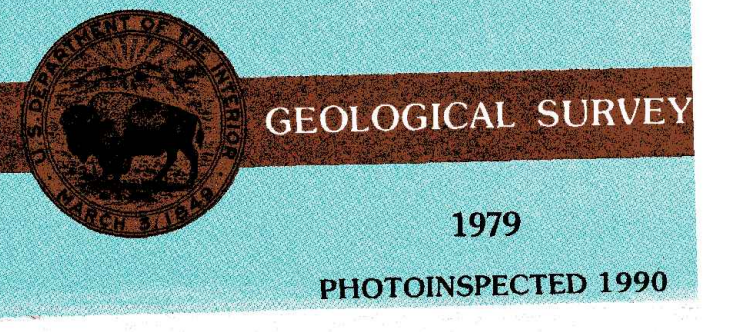
Crescent OREGON

1:100 000-scale metric topographic map



30 X 60 MINUTE QUADRANGLE SHOWING

- Contours and elevations in meters
- Highways, roads and other manmade structures
- Water features
- Woodland areas
- Geographic names



Produced by the United States Geological Survey
 Compiled from USGS 1:24 000- and 1:62 500-scale topographic maps dated 1967-68. Planimetry revised from aerial photographs taken 1974-75 and other source data. Revised information not field checked. Map edited 1979
 North American Datum of 1927 (NAD 27). Projection and 10 000-meter grid: Universal Transverse Mercator, zone 10 25 000-foot ticks: Oregon coordinate system, south zone
 The values of the shift between NAD 27 and North American Datum of 1983 (NAD 83) for 7.5-minute intersections are obtainable from National Geodetic Survey NADCON software
 There may be private inholdings within the boundaries of the National or State reservations shown on this map
 Protracted land lines are dashed
 Map photoinspected using 1990 photographs
 No major culture or drainage changes shown

CONTOUR INTERVAL 20 METERS
 NATIONAL GEODETIC VERTICAL DATUM OF 1929
 ELEVATIONS SHOWN TO THE NEAREST METER

THIS MAP COMPLIES WITH NATIONAL MAP ACCURACY STANDARDS

CONVERSION TABLE		DECLINATION DIAGRAM		ADJOINING MAPS			
Meters	Feet	Diagram		1	2	3	4
1	3.2808			1	2	3	4
2	6.5617			5	6		
3	9.8425			7	8		
4	13.1234						
5	16.4042						
6	19.6850						
7	22.9659						
8	26.2467						
9	29.5275						
10	32.8084						

To convert meters to feet multiply by 3.2808
 To convert feet to meters multiply by 0.3048

ITM grid convergence (GN) and 1979 magnetic declination (M) at center of map diagram is approximate

1 Oakridge
 2 La Pine
 3 Brothers
 4 Diamond Lake
 5 Christmas Valley
 6 Crater Lake
 7 Williamson River
 8 Lake Abert

FOR SALE BY U.S. GEOLOGICAL SURVEY, DENVER, COLORADO 80225
 OR RESTON, VIRGINIA 22092

Topographic Map Symbols

- Primary highway, hard surface
- Secondary highway, hard surface
- Light duty road, principal street, hard or improved surface
- Other road or street; trail
- Route marker: Interstate; U. S.; State
- Railroad: standard gage; narrow gage
- Bridge: overpass; underpass
- Tunnel: road; railroad
- Built up area; locality; elevation
- Airport; landing field; landing strip
- National boundary
- State boundary
- County boundary
- National or State reservation boundary
- Land grant boundary
- U. S. public lands survey: range, township; section
- Range, township; section line: protected
- Power transmission line; pipeline
- Dam; dam with lock
- Cemetery; building
- Wellhead; water well; spring
- Mine shaft; adit or cave; mine; quarry; gravel pit
- Campground; picnic area; U. S. location monument
- Ruins; cliff dwelling
- Distorted surface: strip mine; lava; sand
- Contours: index; intermediate; supplementary
- Bathymetric contours: index; intermediate
- Stream: lake; perennial; intermittent
- Rapids; large and small; falls, large and small
- Area to be submerged; marsh; swamp
- Land subject to controlled inundation; woodland
- Shrub; mangrove
- Orchard; vineyard

A separate describing topographic maps is available on request

CRESCENT, OREGON
 43121-A1-TM-100
 1979
 PHOTOINSPECTED 1990

