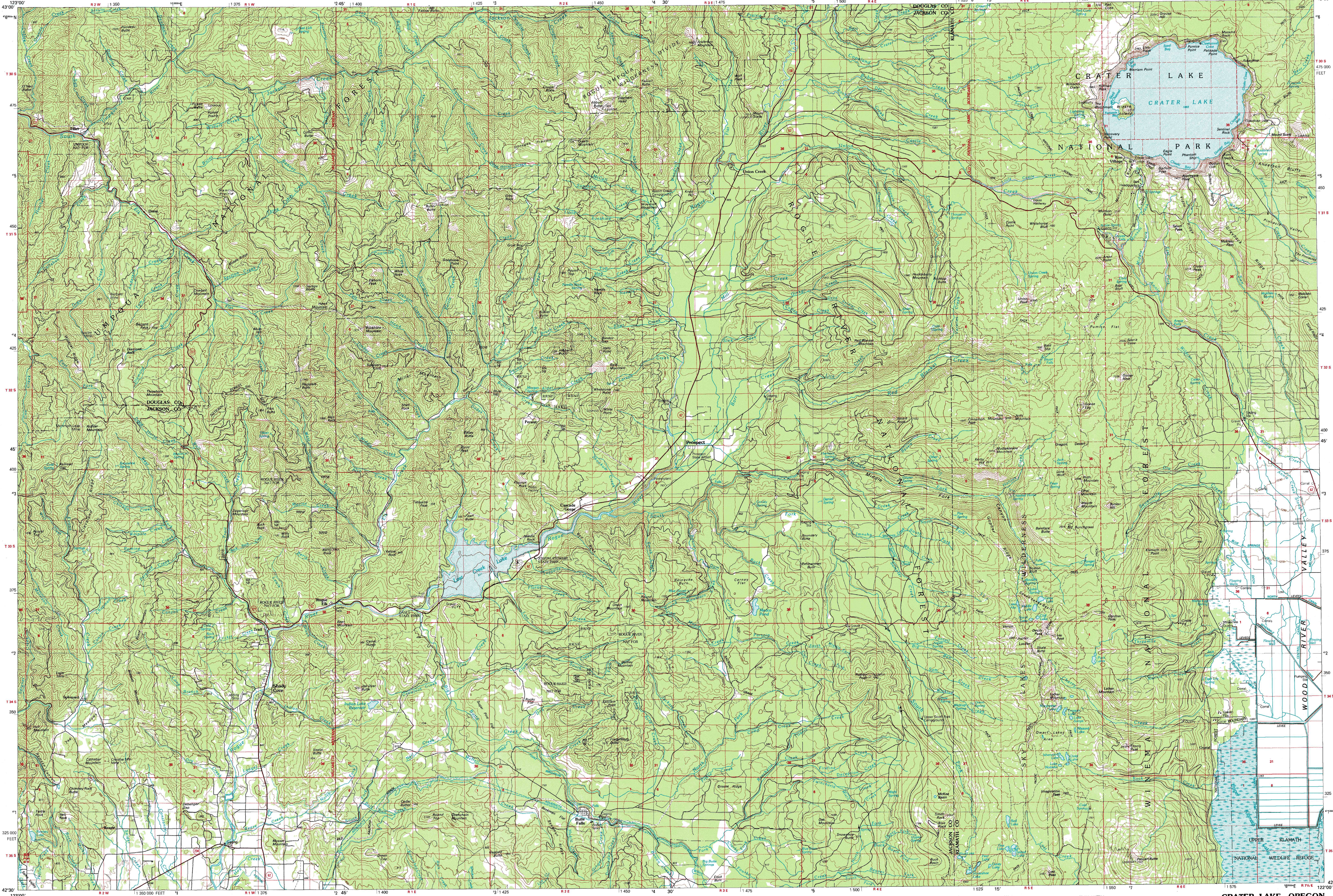


CRATER LAKE, OREGON

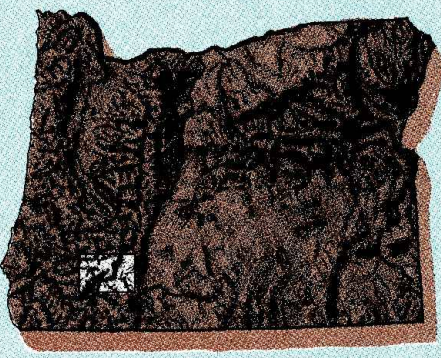
30X60 MINUTE SERIES (TOPOGRAPHIC)



# Crater Lake

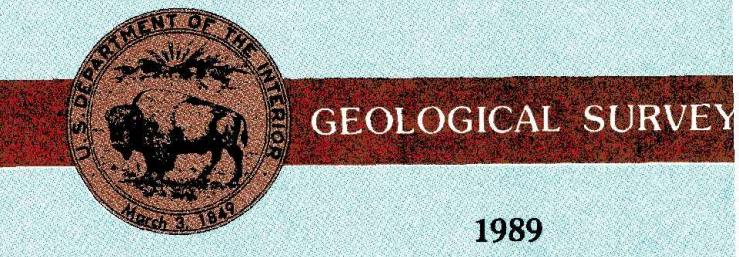
OREGON

1:100 000-scale metric topographic map



30 X 60 MINUTE QUADRANGLE SHOWING

- Contours and elevations in meters
- Highways, roads and other manmade structures
- Water features
- Woodland areas
- Geographic names



Produced by the United States Geological Survey  
 Compiled from USGS 1:24 000 and 1:62 500-scale topographic maps dated 1944-1988. Planimetry revised from aerial photographs taken 1982 and other source data. Revised information not field checked. Map edited 1989.  
 Projection and 10 000-meter grid, zone 10 Universal Transverse Mercator  
 25 000-foot grid ticks based on Oregon coordinate system, south zone, 1927 North American Datum  
 To place on the predicted North American Datum 1983 move the projection lines 20 meters north and 94 meters east  
 There may be private inholdings within the boundaries of the National or State reservations shown on this map

CONTOUR INTERVAL 50 METERS  
 SUPPLEMENTARY CONTOUR INTERVAL 10 METERS  
 NATIONAL GEODETIC DATUM OF 1929  
 ELEVATIONS SHOWN TO THE NEAREST METERS

THIS MAP COMPLIES WITH NATIONAL MAP ACCURACY STANDARDS

CONVERSION TABLE		DECLINATION DIAGRAM		ADJOINING MAPS		
Meters	Feet	Diagram showing magnetic declination from true north.		1	2	3
1	3.2808			4	5	6
2	6.5617			7	8	
3	9.8425					
4	13.1234					
5	16.4042					
6	19.6850					
7	22.9659					
8	26.2467					
9	29.5275					
10	32.8084					

FOR SALE BY U. S. GEOLOGICAL SURVEY, DENVER, COLORADO 80225 OR RESTON, VIRGINIA 22092

### Topographic Map Symbols

Primary highway, hard surface	Secondary highway, hard surface	Light duty road, principal street, hard or improved surface	Other road or access, trail	Route marker, Interstate, U. S. State	Railroad: standard gauge, narrow gauge	Bridge: overpass, underpass	Tunnel: road, railroad	Built up area, locality, elevation	Airport, landing field, landing strip	National boundary	State boundary	County boundary	National or State reservation boundary	Land grant boundary	U. S. public lands survey: range, township, section	Range, township: section line, unextracted	Power transmission line, pipeline	Dam, dam with lock	Cemetery, building	Windmill, water well, spring	Mine shaft, edit or cave, mine, quarry, gravel pit	Campground, picnic area, U. S. location monument	Rail, edit, building	Distorted surface: strip mine, lava, sand	Contours: index, intermediate, supplementary	Bathymetric contours: index, intermediate	Stream, lake: perennial, intermittent	Rapids, large and small, falls, large and small	Area to be submerged, marsh, swamp	Land subject to controlled inundation, woodland	Scrub, mangrove	Orchard, vineyard
-------------------------------	---------------------------------	---	-----------------------------	---------------------------------------	--	-----------------------------	------------------------	------------------------------------	---------------------------------------	-------------------	----------------	-----------------	--	---------------------	---	--	-----------------------------------	--------------------	--------------------	------------------------------	--	--	----------------------	---	--	---	---------------------------------------	---	------------------------------------	---	-----------------	-------------------

A pamphlet describing topographic maps is available on request