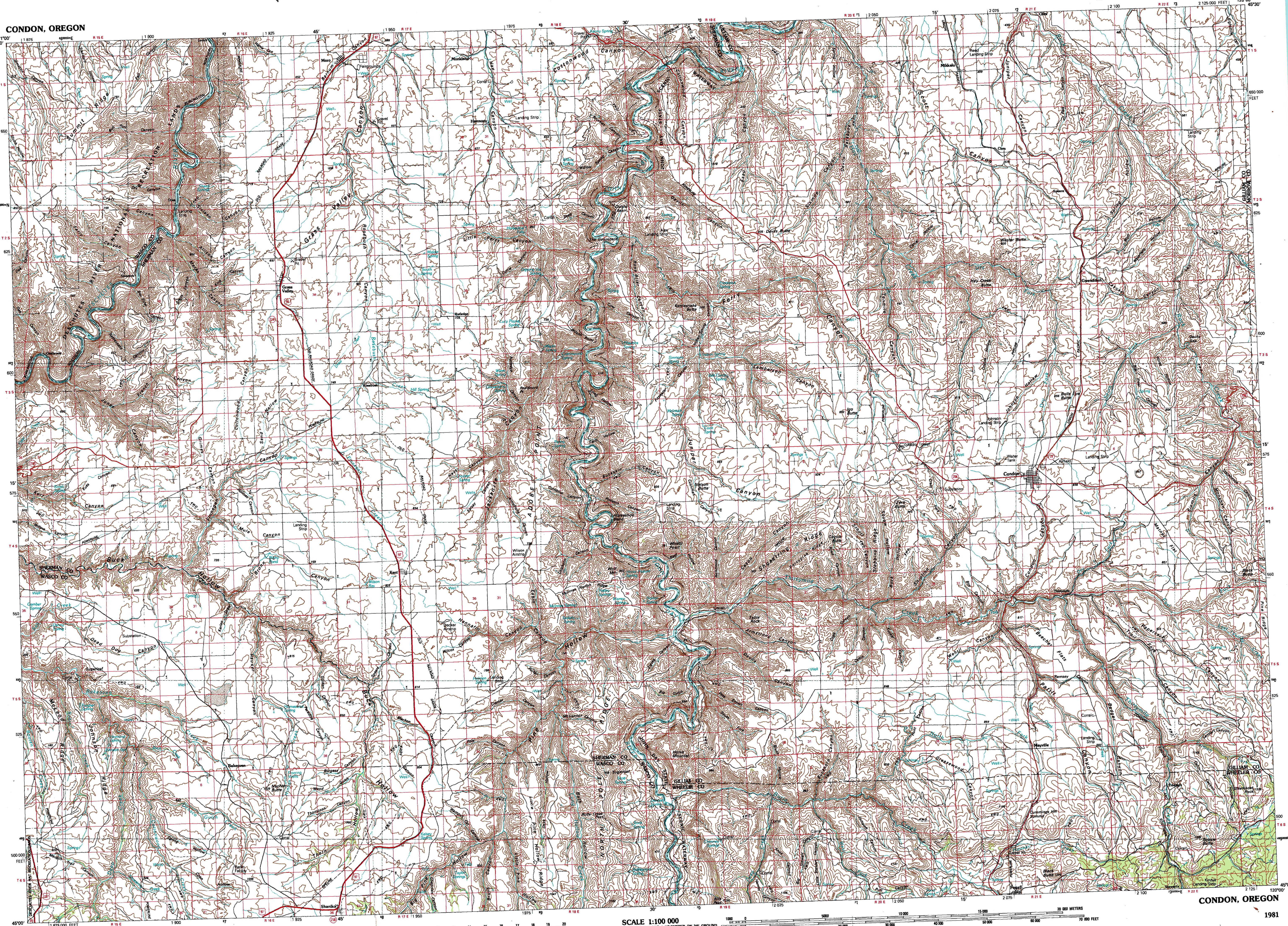


CONDON, OREGON

30 X 60 MINUTE SERIES (TOPOGRAPHIC)



Condon OREGON

1:100 000-scale metric topographic map



30 X 60 MINUTE QUADRANGLE SHOWING

- Contours and elevations in meters
- Highways, roads and other manmade structures
- Water features
- Woodland areas
- Geographic names



Produced by the United States Geological Survey

Compiled from USGS 1:24 000-scale topographic maps dated 1962-1971. Planimetry revised from aerial photographs taken 1975, 1977 and other source data. Revised information not field checked. Map edited 1981.

North American Datum of 1927 (NAD 27). Projection and 10 000-meter grid: Universal Transverse Mercator, zone 10. 25 000-foot ticks: Oregon coordinate system, north zone. The values of the shift between NAD 27 and North American Datum of 1983 (NAD 83) for 7.5-minute intersections are obtainable from National Geodetic Survey NADCON software.

There may be private inholdings within the boundaries of the National or State reservations shown on this map.

CONTOUR INTERVAL 40 METERS  
SUPPLEMENTARY CONTOUR INTERVAL 20 METERS  
NATIONAL GEODETIC DATUM OF 1929  
ELEVATIONS SHOWN TO THE NEAREST METER

THIS MAP COMPLIES WITH NATIONAL MAP ACCURACY STANDARDS

FOR SALE BY U.S. GEOLOGICAL SURVEY,  
P.O. BOX 25286, DENVER, COLORADO, 80225

CONVERSION TABLE		DECLINATION DIAGRAM		ADJOINING MAPS		
Meters	Feet	MAGNETIC		1	2	3
1	3.2808	32° 30' N		1	2	3
2	6.5617	32° 00' N		4	5	
3	9.8425	31° 30' N		6	7	8
4	13.1234	31° 00' N				
5	16.4042	30° 30' N				
6	19.6850	30° 00' N				
7	22.9659	29° 30' N				
8	26.2467	29° 00' N				
9	29.5275	28° 30' N				
10	32.8084	28° 00' N				

To convert meters to feet multiply by 3.2808  
To convert feet to meters multiply by 0.3048

UTM grid convergence (GM) and magnetic declination (MD) at center of map. Diagram is approximate.

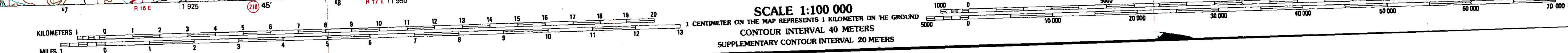
1 Flood River  
2 Gullside  
3 Irrigation  
4 Mountain  
5 Irrigation  
6 Meadow  
7 Settlement Mtn  
8 Monument

ISBN 0-107-85149-0  
9 780607 851492

Topographic Map Symbols

- Primary highway, hard surface
- Secondary highway, hard surface
- Light duty road, principal street, hard or improved surface
- Other road or street, soil
- Route marker: Interstate, U. S. State
- Railroad: standard gauge, narrow gauge
- Bridge: overpass, underpass
- Tunnel: road, railroad
- Built up area, locality, elevation
- Airport: landing field, landing strip
- National boundary
- State boundary
- County boundary
- National or State reservation boundary
- Land grant boundary
- U. S. public lands survey: range, township, section
- Range, township, section line: protected
- Power transmission line, pipeline
- Dam: dam with lock
- Cemetery: building
- Windmill; water well; spring
- Mine shaft; adit or cave; mine, quarry; gravel pit
- Campground; picnic area; U. S. location monument
- Railroad: adit, dwelling
- Distorted surface: strip mine, lava, sand
- Contours: index; intermediate; supplementary
- Bathymetric contours: index; intermediate
- Stream, lake: perennial; intermittent
- Reeds, kelp and small; bays, lagoons and small
- Area to be submerged: marsh, swamp
- Land subject to controlled inundation; woodland
- Scrub; mangrove
- Orchard; vineyard

A pamphlet describing topographic maps is available on request.



SCALE 1:100 000

1 CENTIMETER ON THE MAP REPRESENTS 1 KILOMETER ON THE GROUND  
CONTOUR INTERVAL 40 METERS  
SUPPLEMENTARY CONTOUR INTERVAL 20 METERS

CONDON, OREGON

1981