

Christmas Valley OREGON

1:100 000-scale metric
topographic map



30 X 60 MINUTE QUADRANGLE
SHOWING

- Contours and elevations in meters
- Highways, roads and other manmade structures
- Water features
- Woodland areas
- Geographic names



GEOLOGICAL SURVEY

1986
PHOTOINSPECTED 1990

Produced by the United States Geological Survey
Compiled from USGS 1:24 000-scale topographic maps dated 1981-1986 and other source data
Map edited 1986

North American Datum of 1927 (NAD 27). Projection and 10 000-meter grid: Universal Transverse Mercator, zone 10
25 000-foot ticks: Oregon coordinate system, south zone
The values of the shift between NAD 27 and North American Datum of 1983 (NAD 83) for 7.5-minute intersections are obtainable from National Geodetic Survey NADCON software
There may be private inholdings within the boundaries of the National or State reservations shown on this map
Map photoinspected using 1990 photography
No major culture or drainage changes found

CONTOUR INTERVAL 20 METERS
SUPPLEMENTARY CONTOUR INTERVAL 10 METERS
NATIONAL GEODETIC VERTICAL DATUM OF 1929
ELEVATIONS SHOWN TO THE NEAREST METER

THIS MAP COMPLIES WITH NATIONAL MAP ACCURACY STANDARDS

CONVERSION TABLE		DECLINATION DIAGRAM		ADJOINING MAPS		
Meters	Feet	1° 15'	1° 30'	1	2	3
1	3.2808			1	2	3
2	6.5617			4	5	
3	9.8425			6	7	
4	13.1234			8		
5	16.4042					
6	19.6850					
7	22.9659					
8	26.2467					
9	29.5276					
10	32.8084					

To convert meters to feet multiply by 3.2808
To convert feet to meters multiply by 0.3048

UTM grid convergence (GM) and 1983 magnetic declination (MD) at center of map
Diagram is approximate

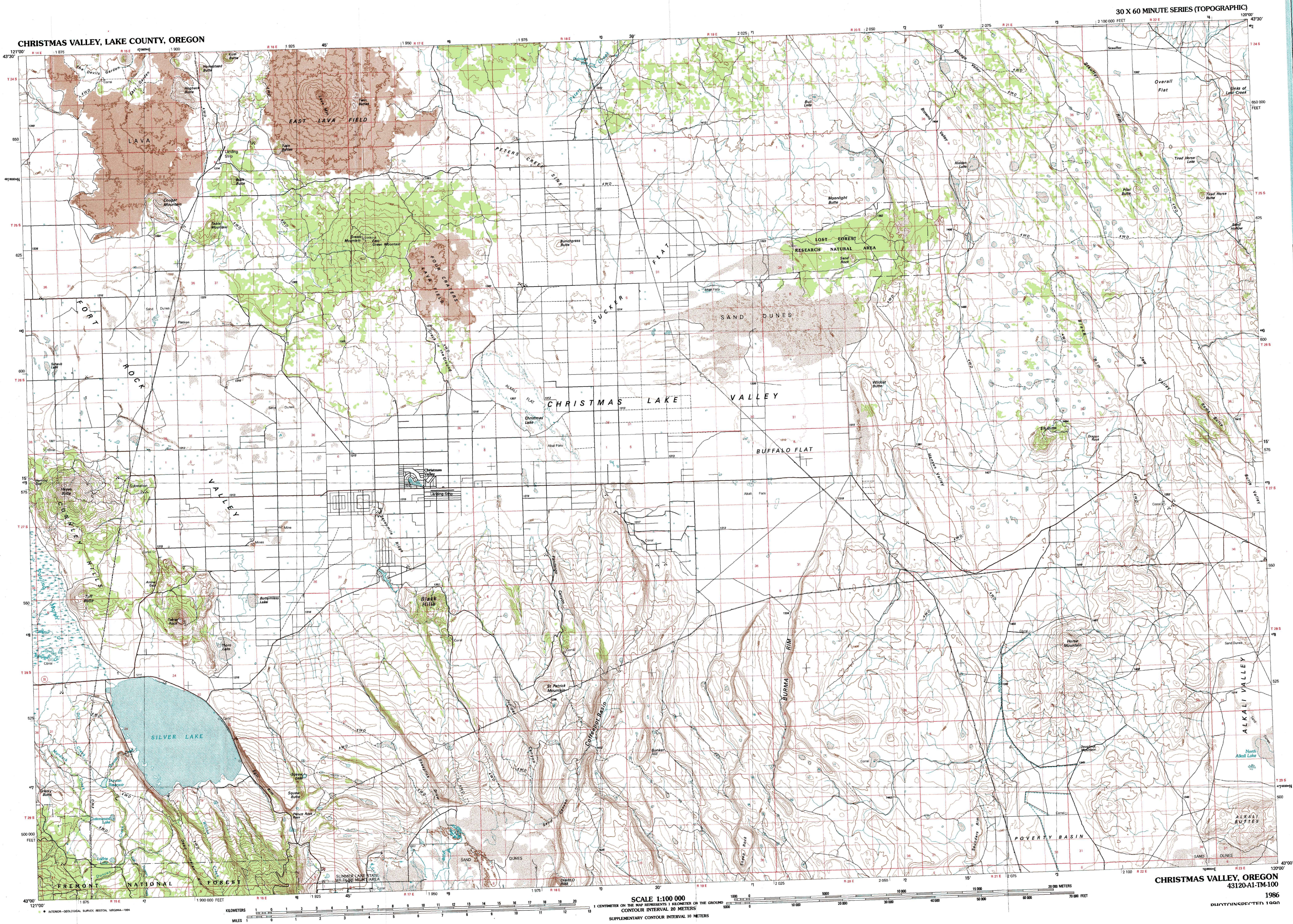
1 La Pine
2 Brothers
3 Burns
4 Crescent
5 Harney Lake
6 Williamson River
7 Lake Albert
8 Bluepoint Lake

FOR SALE BY U. S. GEOLOGICAL SURVEY, DENVER, COLORADO 80225
OR RESTON, VIRGINIA 22092

Topographic Map Symbols

- Primary highway, hard surface
- Secondary highway, hard surface
- Light duty road, principal street, hard or improved surface
- Other road or street, trail
- Route marker: interstate, U. S., State
- Railroad: standard gage, narrow gage
- Bridge: overpass, underpass
- Tunnel: road, railroad
- Built up area, locality, elevation
- Airport: landing field, landing strip
- National boundary
- State boundary
- County boundary
- National or State reservation boundary
- Land grant boundary
- U. S. public lands survey: range, township, section
- Range, township, section line: protected
- Power transmission line, pipeline
- Dam with lock
- Cemetery, building
- Windmill, water well, spring
- Mine shaft, adit or cave, mine, quarry, gravel pit
- Compassionate grave area, U. S. location monument
- Ruin, old dwelling
- Disturbed surface: strip mine, lava, sand
- Contours: index, intermediate, supplementary
- Bathymetric contours: index, intermediate
- Stream, lake, reservoir, intermittent
- Roads, large and small; hills, large and small
- Area to be submerged; marsh, swamp
- Land subject to controlled inundation; woodland
- Soak, mangrove
- Orchard, vineyard

A pamphlet describing topographic maps is available on request



CHRISTMAS VALLEY, OREGON
43120-A1-TM-100

1986
PHOTOINSPECTED 1990

SCALE 1:100 000
1 CENTIMETER ON THE MAP REPRESENTS 1 KILOMETER ON THE GROUND
CONTOUR INTERVAL 20 METERS
SUPPLEMENTARY CONTOUR INTERVAL 10 METERS

ANTERIOR-GEOLOGICAL SURVEY, RESTON, VIRGINIA-1984