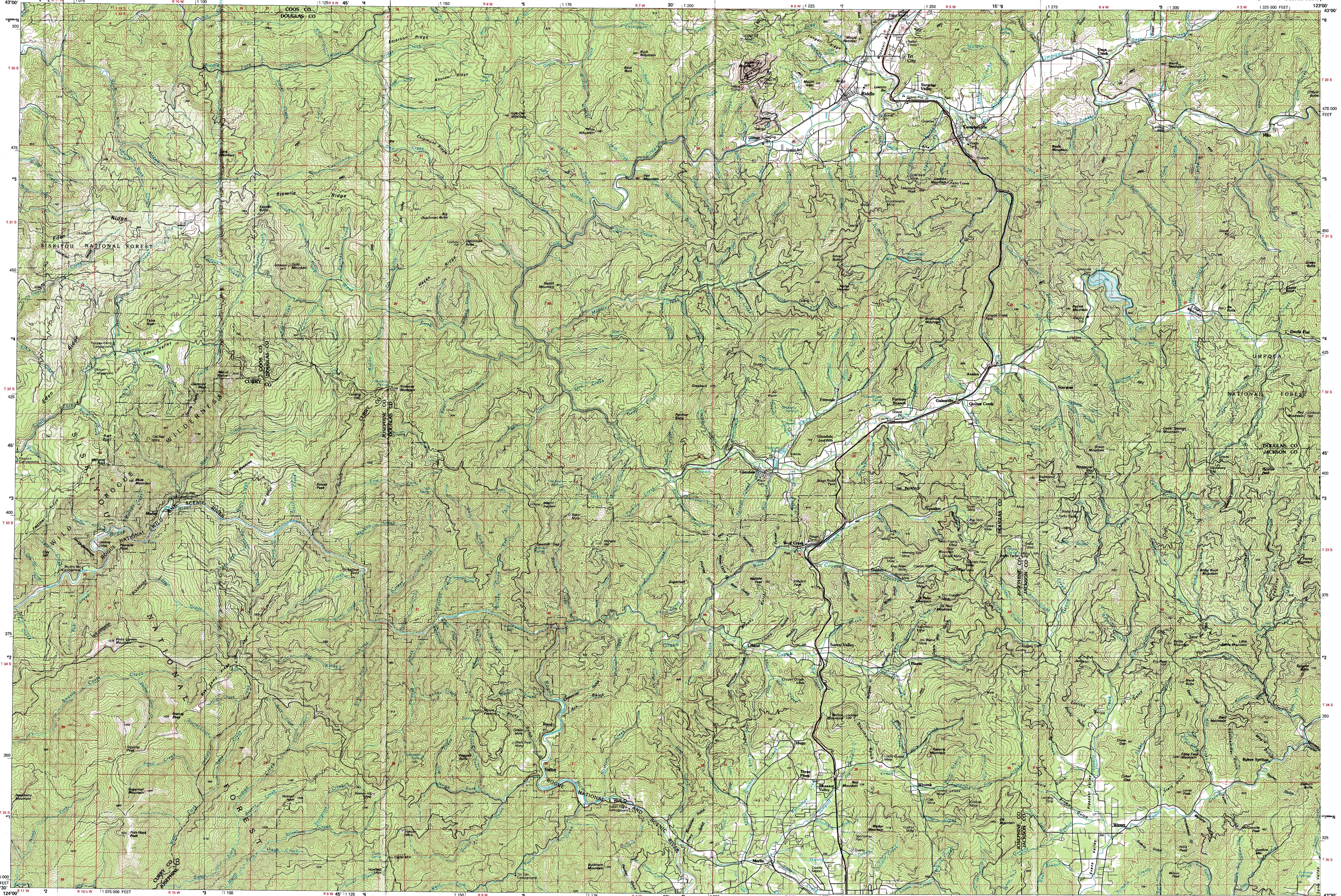


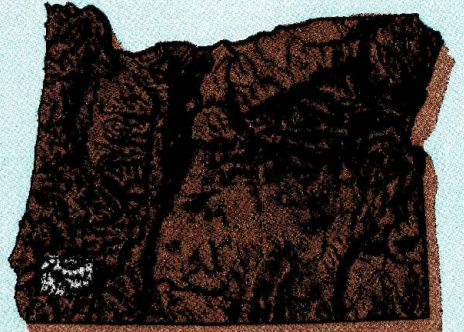
CANYONVILLE, OREGON

30X60 MINUTE SERIES (TOPOGRAPHIC)



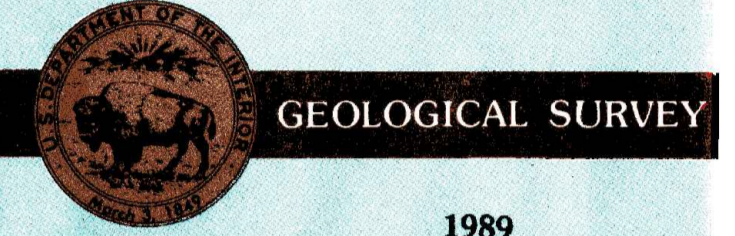
# Canyonville OREGON

1:100 000-scale metric topographic map



30 X 60 MINUTE QUADRANGLE SHOWING

- Contours and elevations in meters
- Highways, roads and other manmade structures
- Water features
- Woodland areas
- Geographic names



1989

Produced by the United States Geological Survey  
 Compiled from USGS 1:24 000 and 1:62 500-scale topographic maps dated 1946-1986. Planimetry revised from aerial photographs taken 1982 and other source data. Revised information not field checked. Map edited 1989.

Projection and 10 000-meter grid, zone 10  
 Universal Transverse Mercator  
 25 000-foot grid ticks based on Oregon coordinate system, south zone. 1927 North American Datum  
 To place on the predicted North American Datum 1983 move the projection lines 21 meters south and 97 meters east.

There may be private inholdings within the boundaries of the National or State reservations shown on this map.

CONTOUR INTERVAL 50 METERS  
 NATIONAL GEODETIC VERTICAL DATUM OF 1929  
 ELEVATIONS SHOWN TO THE NEAREST METER

CONVERSION TABLE		DECLINATION DIAGRAM		ADJOINING MAPS		
Meters	Feet	Diagram		1	2	3
1	3.2808			4		
2	6.5615			5		
3	9.8423			6	7	8
4	13.1230					
5	16.4037					
6	19.6845					
7	22.9652					
8	26.2460					
9	29.5267					
10	32.8075					

To convert meters to feet multiply by 3.2808  
 To convert feet to meters multiply by 0.3048

UTM grid convergence (GN) and 1983 magnetic declination (MG) at center of map. Diagram is approximate.

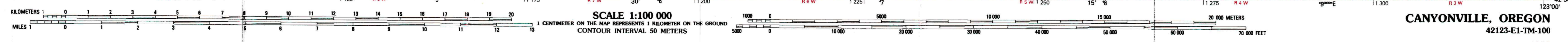
1 Coos Bay  
 2 Diamond Lake  
 3 Port Clifton  
 4 Crane Lake  
 5 Gold Beach  
 6 Grants Pass  
 7 Medford

FOR SALE BY U. S. GEOLOGICAL SURVEY, DENVER, COLORADO 80225  
 OR RESTON, VIRGINIA 22092

### Topographic Map Symbols

- Primary highway, hard surface
- Secondary highway, hard surface
- Light duty road, principal street, hard or improved surface
- Other road or street, trail
- Road marker, Interstate, U. S. State
- Railroad, standard gage, narrow gage
- Bridge, overpass, underpass
- Tunnel, road, railroad
- Built up area, locality, elevation
- Airport, landing field, landing strip
- National boundary
- State boundary
- County boundary
- National or State reservation boundary
- Land grant boundary
- U. S. public lands survey, range, township, section
- Range, township, section line, protected
- Power transmission line, pipeline
- Dam, dam with lock
- Cemetery, building
- Wellhead, water well, spring
- Mine shaft, adit or cave, mine, quarry, gravel pit
- Campground, picnic area, U. S. location monument
- Rails, cliff dwelling
- Distorted surface: strip mine, lava, sand
- Contours: index, intermediate, supplementary
- Bathymetric contours: index, intermediate
- Stream, lake, perennial, intermittent
- Rapids, ledge and snail, falls, large and small
- Area to be submerged; marsh, swamp
- Land subject to controlled inundation; woodland
- Scrub; mangrove
- Orchard; vineyard

A pamphlet describing topographic maps is available on request.



CANYONVILLE, OREGON  
 42123-E1-TM-100  
 1989