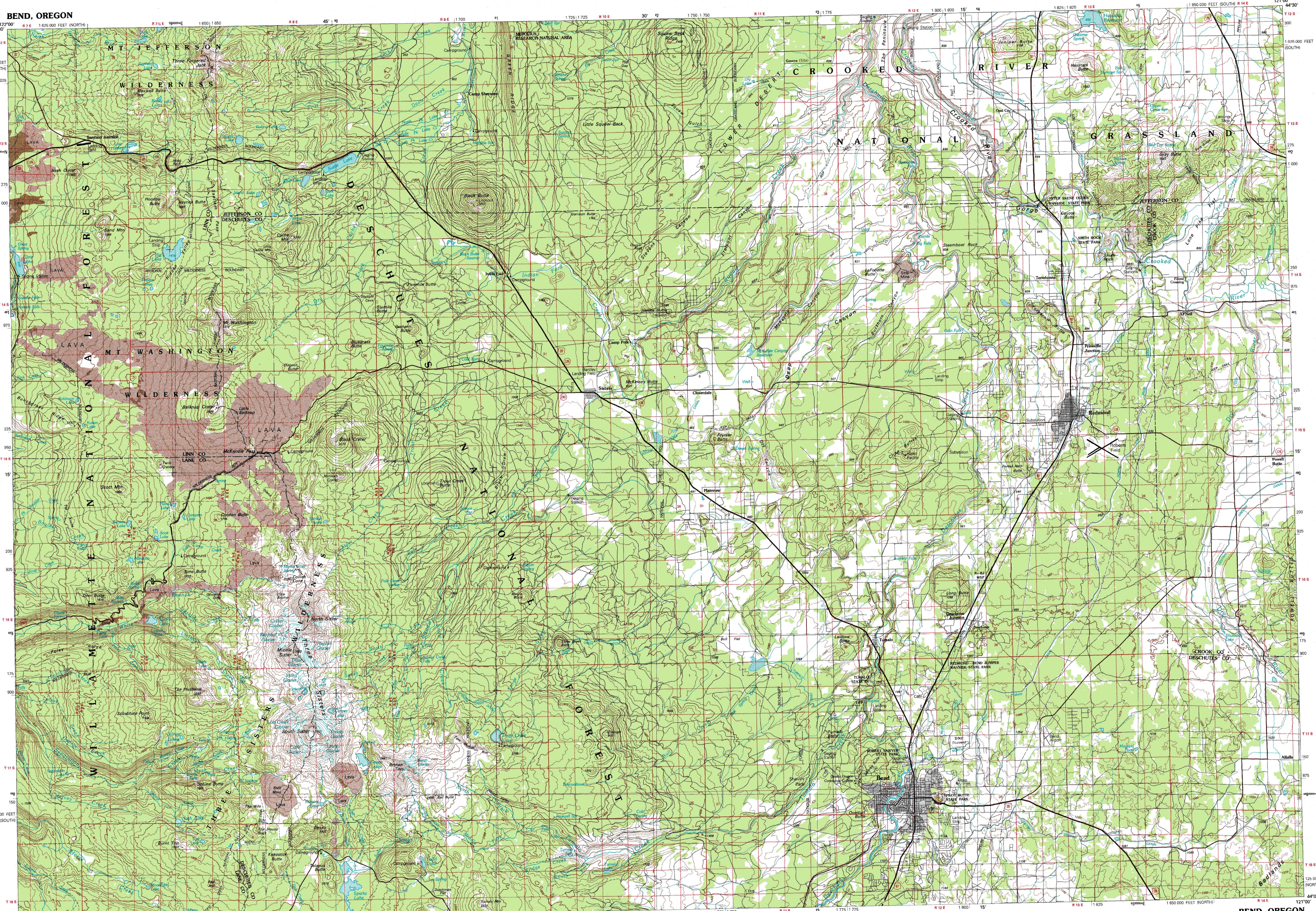


BEND, OREGON

30X60 MINUTE SERIES (TOPOGRAPHIC)



Bend OREGON
 1:100 000-scale metric topographic map

30 X 60 MINUTE QUADRANGLE SHOWING

- Contours and elevations in meters
- Highways, roads and other manmade structures
- Water features
- Woodland areas
- Geographic names

GEOLOGICAL SURVEY
 1980
 PHOTOINSPECTED 1991

Produced by the United States Geological Survey
 Compiled from USGS 1:24 000 and 1:62 500-scale topographic maps dated 1959-75. Photoinspected 1991.
 1927 North American Datum (NAD 27). Projection and 10 000-meter grid: Universal Transverse Mercator, zone 10
 25 000-foot ticks: Oregon coordinate system, south and north zone

The difference between NAD 27 and North American Datum of 1983 (NAD 83) is too small to show at this scale. The values of the shift between the datums for 7.5-minute intersections are given in USGS Bulletin 1875
 There may be private holdings within the boundaries of the National or State reservations shown on this map
 Protected land lines are dashed
 Map photoinspected using 1990-91 photographs
 No major culture or drainage changes found

CONTOUR INTERVAL 40 METERS
 SUPPLEMENTARY CONTOUR INTERVAL 10 METERS
 NATIONAL GEODETIC VERTICAL DATUM OF 1929

CONVERSION TABLE		DECLINATION DIAGRAM		ADJOINING MAPS		
Meters	Feet	Diagram		1	2	3
1	3.2808			1	2	3
2	6.5616			4	5	6
3	9.8424			7	8	
4	13.1232					
5	16.4040					
6	19.6848					
7	22.9656					
8	26.2464					
9	29.5272					
10	32.8080					

To convert meters to feet multiply by 3.2808
 To convert feet to meters multiply by 0.3048

UTM grid convergence (GN) at 1980 magnetic declination (MD) at center of map Diagram is approximate

1 North-South River
 2 Madras
 3 Madras Mountain
 4 McKenzie River
 5 Prineville
 6 Chalmers
 7 Lufkin
 8 Bowers

FOR SALE BY U. S. GEOLOGICAL SURVEY, DENVER, COLORADO 80225 OR RESTON, VIRGINIA 22092

Topographic Map Symbols

Primary highway, hard surface	
Secondary highway, hard surface	
Light duty road, principal street, hard or improved surface	
Other road or street, trail	
Route marker: Interstate, U. S., State	
Railroad: standard gage; narrow gage	
Bridge; overpass; underpass	
Tunnel: road; railroad	
Built up area; locality; elevation	
Airport; landing field; landing strip	
National boundary	
State boundary	
County boundary	
National or State reservation boundary	
Land grant boundary	
U. S. public lands survey: range, township, section	
Range, township; section line; protected	
Power transmission line; pipeline	
Dam; dam with lock	
Cemetery; building	
Well; water well; spring	
Mine shaft; salt or gravel mine; quarry; gravel pit	
Campground; picnic area; U. S. location monument	
Ruin; cliff dwelling	
Distorted surface: strip mine, lava, sand	
Contours: index; intermediate; supplementary	
Bathymetric contours: index; intermediate	
Stream, lake; perennial; intermittent	
Rapids; ledge and small falls; ledge and small	
Area to be submerged; marsh, swamp	
Land subject to controlled inundation; woodland	
Scrub; mangrove	
Orchard; vineyard	

A pamphlet describing topographic maps is available on request

SCALE 1:100 000
 1 CENTIMETER ON THE MAP REPRESENTS 1 KILOMETER ON THE GROUND
 CONTOUR INTERVAL 40 METERS
 SUPPLEMENTARY CONTOUR INTERVAL 10 METERS

BEND, OREGON
 44121-A1-TM-100
 1980
 PHOTOINSPECTED 1991