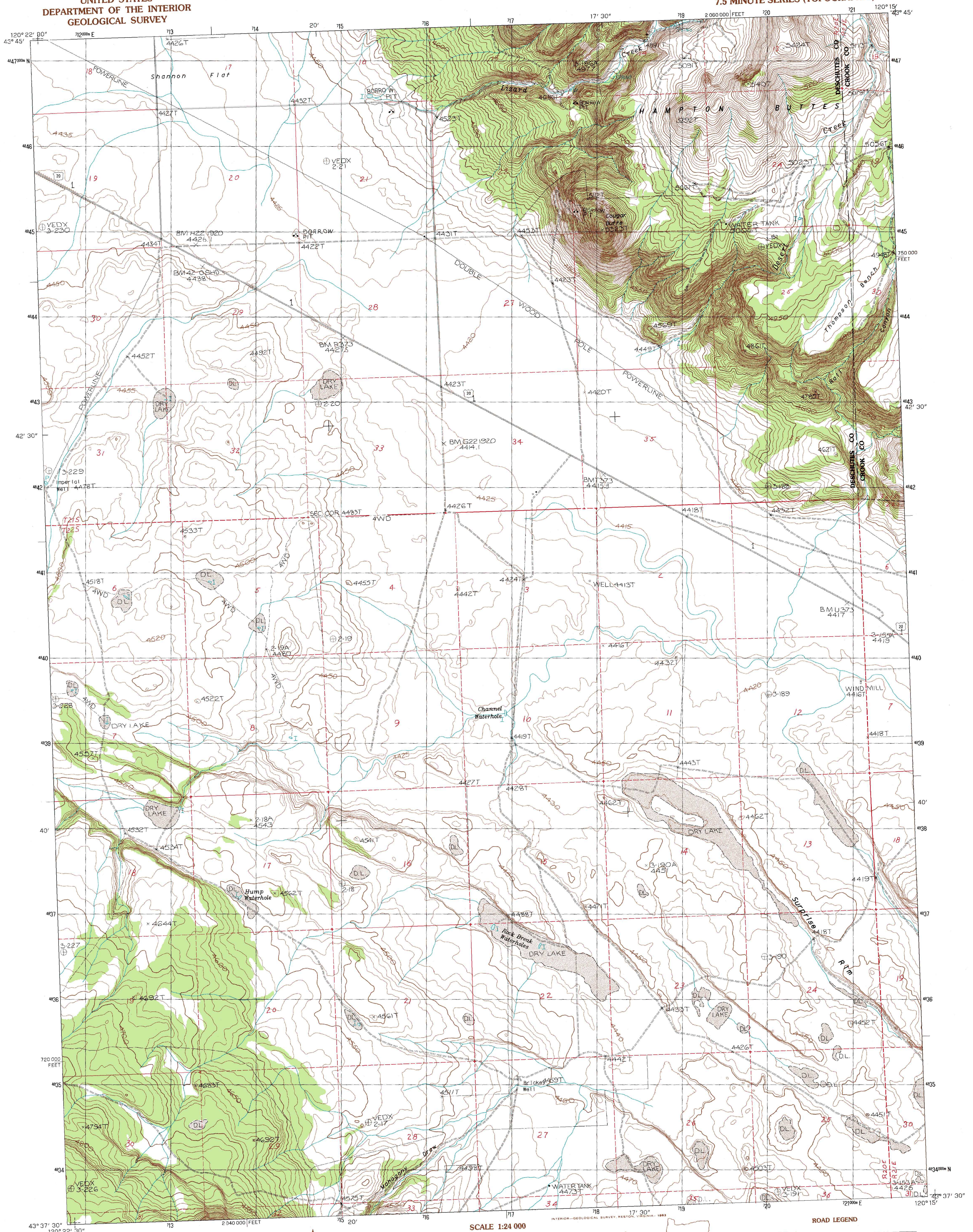


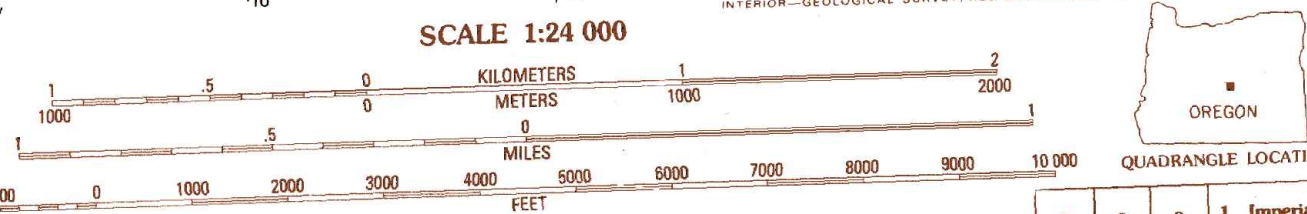
UNITED STATES
DEPARTMENT OF THE INTERIOR
GEOLOGICAL SURVEY

WEST OF HAMPTON QUADRANGLE
OREGON
7.5 MINUTE SERIES (TOPOGRAPHIC)



PRODUCED BY THE UNITED STATES GEOLOGICAL SURVEY
CONTROL BY U.S.G.S. NIS/NOAA 1974 AND 1976
COMPILED FROM AERIAL PHOTOGRAPHS TAKEN 1983
FIELD CHECKED 1980. MAP EDITED LAMBERT CONFORMAL CONIC
PROJECTION 1983. U.S.G.S. NIS/NOAA
GRID: 100-METER UNIVERSAL TRANSVERSE MERCATOR, ZONE 10
10,000-FOOT STATE GRID TICKS OREGON SOUTH ZONE
UTM GRID DECLINATION 1983 EAST
1980 MAGNETIC NORTH DECLINATION 1980 EAST
VERTICAL DATUM: NATIONAL GEODESIC VERTICAL DATUM OF 1929
HORIZONTAL DATUM: 1927 NORTH AMERICAN DATUM
To place on the predicted North American Datum of 1983,
move the projection lines as shown by dashed corner ticks
(19 meters north / 89 meters east)
There may be private inholdings within the boundaries of any
Federal and State Reservations shown on this map

PROVISIONAL MAP
Produced from original
manuscript drawings. Informa-
tion shown as of date of
field check.



SCALE 1:24 000
CONTOUR INTERVAL 10 FEET
SUPPLEMENTARY CONTOUR INTERVAL 5 FEET
To convert meters to feet multiply by 3.2808
To convert feet to meters multiply by 0.3048

QUADRANGLE LOCATION

1	2	3	4	5	6	7	8
Imperial Valley N.	Hampton Butte	Long Ben	Imperial Valley S.	Hampton	Frederick Butte	Benjamin Lake	Potato Lake

ADJOINING 7.5' QUADRANGLE NAMES

ROAD LEGEND
Improved Road
Unimproved Road
Trail
Interstate Route U.S. Route State Route

WEST OF HAMPTON, OREG.
PROVISIONAL EDITION 1983
43120-F3-TF-024