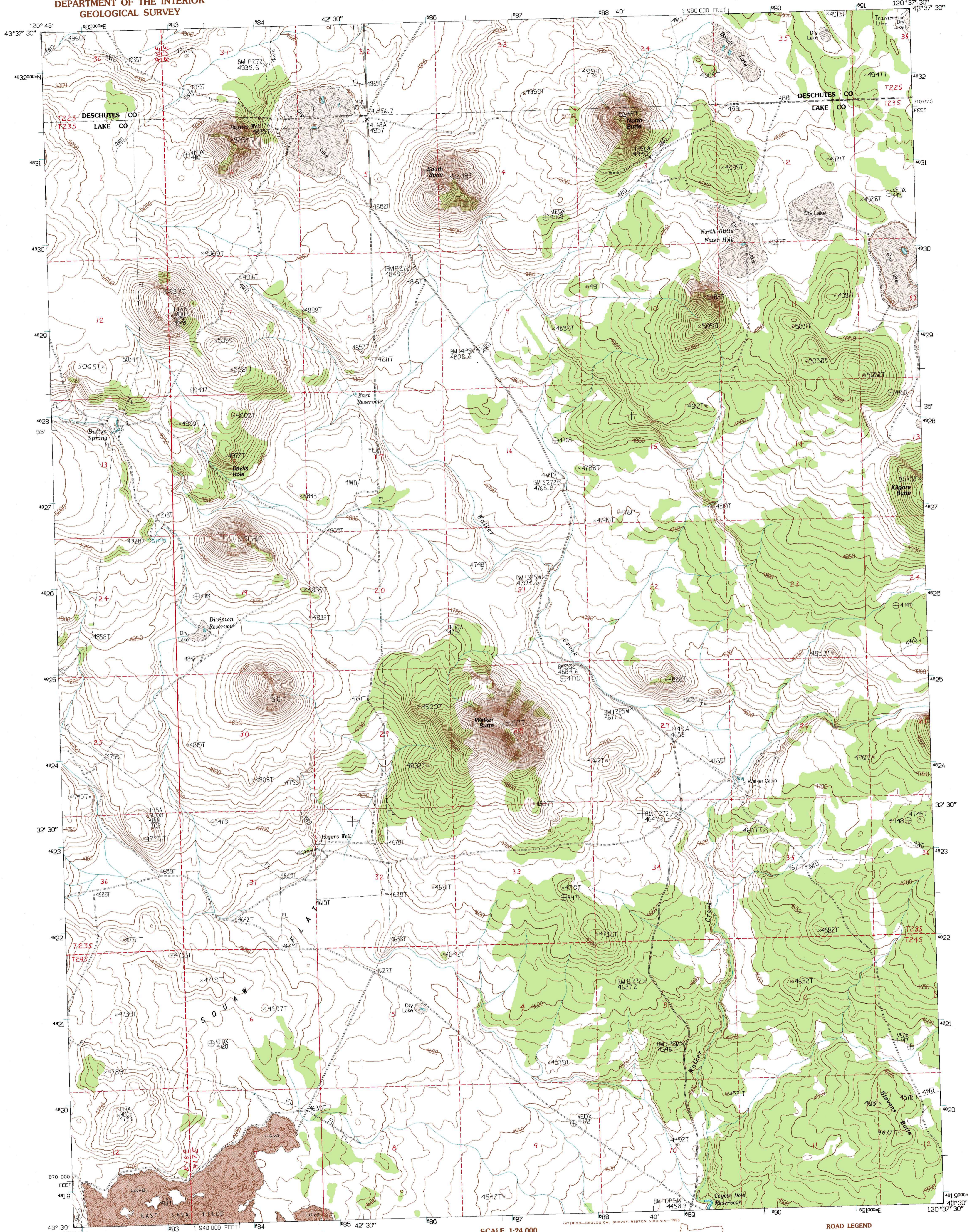


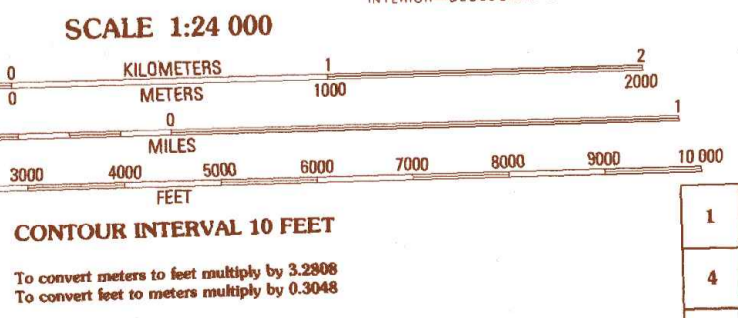
UNITED STATES
DEPARTMENT OF THE INTERIOR
GEOLOGICAL SURVEY

WALKER BUTTE QUADRANGLE
OREGON
7.5 MINUTE SERIES (TOPOGRAPHIC)



PRODUCED BY THE UNITED STATES GEOLOGICAL SURVEY
CONTROL BY USGS, NOS/NOAA
COMPILED FROM AERIAL PHOTOGRAPHS TAKEN 1974 AND 1976
FIELD CHECKED 1980. MAP EDITED 1983
PROJECTION 1980. MAP EDITED 1983
BLUE 1000-METER UNIVERSAL TRANSVERSE MERCATOR TICS, ZONE 10
10 000-FOOT STATE GRID TICKS OREGON, SOUTH ZONE
UTM GRID DECLINATION 18°30' EAST
VERTICAL DATUM NATIONAL GEODETIC VERTICAL DATUM OF 1929
HORIZONTAL DATUM NORTH AMERICAN DATUM OF 1927 (NAD 27)
North American Datum of 1983 (NAD 83) is shown by
dashed corner ticks. The values of the shift between NAD
27 and NAD 83 for 7.5-minute intersections are obtainable
from National Geodetic Survey NADCON software
There may be private inholdings within the boundaries of
any Federal and State reservations shown on this map

PROVISIONAL MAP
Produced from original
manuscript drawings. Informa-
tion shown as of date of
field check.



ROAD LEGEND

Improved Road.....
Unimproved Road.....
Trail.....
Interstate Route U.S. Route State Route

WALKER BUTTE, OR
PROVISIONAL EDITION 1983

43120-E6-TF-024

| | | | | |
|---|---|---|---|-------------------|
| 1 | 2 | 3 | 1 | Pilot Butte |
| 2 | 3 | 4 | 2 | Dickerson Flat |
| 3 | 4 | 5 | 3 | Soldiers Cap |
| 4 | 5 | 6 | 4 | Fox Butte |
| 5 | 6 | 7 | 5 | Lost Chance Lake |
| 6 | 7 | 8 | 6 | Hogback Butte |
| 7 | 8 | | 7 | Jacks Place |
| 8 | | | 8 | Peters Creek Sink |

ADJOINING 7.5 QUADRANGLE NAMES

THIS MAP COMPLIES WITH NATIONAL MAP ACCURACY STANDARDS
FOR SALE BY U. S. GEOLOGICAL SURVEY, DENVER, COLORADO 80225, OR RESTON, VIRGINIA 22092