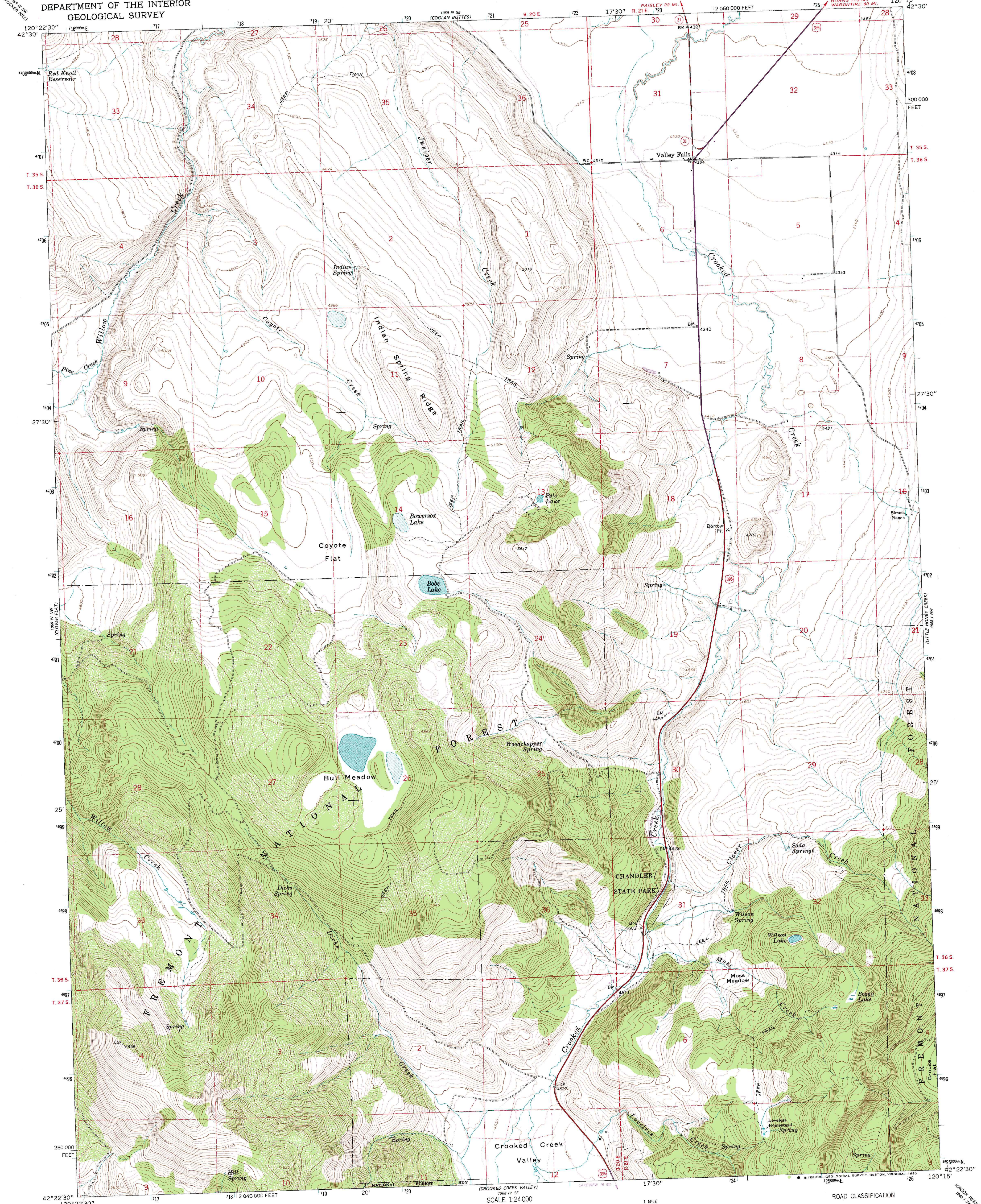
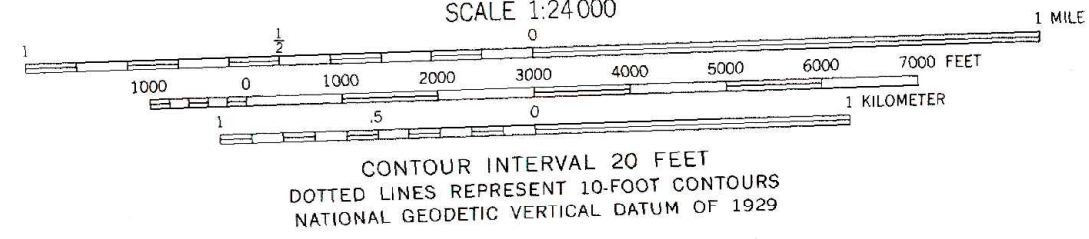
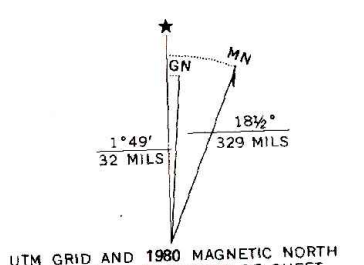


VALLEY FALLS QUADRANGLE
OREGON-LAKE CO.
7.5 MINUTE SERIES (TOPOGRAPHIC)

UNITED STATES
DEPARTMENT OF THE INTERIOR
GEOLOGICAL SURVEY



Mapped, edited, and published by the Geological Survey
Control by USGS, NOS/NOAA and State of Oregon
Topography by photogrammetric methods from aerial
photographs taken 1960. Field checked 1964
Polyconic projection. 1927 North American datum
10,000-foot grid based on Oregon coordinate system,
south zone.
1000-meter Universal Transverse Mercator grid ticks,
zone 10, shown in blue
To place on the predicted North American Datum 1983
move the projection lines 18 meters north and
88 meters east as shown by dashed corner ticks
There may be private inholdings within the boundaries of
the National or State reservations shown on this map
Where omitted, land lines have not been established



ROAD CLASSIFICATION

Heavy-duty	Light-duty
Medium-duty	Unimproved dirt
U.S. Route	State Route

THIS MAP COMPLIES WITH NATIONAL MAP ACCURACY STANDARDS
FOR SALE BY U.S. GEOLOGICAL SURVEY, DENVER, COLORADO 80225, OR RESTON, VIRGINIA 22092
A FOLDER DESCRIBING TOPOGRAPHIC MAPS AND SYMBOLS IS AVAILABLE ON REQUEST

Revisions shown in purple compiled from aerial photographs
taken 1979 and other source data. This information not
field checked. Map edited 1980

VALLEY FALLS, OREG.
N42225-W12015/7.5
1964
PHOTOREVISED 1980
DMA 1968 IV NE-SERIES V892