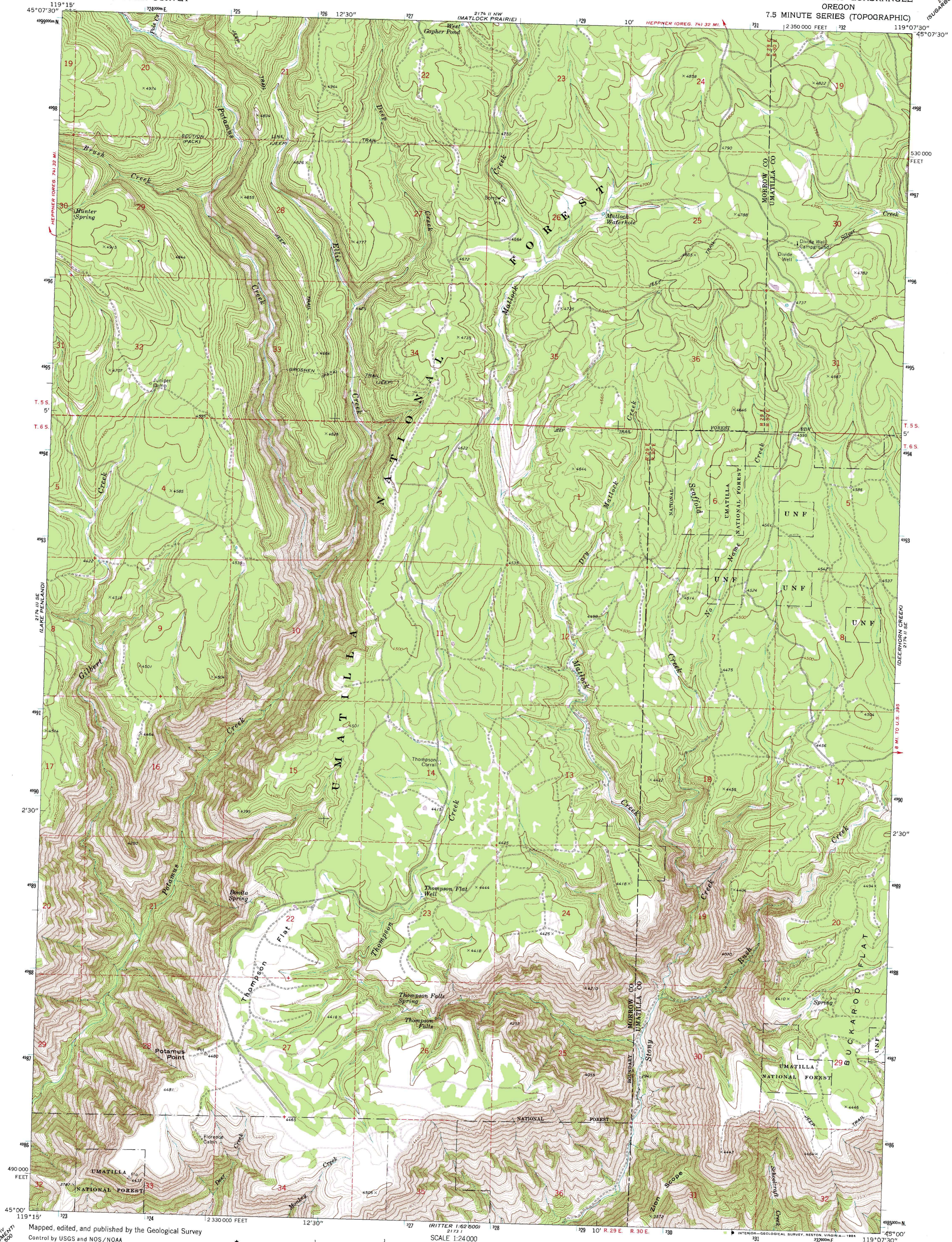


UNITED STATES  
DEPARTMENT OF THE INTERIOR  
GEOLOGICAL SURVEY

THOMPSON FLAT QUADRANGLE  
OREGON  
7.5 MINUTE SERIES (TOPOGRAPHIC)



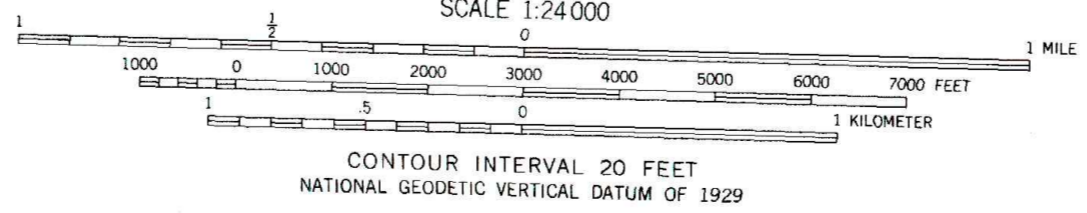
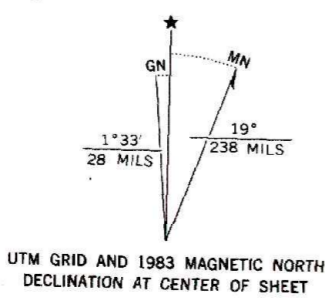
Mapped, edited, and published by the Geological Survey  
Control by USGS and NOS/NOAA

Topography by photogrammetric methods from aerial  
photographs taken 1967. Field checked 1969

Polyconic projection. 1927 North American Datum  
10,000-foot grid based on Oregon coordinate system,  
1000-meter Universal Transverse Mercator grid ticks,  
zone 11, shown in blue

To place on the predicted North American Datum 1983  
move the projection lines 19 meters north and  
85 meters east as shown by dashed corner ticks

There may be private inholdings within the boundaries  
of the National or State reservations shown on this map



**ROAD CLASSIFICATION**

Primary highway, hard surface	Light-duty road, hard or improved surface
Secondary highway, hard surface	Unimproved road
Interstate Route	U. S. Route
	State Route



THIS MAP COMPLIES WITH NATIONAL MAP ACCURACY STANDARDS  
FOR SALE BY U. S. GEOLOGICAL SURVEY, DENVER, COLORADO 80225, OR RESTON, VIRGINIA 22092  
A FOLDER DESCRIBING TOPOGRAPHIC MAPS AND SYMBOLS IS AVAILABLE ON REQUEST

**THOMPSON FLAT, OREG.**  
45119-A2-TF-024

Revisions shown in purple and woodland compiled from  
aerial photographs taken 1981 and other source data  
Partial field check by U. S. Forest Service. Map edited 1983  
1969  
PHOTOREVISED 1983  
DMA 2174 II SW—SERIES V892