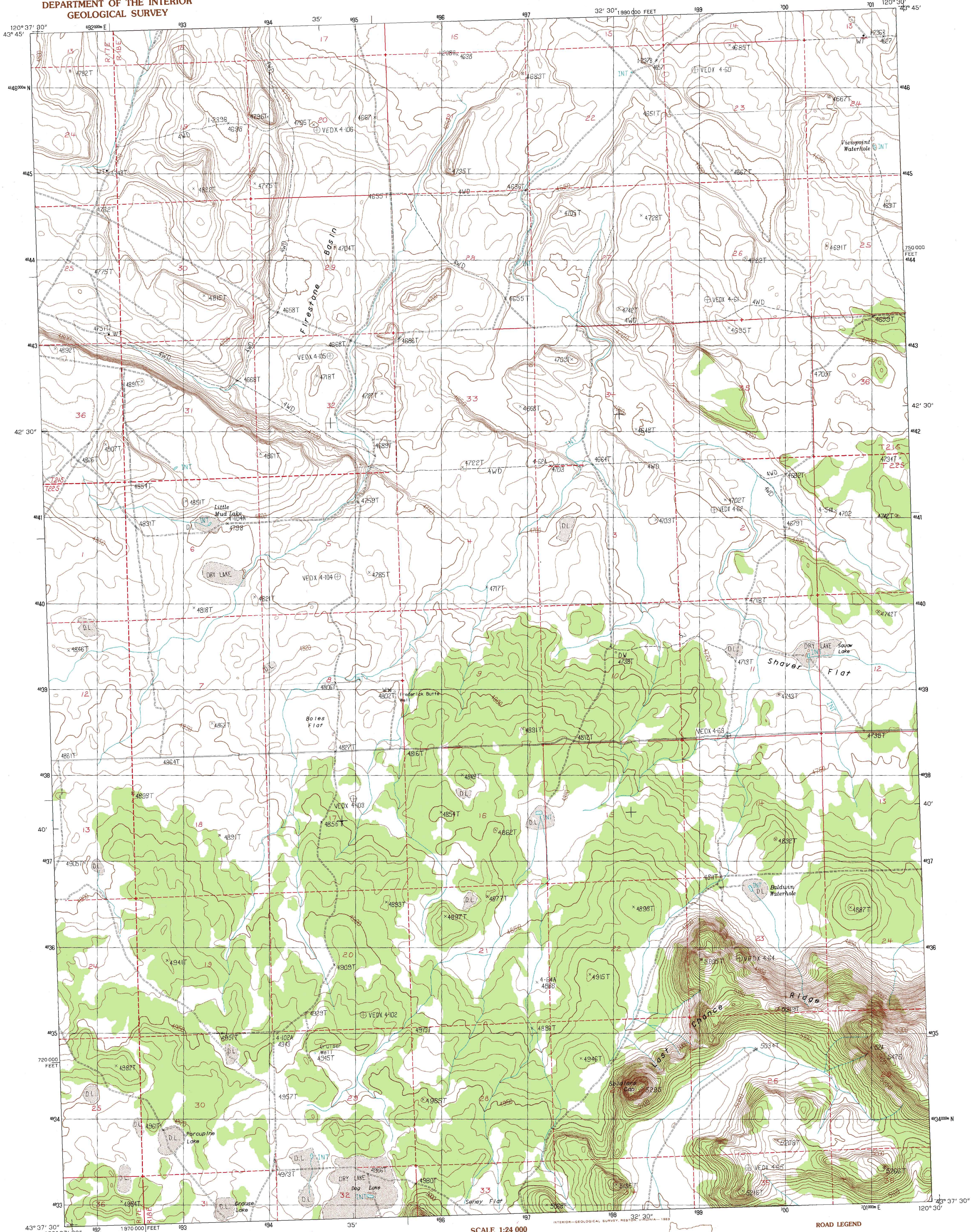


UNITED STATES  
DEPARTMENT OF THE INTERIOR  
GEOLOGICAL SURVEY

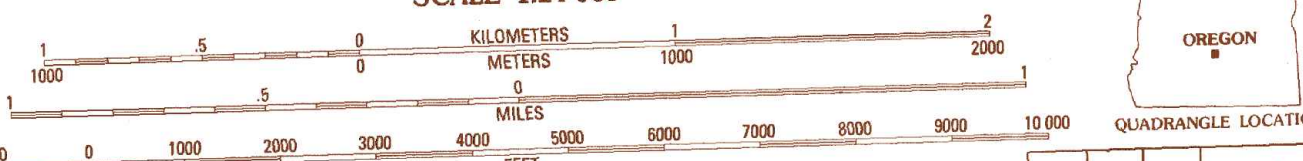
SOLDIERS CAP QUADRANGLE  
OREGON—DESCHUTES CO.  
7.5 MINUTE SERIES (TOPOGRAPHIC)



PRODUCED BY THE UNITED STATES GEOLOGICAL SURVEY  
CONTROL BY THE UNITED STATES GEOLOGICAL SURVEY  
COMPILED FROM AERIAL PHOTOGRAPHS TAKEN 1976  
FIELD CHECKED 1980. MAP EDITED 1983  
PROJECTION LAMBERT CONFORMAL CONIC  
GRID: 1000-METER UNIVERSAL TRANSVERSE MERCATOR... ZONE 10  
10,000-FOOT STATE GRID TICKS... OREGON, SOUTH ZONE  
UTM GRID DECLINATION 1911 EAST  
1980 MAGNETIC NORTH DECLINATION 18°30' EAST  
VERTICAL DATUM NATIONAL GEODETIC VERTICAL DATUM OF 1929  
HORIZONTAL DATUM 1927 NORTH AMERICAN DATUM  
To place on the predicted North American Datum of 1983,  
move the projection lines as shown by dashed corner ticks  
(19 meters north / 90 meters east)  
There may be private inholdings within the boundaries of any  
Federal and State Reservations shown on this map

**PROVISIONAL MAP**  
Produced from original  
manuscript drawings. Infor-  
mation shown as of date of  
field check.

SCALE 1:24 000



CONTOUR INTERVAL 10 FEET  
To convert meters to feet multiply by 3.2808  
To convert feet to meters multiply by 0.3048



QUADRANGLE LOCATION

1	2	3
4	5	6
7	8	

ADJOINING 7.5' QUADRANGLE NAMES

- ROAD LEGEND
- Improved Road.....
  - Unimproved Road.....
  - Trail.....
  - Interstate Route
  - U.S. Route
  - State Route

**SOLDIERS CAP, OREG.**  
PROVISIONAL EDITION 1983

43120-F5-024