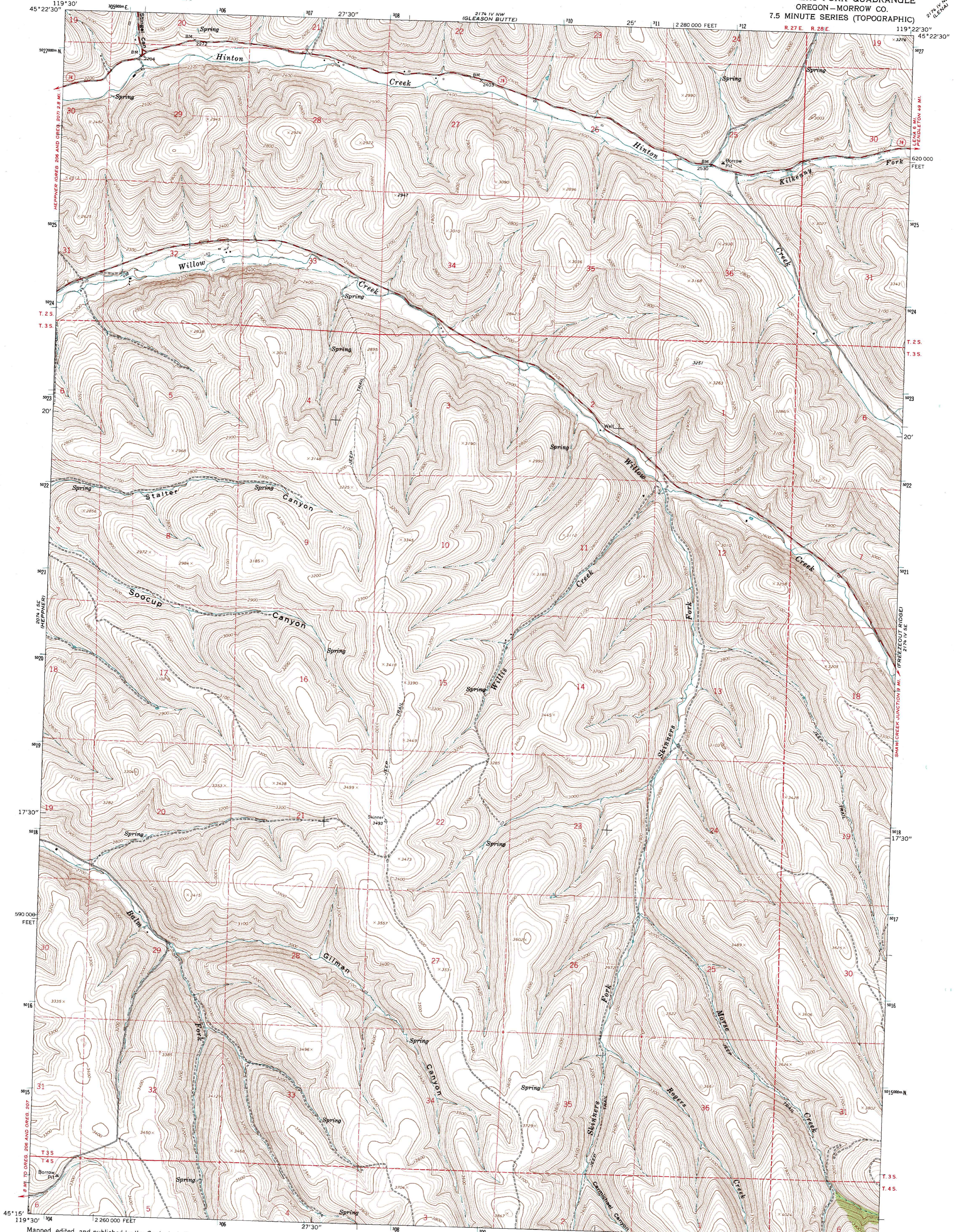
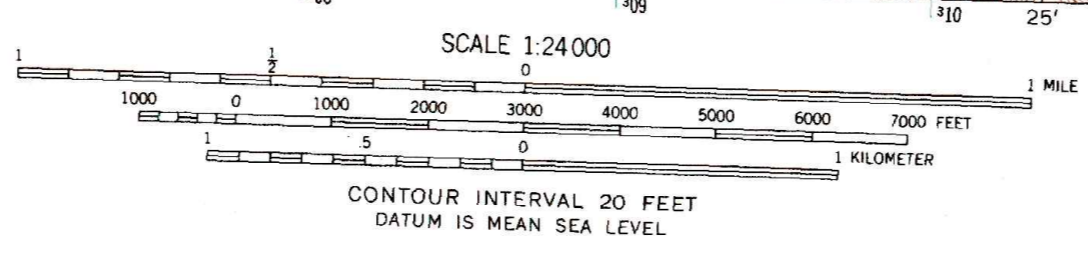
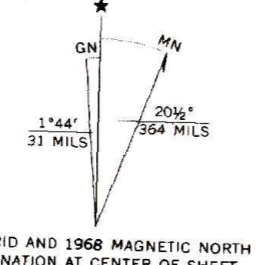


UNITED STATES
DEPARTMENT OF THE INTERIOR
GEOLOGICAL SURVEY

SKINNERS FORK QUADRANGLE
OREGON—MORROW CO.
7.5 MINUTE SERIES (TOPOGRAPHIC)



Mapped, edited, and published by the Geological Survey
Control by USGS and USC&GS
Topography by photogrammetric methods from aerial
photographs taken 1965. Field checked 1968
Polyconic projection. 1927 North American datum
10,000-foot grid based on Oregon coordinate system,
north zone
1000-meter Universal Transverse Mercator grid ticks,
zone 11, shown in blue
Fine red dashed lines indicate selected fence lines



ROAD CLASSIFICATION
 Medium-duty ——— Light-duty ———
 Unimproved dirt - - - - -
 State Route ○

THIS MAP COMPLIES WITH NATIONAL MAP ACCURACY STANDARDS.
FOR SALE BY U.S. GEOLOGICAL SURVEY, DENVER, COLORADO 80225, OR WASHINGTON, D.C. 20242
A FOLDER DESCRIBING TOPOGRAPHIC MAPS AND SYMBOLS IS AVAILABLE ON REQUEST

SKINNERS FORK, OREG.
N4515—W11922.5/7.5

1968

AMS 2174 IV SW—SERIES V892