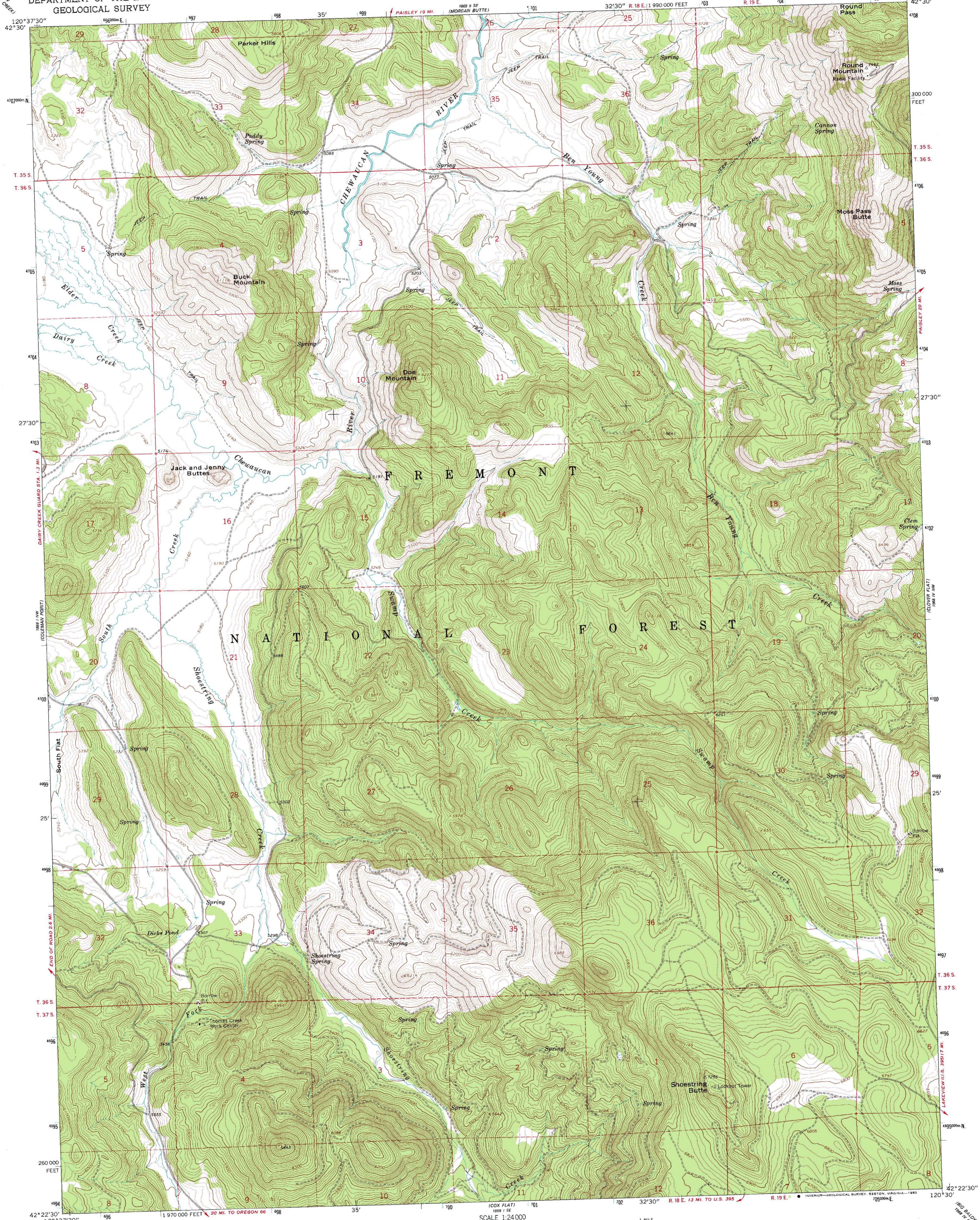
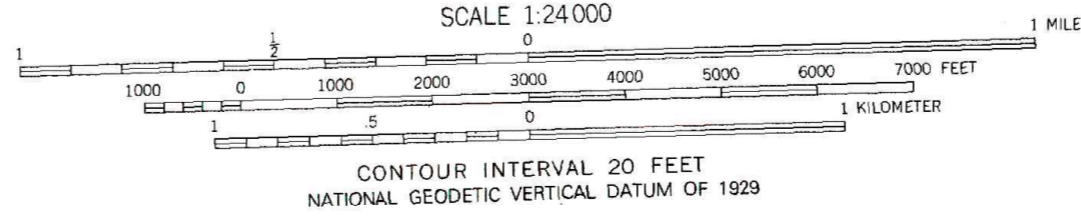
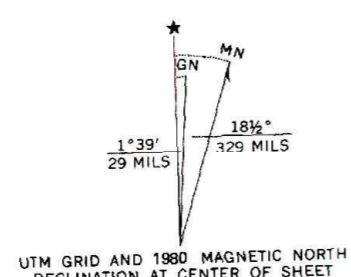


UNITED STATES  
DEPARTMENT OF THE INTERIOR  
GEOLOGICAL SURVEY

SHOESTRING BUTTE QUADRANGLE  
OREGON-LAKE CO.  
7.5 MINUTE SERIES (TOPOGRAPHIC)



Mapped, edited, and published by the Geological Survey  
Control by USGS and NOS/NOAA  
Topography by photogrammetric methods from aerial photographs taken 1960. Field checked 1964  
Polyconic projection. 1927 North American datum  
10,000-foot grid based on Oregon coordinate system, south zone  
1000-meter Universal Transverse Mercator grid ticks, zone 10, shown in blue  
To place on the predicted North American Datum 1983 move the projection lines 18 meters north and 89 meters east as shown by dashed corner ticks  
Where omitted, land lines have not been established  
There may be private inholdings within the boundaries of the National or State reservations shown on this map



ROAD CLASSIFICATION  
Light-duty ———— Unimproved dirt - - - - -

SHOESTRING BUTTE, OREG.  
N4222.5—W12030.7.5

THIS MAP COMPLIES WITH NATIONAL MAP ACCURACY STANDARDS  
FOR SALE BY U. S. GEOLOGICAL SURVEY, DENVER, COLORADO 80225, OR RESTON, VIRGINIA 22092  
A FOLDER DESCRIBING TOPOGRAPHIC MAPS AND SYMBOLS IS AVAILABLE ON REQUEST

Revisions shown in purple compiled from aerial photographs taken 1979 and other source data. This information not field checked. Map edited 1980

1964  
PHOTOREVISED 1980  
DMA 1868 I NE—SERIES V892