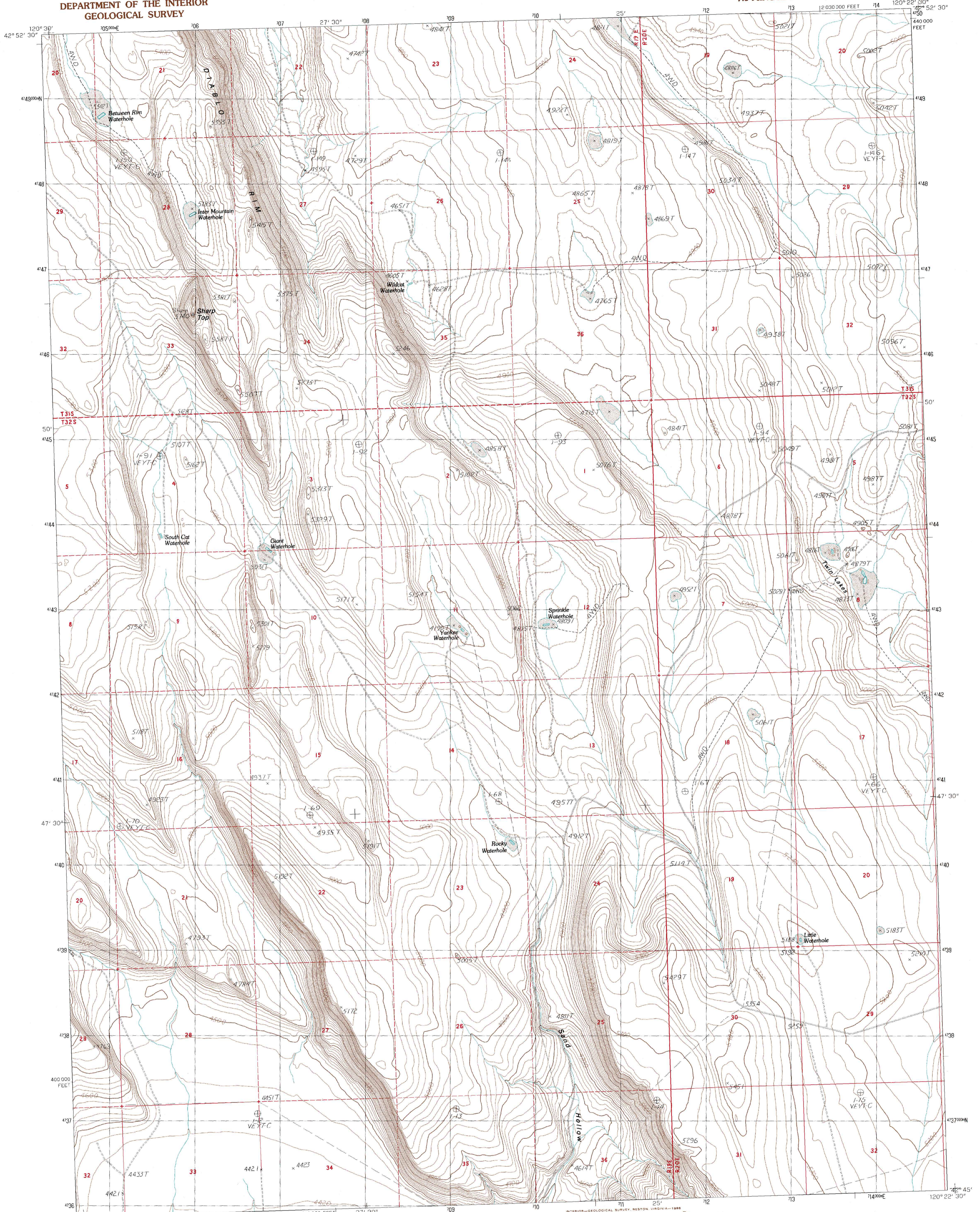


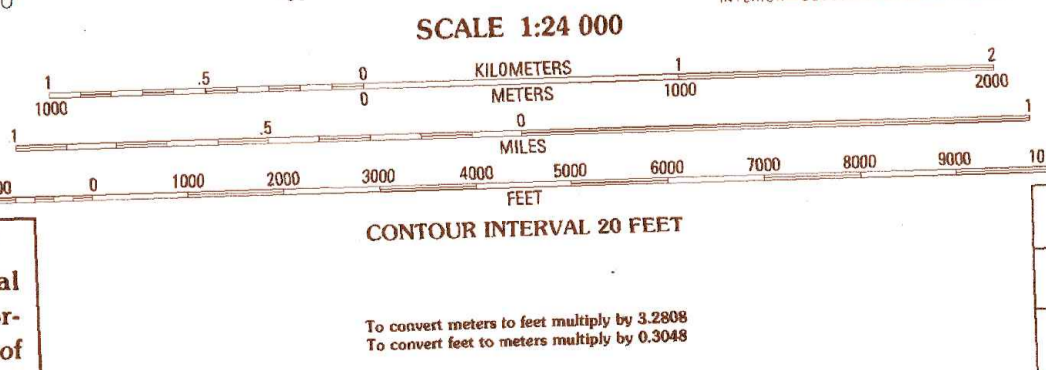
UNITED STATES
DEPARTMENT OF THE INTERIOR
GEOLOGICAL SURVEY

SHARP TOP QUADRANGLE
OREGON—LAKE CO.
7.5 MINUTE SERIES (TOPOGRAPHIC)



PRODUCED BY THE UNITED STATES GEOLOGICAL SURVEY
CONTROL BY USGS, NOS/NOAA, 1980
COMPILED FROM AERIAL PHOTOGRAPHS TAKEN 1985
FIELD CHECKED 1981, MAP EDITED 1985
PROJECTION LAMBERT CONFORMAL CONIC
GRID: 1000-METER UNIVERSAL TRANSVERSE MERCATOR ZONE 10
10,000-FOOT STATE GRID TICKS OREGON, SOUTH ZONE
UTM GRID DECLINATION 1948 EAST
1985 MAGNETIC NORTH DECLINATION 18° EAST
VERTICAL DATUM NATIONAL GEODETIC VERTICAL DATUM OF 1929
HORIZONTAL DATUM 1927 NORTH AMERICAN DATUM
To place on the predicted North American Datum of 1983,
move the projection lines as shown by dashed corner ticks
(18 meters north / 89 meters east)
There may be private inholdings within the boundaries of any
Federal and State Reservations shown on this map

PROVISIONAL MAP
Produced from original
manuscript drawings. Infor-
mation shown as of date of
field check.



ROAD LEGEND

Improved Road.....
Unimproved Road.....
Trail.....
Interstate Route.....
U.S. Route.....
State Route.....

1	2	3	4	5	6	7	8
Diablo Peak	Bull Lake	Diatomite Reservoir	Loco Lake	Biscuit Point	Paisley	Coglan Buttes	Coglan Buttes NE

ADJOINING 7.5' QUADRANGLE NAMES

ROAD LEGEND

Improved Road.....
Unimproved Road.....
Trail.....
Interstate Route.....
U.S. Route.....
State Route.....

SHARP TOP, OREG.
PROVISIONAL EDITION 1985

42120-G4-TF-024