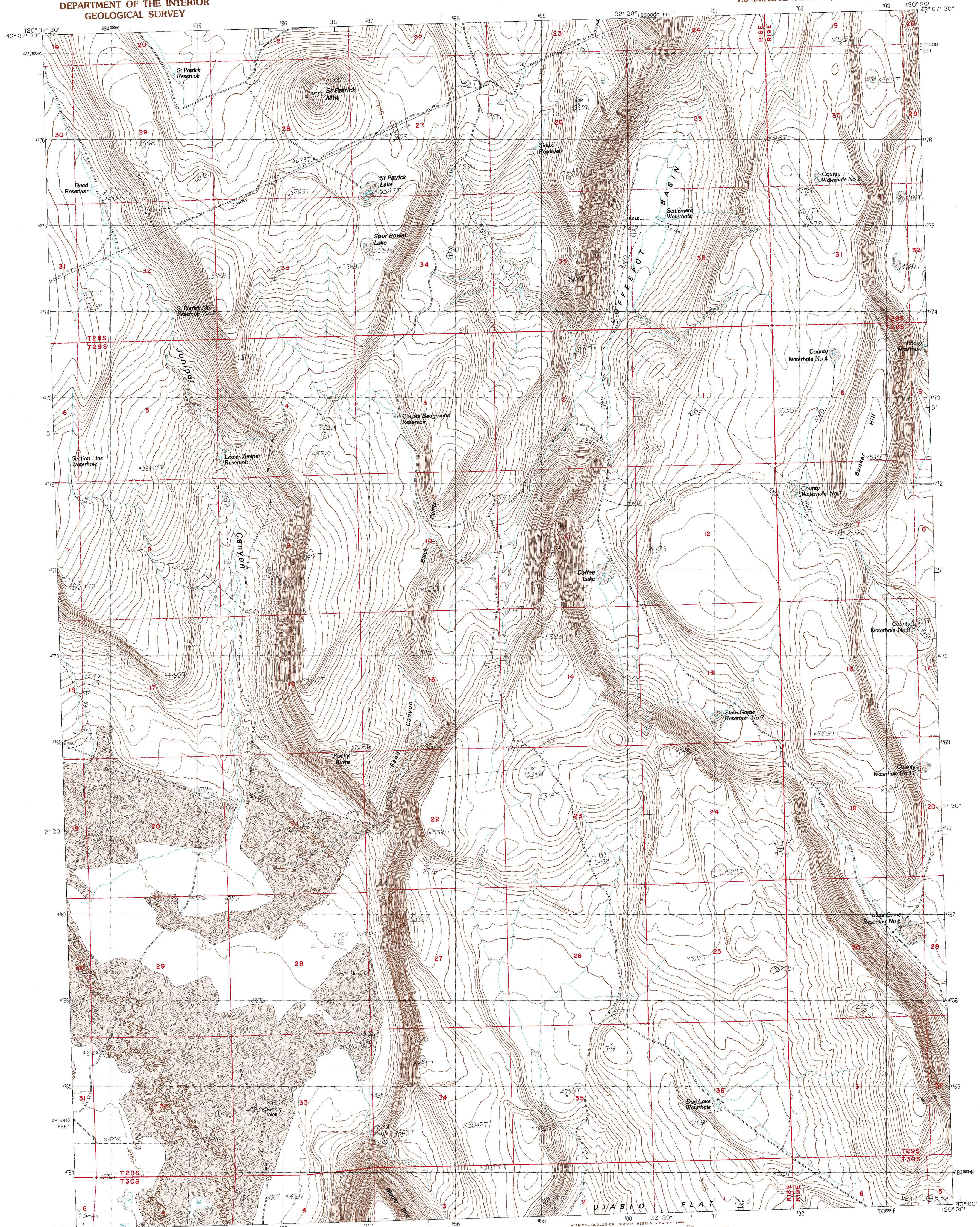


UNITED STATES
DEPARTMENT OF THE INTERIOR
GEOLOGICAL SURVEY

ST. PATRICK MTN. QUADRANGLE
OREGON-LAKE CO.
7.5 MINUTE SERIES (TOPOGRAPHIC)

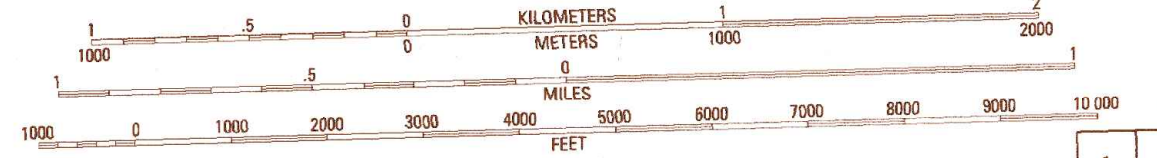


PRODUCED BY THE UNITED STATES GEOLOGICAL SURVEY CONTROL BY USGS, NOS/NOAA 1980 COMPILED FROM AERIAL PHOTOGRAPHS TAKEN 1986 FIELD CHECKED 1981. MAP EDITED LAMBERT CONFORMAL CONIC PROJECTION 1000-METER UNIVERSAL TRANSVERSE MERCATOR ZONE 10 10,000-FOOT STATE GRID TICS OREGON SOUTH ZONE UTM GRID DECLINATION 140° EAST 1985 MAGNETIC NORTH DECLINATION 18° EAST VERTICAL DATUM NATIONAL GEODETIC VERTICAL DATUM OF 1983 HORIZONTAL DATUM 1927 NORTH AMERICAN DATUM To place on the predicted North American Datum of 1983, move the projection lines as shown by dashed corner ticks (19 meters north / 89 meters east) There may be private holdings within the boundaries of any Federal and State Reservations shown on this map

PROVISIONAL MAP
Produced from original manuscript drawings. Information shown as of date of field check.

THIS MAP COMPLIES WITH NATIONAL MAP ACCURACY STANDARDS FOR SALE BY U. S. GEOLOGICAL SURVEY, DENVER, COLORADO 80225, OR RESTON, VIRGINIA 22092

SCALE 1:24 000



CONTOUR INTERVAL 20 FEET

To convert meters to feet multiply by 3.2808
To convert feet to meters multiply by 0.3048

1	2	3	1 Christmas Valley
2	3	4	2 Fandango Canyon
3	4	5	3 Vaughn Well
4	5	6	4 Sheeplick Draw
5	6	7	5 Sheep Rock
6	7	8	6 Ana River
7	8		7 Diablo Peak
8			8 Bull Lake

ROAD LEGEND
Improved Road
Unimproved Road
Trail
Interstate Route U.S. Route State Route

ST. PATRICK MTN., OREG.
PROVISIONAL EDITION 1986

43120-A5-TF-024