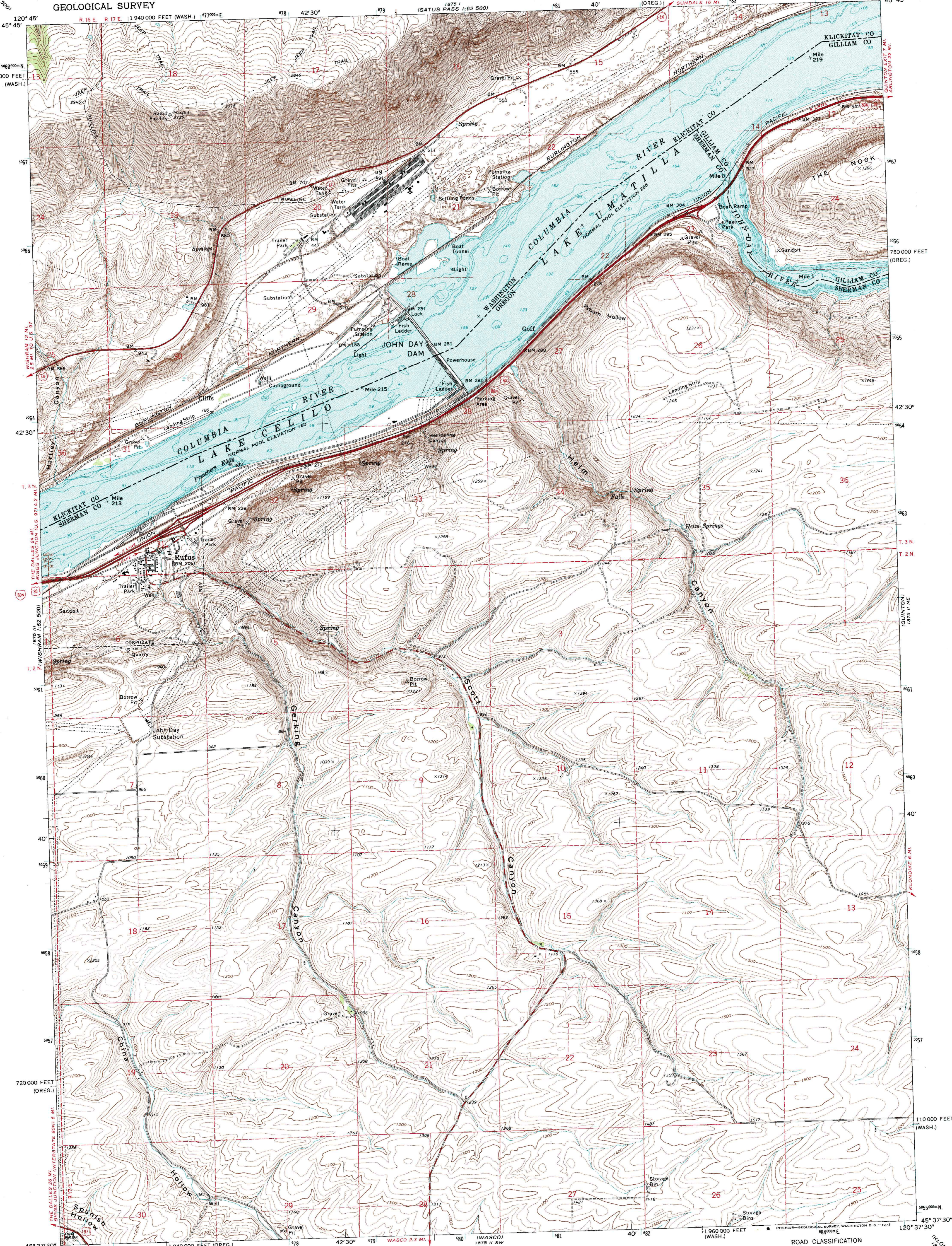


UNITED STATES  
DEPARTMENT OF THE INTERIOR  
GEOLOGICAL SURVEY

RUFUS QUADRANGLE  
OREGON-WASHINGTON  
7.5 MINUTE SERIES (TOPOGRAPHIC)  
NW 1/4 WASCO 15' QUADRANGLE



Mapped, edited, and published by the Geological Survey  
Control by USGS and USC&GS  
Topography by photogrammetric methods from aerial  
photographs taken 1970. Field checked 1971  
Selected hydrographic data compiled from USC&GS  
Charts 6158 and 6159 (1970)  
This information is not intended for navigational purposes  
Polyconic projection, 1927 North American datum  
10,000-foot grids based on Oregon coordinate system, north zone  
and Washington coordinate system, south zone  
1000-meter Universal Transverse Mercator grid ticks,  
zone 10, shown in blue  
Fine red dashed lines indicate selected fence lines

SCALE 1:24,000

CONTOUR INTERVAL 20 FEET  
DATUM IS MEAN SEA LEVEL

DEPTH CURVES AND SOUNDINGS IN FEET  
DATUM BELOW JOHN DAY DAM IS NORMAL POOL ELEVATION 160 FEET  
DATUM ABOVE JOHN DAY DAM IS NORMAL POOL ELEVATION 265 FEET

THIS MAP COMPLIES WITH NATIONAL MAP ACCURACY STANDARDS  
FOR SALE BY U.S. GEOLOGICAL SURVEY, DENVER, COLORADO 80225 OR WASHINGTON, D.C. 20242  
A FOLDER DESCRIBING TOPOGRAPHIC MAPS AND SYMBOLS IS AVAILABLE ON REQUEST

ROAD CLASSIFICATION

- Primary highway, hard surface
- Light-duty road, hard or improved surface
- Secondary highway, hard surface
- Unimproved road
- Interstate Route
- U.S. Route
- State Route

RUFUS, OREG.-WASH.  
NW 1/4 WASCO 15' QUADRANGLE  
N4537.5-W12037.5/7.5

1971  
AMS 1875 II NW-SERIES V892