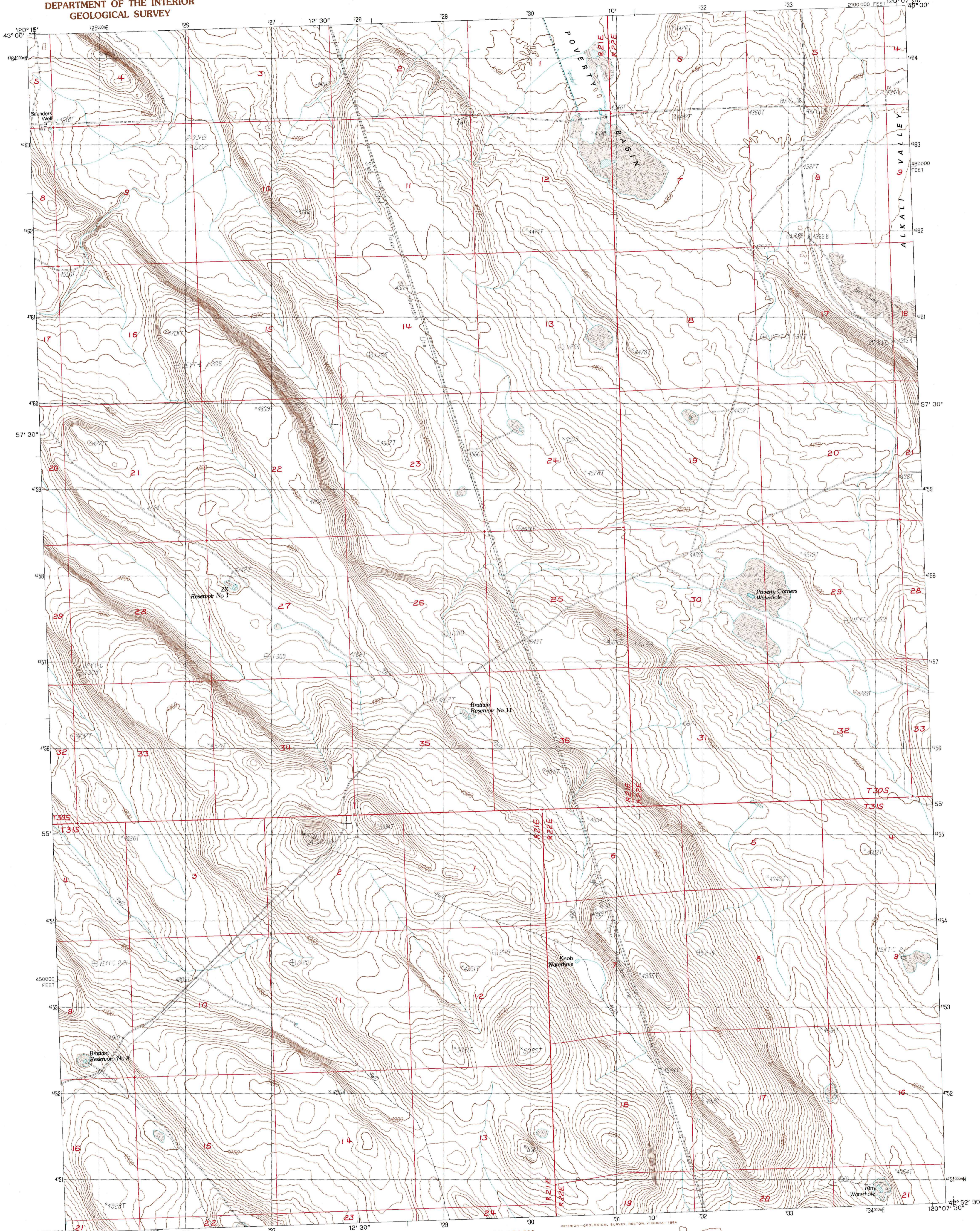


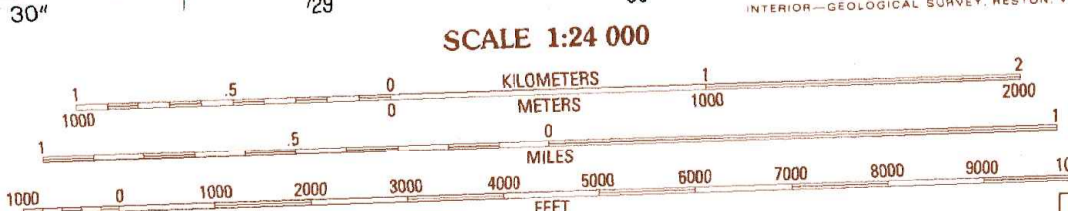
UNITED STATES
DEPARTMENT OF THE INTERIOR
GEOLOGICAL SURVEY

POVERTY BASIN SOUTH QUADRANGLE
OREGON—LAKE CO.
7.5 MINUTE SERIES (TOPOGRAPHIC)



PRODUCED BY THE UNITED STATES GEOLOGICAL SURVEY
CONTROL BY USGS, NOS/NOAA
COMPILED FROM AERIAL PHOTOGRAPHS TAKEN 1974 AND 1980
FIELD CHECKED 1981. MAP EDITED LAMBERT CONFORMAL CONIC
PROJECTION NATIONAL GEODETIC VERTICAL DATUM OF 1929
GRID: 100-METER UNIVERSAL TRANSVERSE MERCATOR ZONE 10
10,000-FOOT STATE GRID TICKS OREGON, SOUTH ZONE
UTM GRID DECLINATION 18° EAST
1980 MAGNETIC NORTH DECLINATION 18° EAST
VERTICAL DATUM NATIONAL GEODETIC VERTICAL DATUM OF 1929
HORIZONTAL DATUM 1927 NORTH AMERICAN DATUM
To place on the predicted North American Datum of 1983,
move the projection lines as shown by dashed corner ticks
(18 meters north / 88 meters east)
There may be private inholdings within the boundaries of any
Federal and State Reservations shown on this map

PROVISIONAL MAP
Produced from original
manuscript drawings. Infor-
mation shown as of date of
photography.



SCALE 1:24 000
CONTOUR INTERVAL 10 FEET
CONTROL ELEVATIONS SHOWN TO THE NEAREST 0.1 FOOT
OTHER ELEVATIONS SHOWN TO THE NEAREST FOOT
To convert meters to feet multiply by 3.2808
To convert feet to meters multiply by 0.3048

1	2	3	1 Fire Lake
2	3	4	2 Poverty Basin North
3	4	5	3 Alkali Buttes
4	5	6	4 Diatomite Reservoir
5	6	7	5 Alkali Lake
6	7	8	6 Biscuit Butte
			7 Sawed Horn
			8 Coleman Hills

ADJOINING 7.5 QUADRANGLE NAMES

ROAD LEGEND
Improved Road
Unimproved Road
Trail
Interstate Route U.S. Route State Route

POVERTY BASIN SOUTH, OREG.
PROVISIONAL EDITION 1984

42120-H2-TF-024

THIS MAP COMPLIES WITH NATIONAL MAP ACCURACY STANDARDS
FOR SALE BY U.S. GEOLOGICAL SURVEY, DENVER, COLORADO 80225, OR RESTON, VIRGINIA 22092