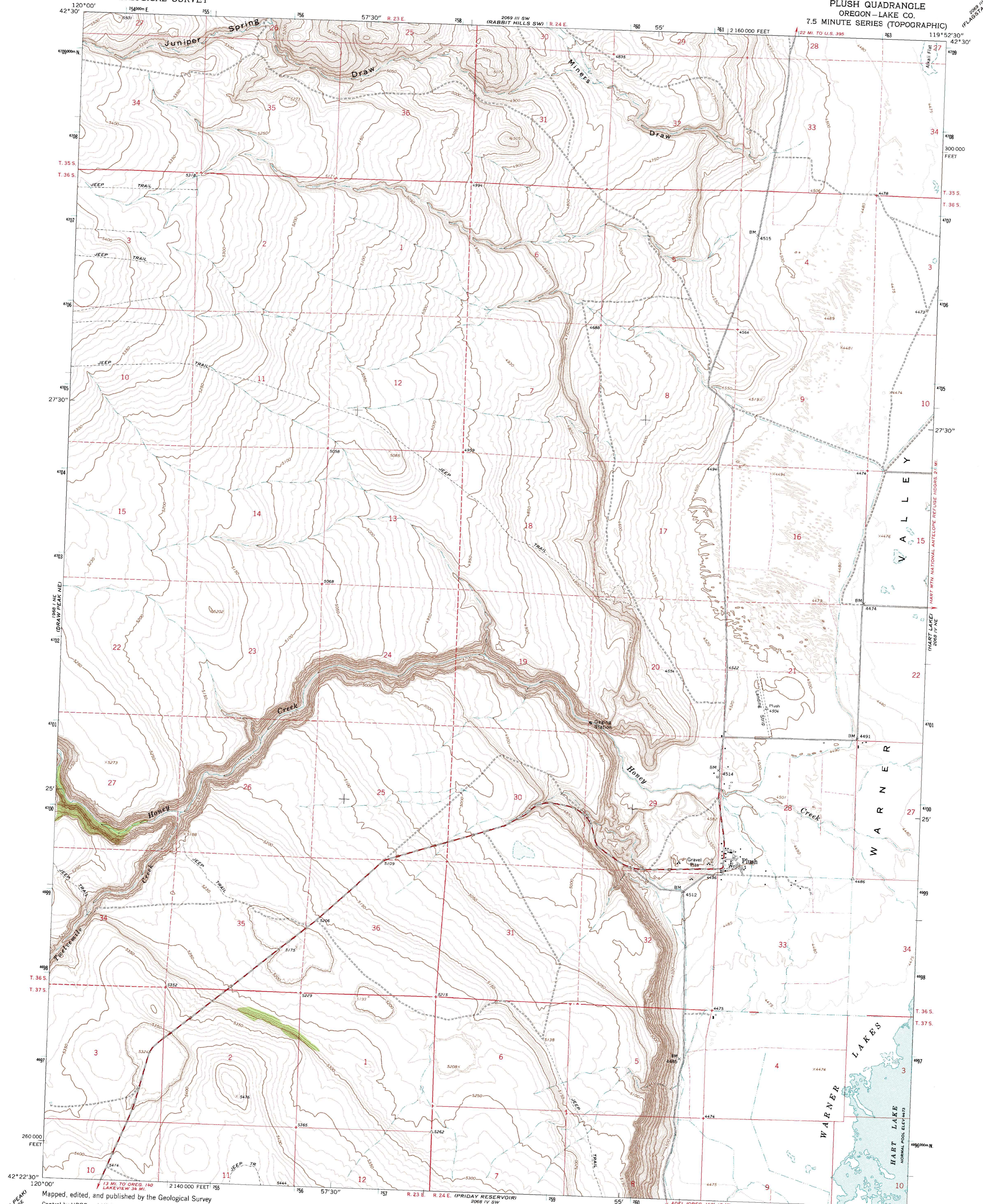


1996 / NE (DRAY LAKE)
2069 / SE (FLAUSTAFF LAKE)

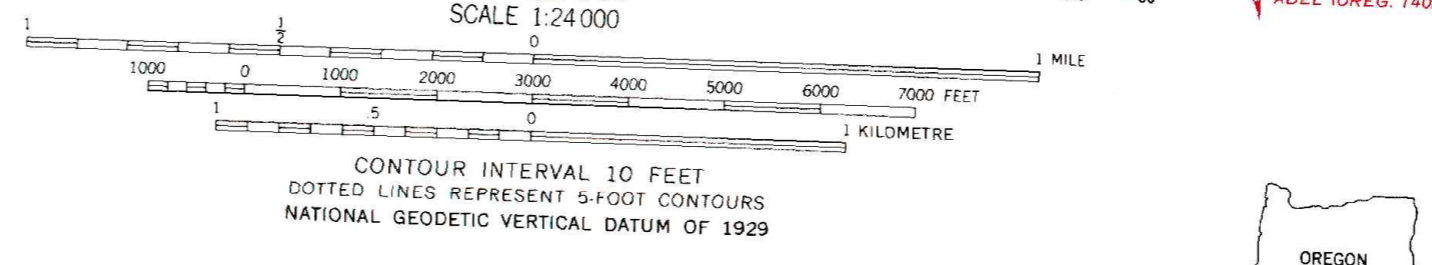
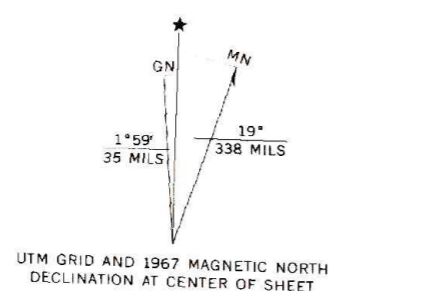
UNITED STATES
DEPARTMENT OF THE INTERIOR
GEOLOGICAL SURVEY

PLUSH QUADRANGLE
OREGON-LAKE CO.
7.5 MINUTE SERIES (TOPOGRAPHIC)

2069 / SE (FLAUSTAFF LAKE)



Mapped, edited, and published by the Geological Survey
 Control by USGS and USC&GS
 Topography by photogrammetric methods from aerial
 photographs taken 1964. Field checked 1967
 Polyconic projection. 1927 North American datum
 10,000-foot grid based on Oregon coordinate system,
 south zone
 1000-metre Universal Transverse Mercator grid ticks,
 zone 11, shown in blue
 Fine red dashed lines indicate selected fence lines



Medium-duty ————
 Light-duty ————
 Unimproved dirt - - - -

THIS MAP COMPLIES WITH NATIONAL MAP ACCURACY STANDARDS
 FOR SALE BY U. S. GEOLOGICAL SURVEY, DENVER, COLORADO 80225, OR RESTON, VIRGINIA 22092
 A FOLDER DESCRIBING TOPOGRAPHIC MAPS AND SYMBOLS IS AVAILABLE ON REQUEST

PLUSH, OREG.
 N4222.5—W11952.5/7.5

1967
 AMS 2068 IV NW—SERIES V892