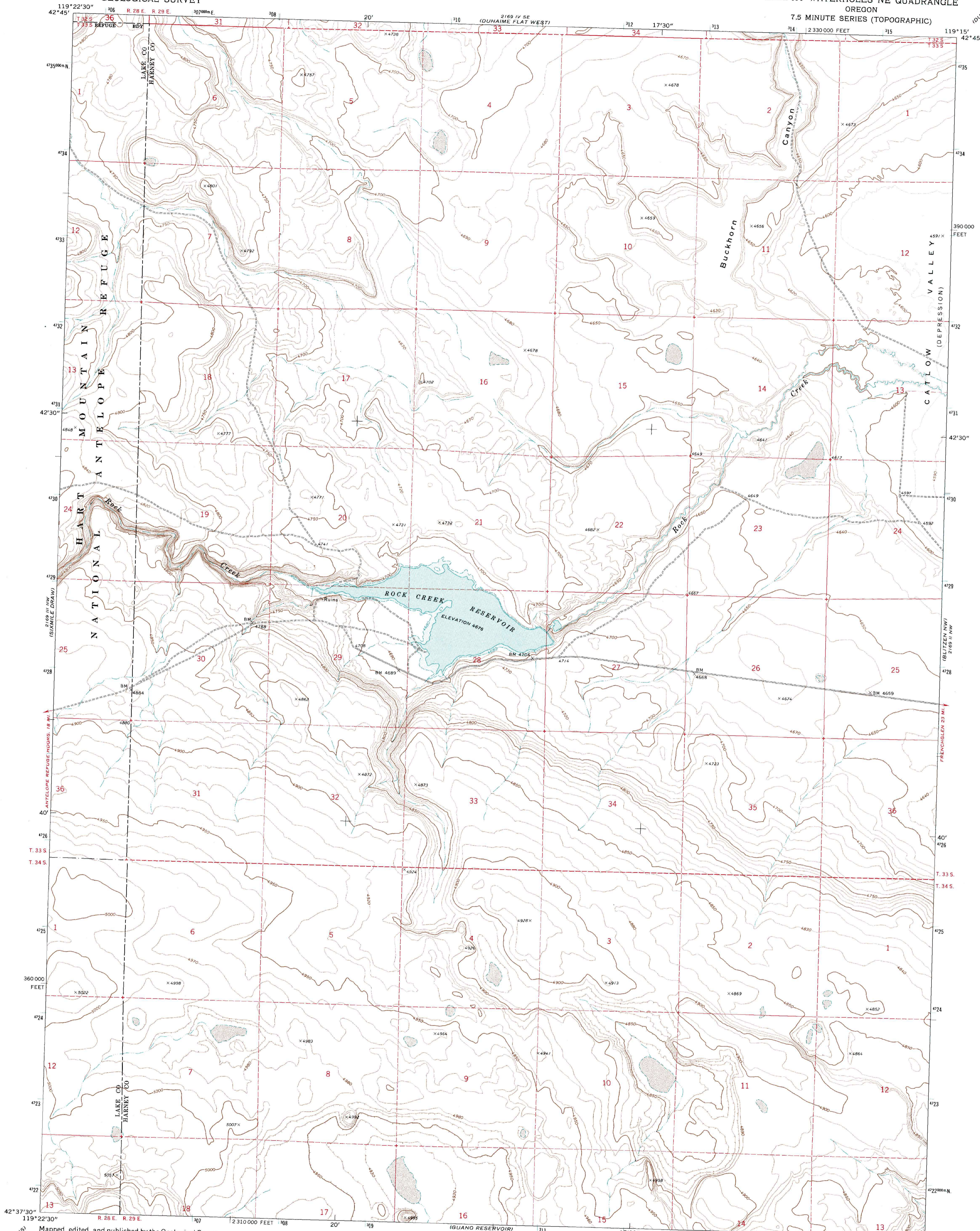
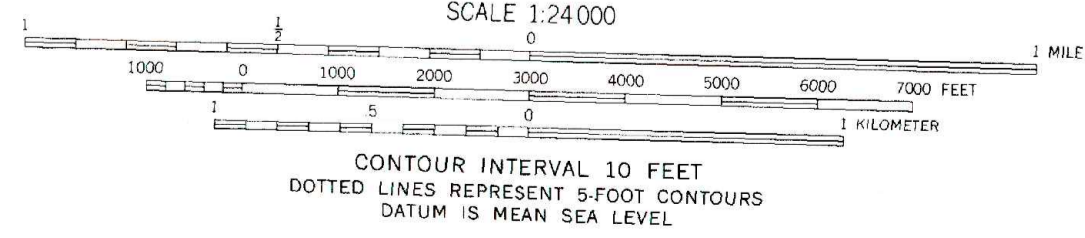
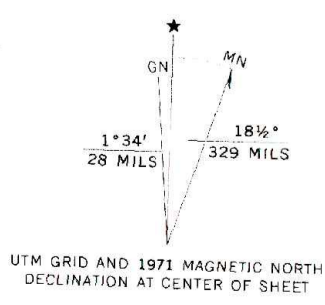


UNITED STATES  
DEPARTMENT OF THE INTERIOR  
GEOLOGICAL SURVEY

MURPHY WATERHOLES NE QUADRANGLE  
OREGON  
7.5 MINUTE SERIES (TOPOGRAPHIC)



Mapped, edited, and published by the Geological Survey  
Control by USGS and USC&GS  
Topography by photogrammetric methods from aerial  
photographs taken 1969. Field checked 1971  
Projection and 10,000-foot grid ticks: Oregon coordinate  
system, south zone (Lambert conformal conic)  
1000-meter Universal Transverse Mercator grid ticks,  
zone 11, shown in blue. 1927 North American datum  
Fine red dashed lines indicate selected fence lines  
Areas covered by dashed light-blue pattern  
are subject to controlled inundation



ROAD CLASSIFICATION

|                                 |   |
|---------------------------------|---|
| Primary highway, hard surface   | Light-duty road, hard or improved surface |
| Secondary highway, hard surface | Unimproved road                           |
| Interstate Route                | U. S. Route                               |
|                                 | State Route                               |

THIS MAP COMPLIES WITH NATIONAL MAP ACCURACY STANDARDS  
FOR SALE BY U. S. GEOLOGICAL SURVEY, DENVER, COLORADO 80225, OR RESTON, VIRGINIA 22092  
A FOLDER DESCRIBING TOPOGRAPHIC MAPS AND SYMBOLS IS AVAILABLE ON REQUEST

MURPHY WATERHOLES NE, OREG.  
N4237.5-W11915/7.5