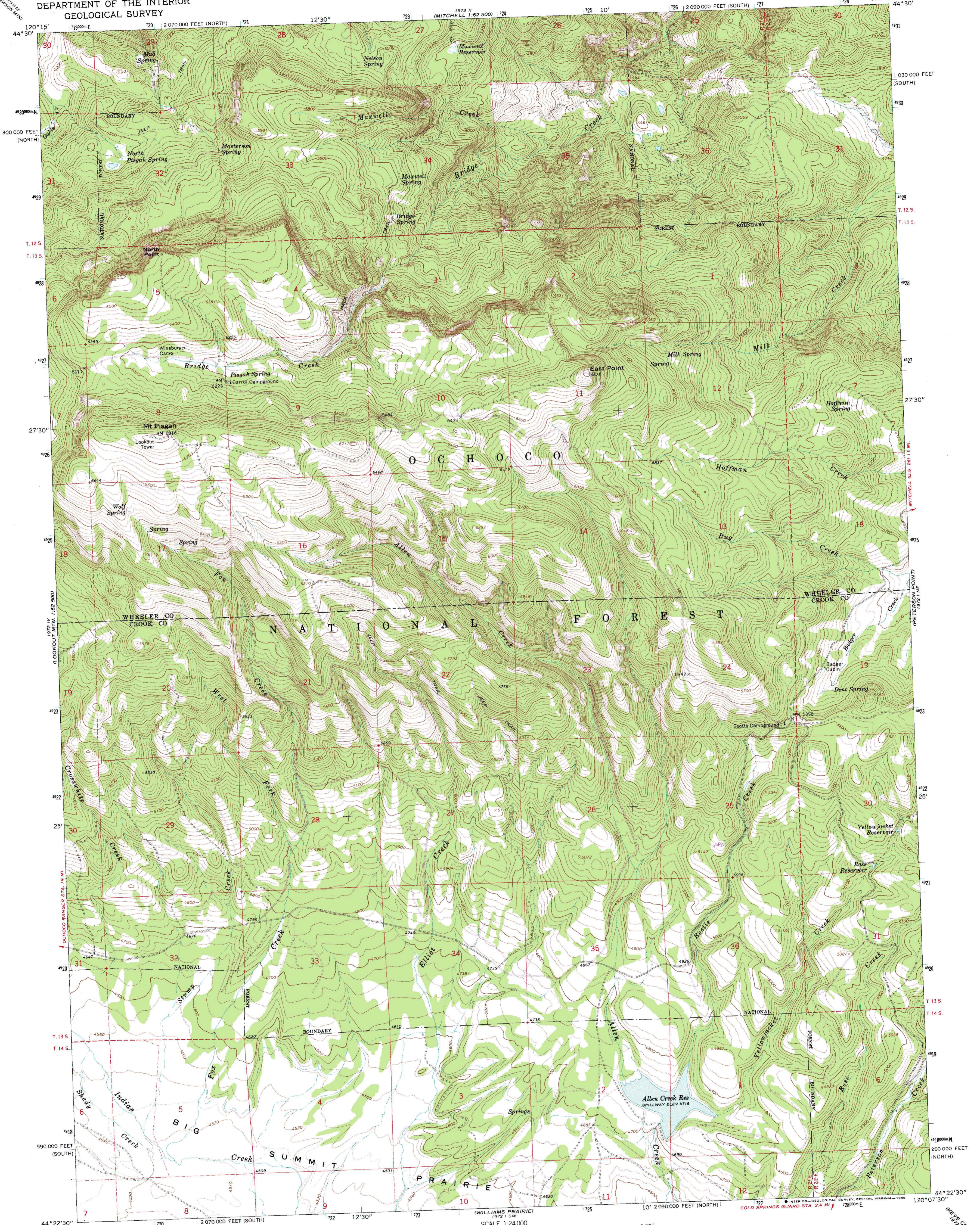
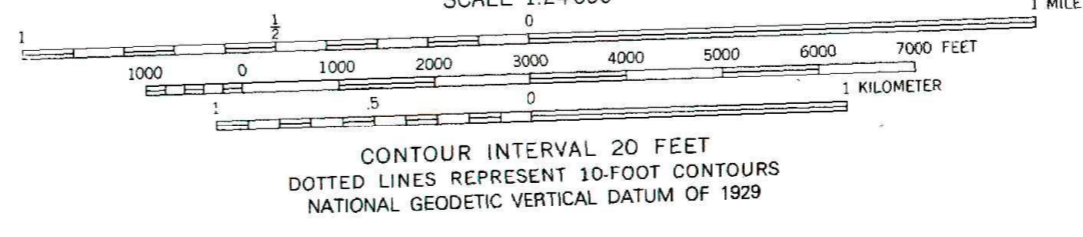
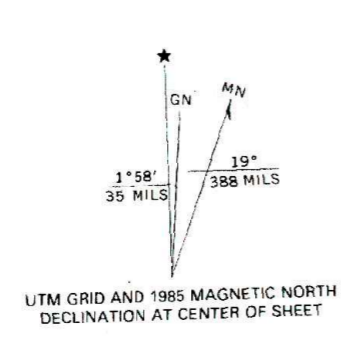


UNITED STATES
DEPARTMENT OF THE INTERIOR
GEOLOGICAL SURVEY

MT. PISGAH QUADRANGLE
OREGON
7.5 MINUTE SERIES (TOPOGRAPHIC)



Mapped, edited, and published by the Geological Survey
Control by USGS and NOS/NOAA
Topography by photogrammetric methods from aerial photographs taken 1959. Field checked 1966
Polyconic projection. 1927 North American datum
10,000-foot grids based on Oregon coordinate system, south and north zones
1000-meter Universal Transverse Mercator grid ticks, zone 10, shown in blue
To place on the predicted North American Datum 1983 move the projection lines 20 meters north and 88 meters east as shown by dashed corner ticks
Fine red dashed lines indicate selected fence lines
There may be private inholdings within the boundaries of the National or State reservations shown on this map.



ROAD CLASSIFICATION
Light-duty ——— Unimproved dirt - - - - -

OREGON
QUADRANGLE LOCATION

Revisions shown in purple compiled by Geological Survey from aerial photographs taken 1982. Partial field check by U.S. Forest Service. Map edited 1985.

MT. PISGAH, OREG.
44120-D2-TF-024
PHOTOREVISED 1985
1966
DMA 1972 1 NW-SERIES V892

THIS MAP COMPLIES WITH NATIONAL MAP ACCURACY STANDARDS
FOR SALE BY U. S. GEOLOGICAL SURVEY, DENVER, COLORADO 80225, OR RESTON, VIRGINIA 22092
A FOLDER DESCRIBING TOPOGRAPHIC MAPS AND SYMBOLS IS AVAILABLE ON REQUEST