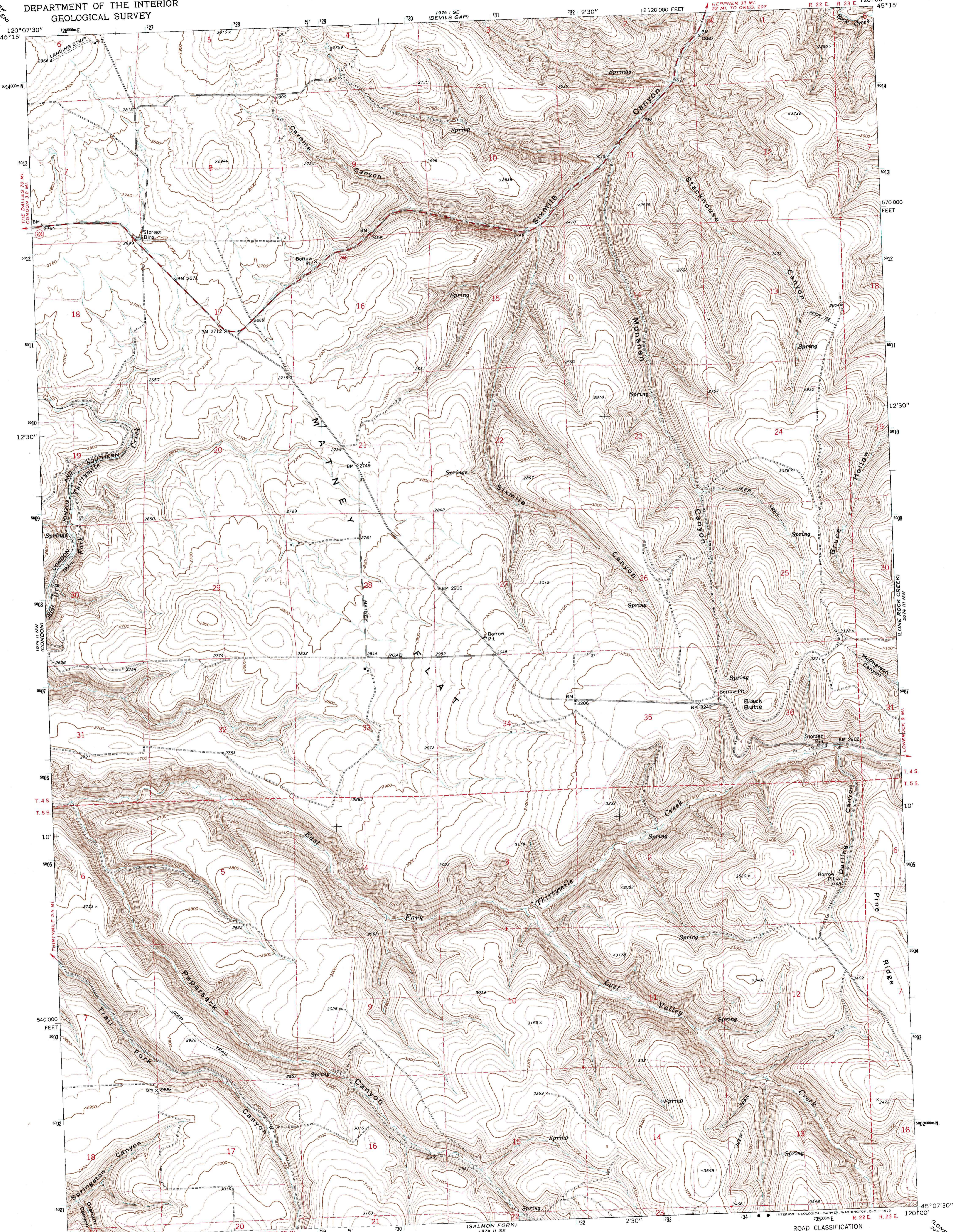
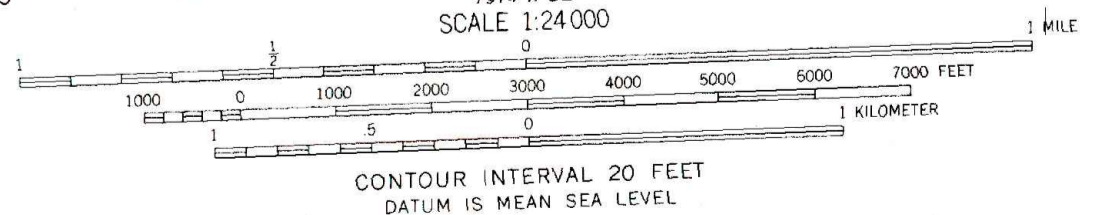
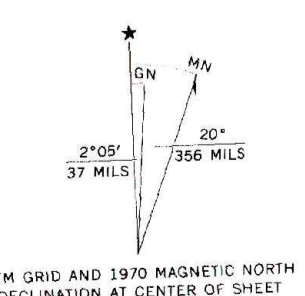


MATNEY FLAT QUADRANGLE  
OREGON—GILLIAM CO.  
7.5 MINUTE SERIES (TOPOGRAPHIC)

UNITED STATES  
DEPARTMENT OF THE INTERIOR  
GEOLOGICAL SURVEY



Mapped, edited, and published by the Geological Survey  
Control by USGS and USC&GS  
Topography by photogrammetric methods from aerial  
photographs taken 1969. Field checked 1970  
Projection and 10,000-foot grid ticks: Oregon coordinate  
system, north zone (Lambert conformal conic)  
1000-meter Universal Transverse Mercator grid ticks,  
zone 10, shown in blue. 1927 North American datum  
Fine red dashed lines indicate selected fence lines



ROAD CLASSIFICATION

Primary highway, hard surface	Light-duty road, hard or improved surface
Secondary highway, hard surface	Unimproved road
Interstate Route	U. S. Route
	State Route

MATNEY FLAT, OREG.  
N4507.5—W12000/7.5

1970  
AMS 1974 II NE—SERIES V892

THIS MAP COMPLIES WITH NATIONAL MAP ACCURACY STANDARDS  
FOR SALE BY U. S. GEOLOGICAL SURVEY, DENVER, COLORADO 80225, OR WASHINGTON, D. C. 20242  
A FOLDER DESCRIBING TOPOGRAPHIC MAPS AND SYMBOLS IS AVAILABLE ON REQUEST