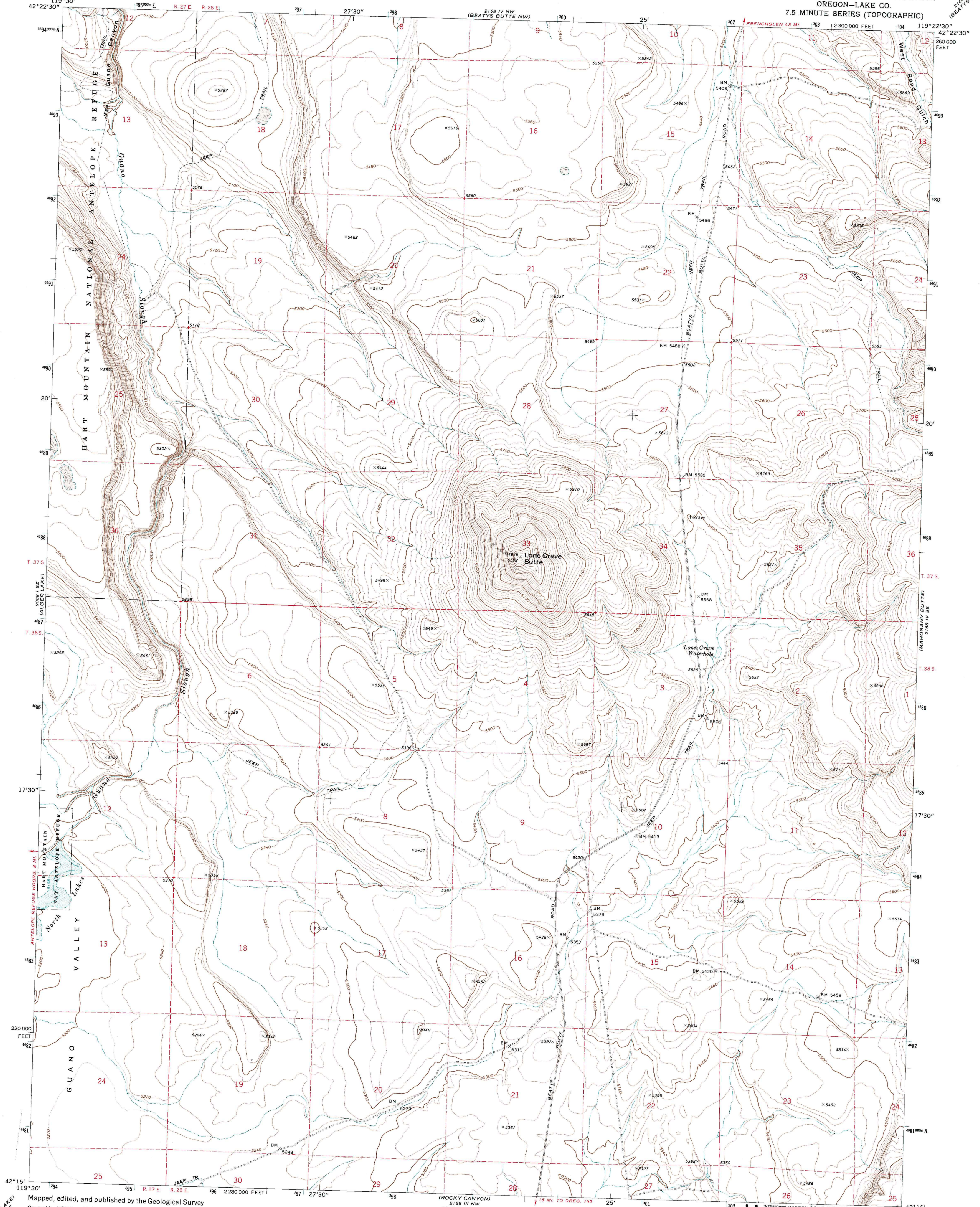
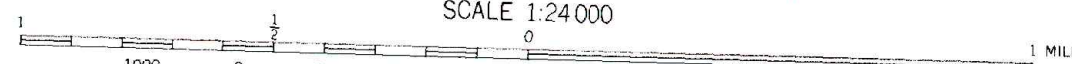
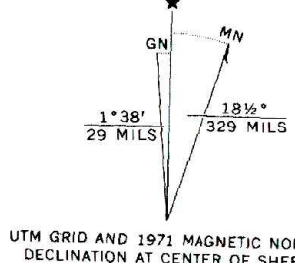


UNITED STATES  
DEPARTMENT OF THE INTERIOR  
GEOLOGICAL SURVEY

LONE GRAVE BUTTE QUADRANGLE  
OREGON—LAKE CO.  
7.5 MINUTE SERIES (TOPOGRAPHIC)



Mapped, edited, and published by the Geological Survey  
Control by USGS and USC&GS  
Topography by photogrammetric methods from aerial  
photographs taken 1970. Field checked 1971  
Projection and 10,000-foot grid ticks: Oregon coordinate  
system, south zone (Lambert conformal conic)  
1000-meter Universal Transverse Mercator grid ticks,  
zone 11, shown in blue. 1927 North American datum  
Fine red dashed lines indicate selected fence lines  
Areas covered by dashed light-blue pattern  
are subject to controlled inundation



CONTOUR INTERVAL 20 FEET  
DOTTED LINES REPRESENT 10-FOOT CONTOURS  
DATUM IS MEAN SEA LEVEL



ROAD CLASSIFICATION

Primary highway, hard surface — Light-duty road, hard or improved surface

Secondary highway, hard surface — Unimproved road

Interstate Route U.S. Route State Route

THIS MAP COMPLIES WITH NATIONAL MAP ACCURACY STANDARDS  
FOR SALE BY U.S. GEOLOGICAL SURVEY, DENVER, COLORADO 80225, OR RESTON, VIRGINIA 22092  
A FOLDER DESCRIBING TOPOGRAPHIC MAPS AND SYMBOLS IS AVAILABLE ON REQUEST

LONE GRAVE BUTTE, OREG.  
N4215-W11922.5/7.5

1971

AMS 2168 IV SW—SERIES V892