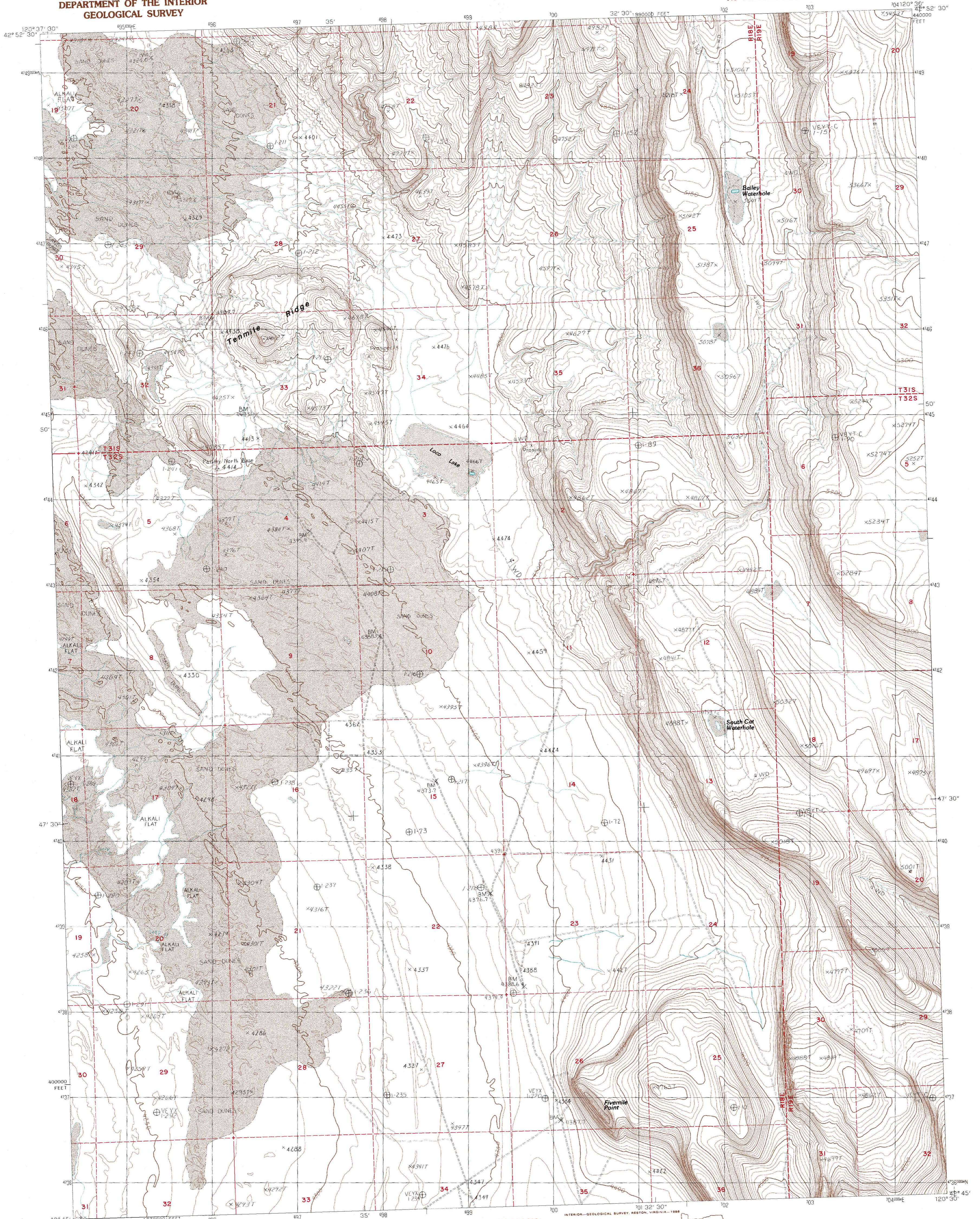


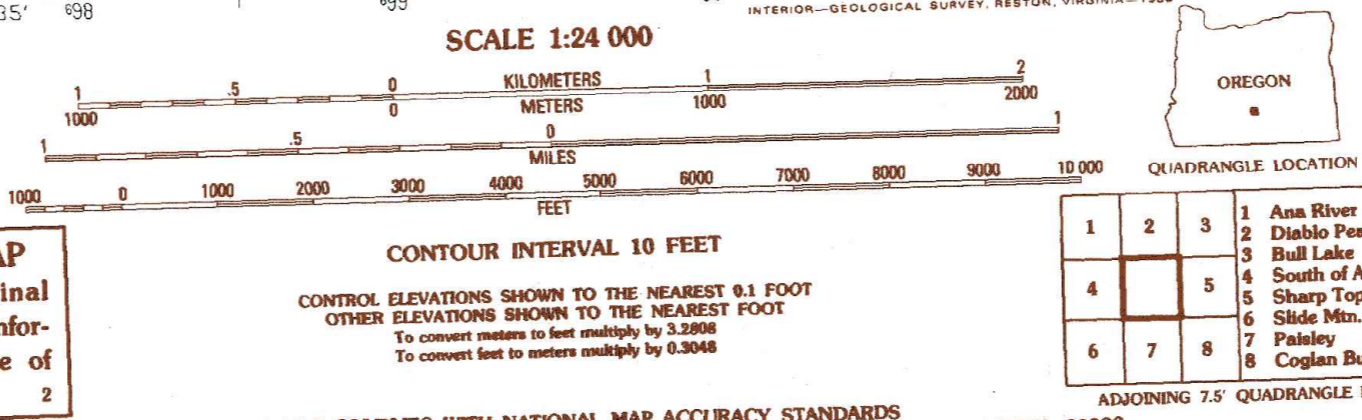
UNITED STATES
DEPARTMENT OF THE INTERIOR
GEOLOGICAL SURVEY

LOCO LAKE QUADRANGLE
OREGON—LAKE CO.
7.5 MINUTE SERIES (TOPOGRAPHIC)



PRODUCED BY THE UNITED STATES GEOLOGICAL SURVEY
CONTROL BY USGS, NOS/NOAA
COMPILED FROM AERIAL PHOTOGRAPHS TAKEN 1980
FIELD CHECKED 1981, MAP EDITED 1986
PROJECTION LAMBERT CONFORMAL CONIC
GRID 1000-METER UNIVERSAL TRANSVERSE MERCATOR
10000-FOOT STATE GRID TICS
1983 MAGNETIC NORTH DECLINATION
UTM GRID DECLINATION
VERTICAL DATUM NATIONAL GEODETIC VERTICAL DATUM OF 1989
HORIZONTAL DATUM 1983 NORTH AMERICAN DATUM
To place on the predicted North American Datum of 1983,
move the projection lines as shown by dashed corner ticks
(1.9 meters north / 89 meters east)
There may be private inholdings within the boundaries of any
Federal and State Reservations shown on this map

PROVISIONAL MAP
Produced from original
manuscript drawings. Infor-
mation shown as of date of
field check.



ROAD LEGEND

Improved Road.....
Unimproved Road.....
Trail.....
Interstate Route.....
U.S. Route.....
State Route.....

LOCO LAKE, OREG.
PROVISIONAL EDITION 1986

42120-G5-TF-024

THIS MAP COMPLES WITH NATIONAL MAP ACCURACY STANDARDS
FOR SALE BY U. S. GEOLOGICAL SURVEY, DENVER, COLORADO 80225, OR RESTON, VIRGINIA 22092