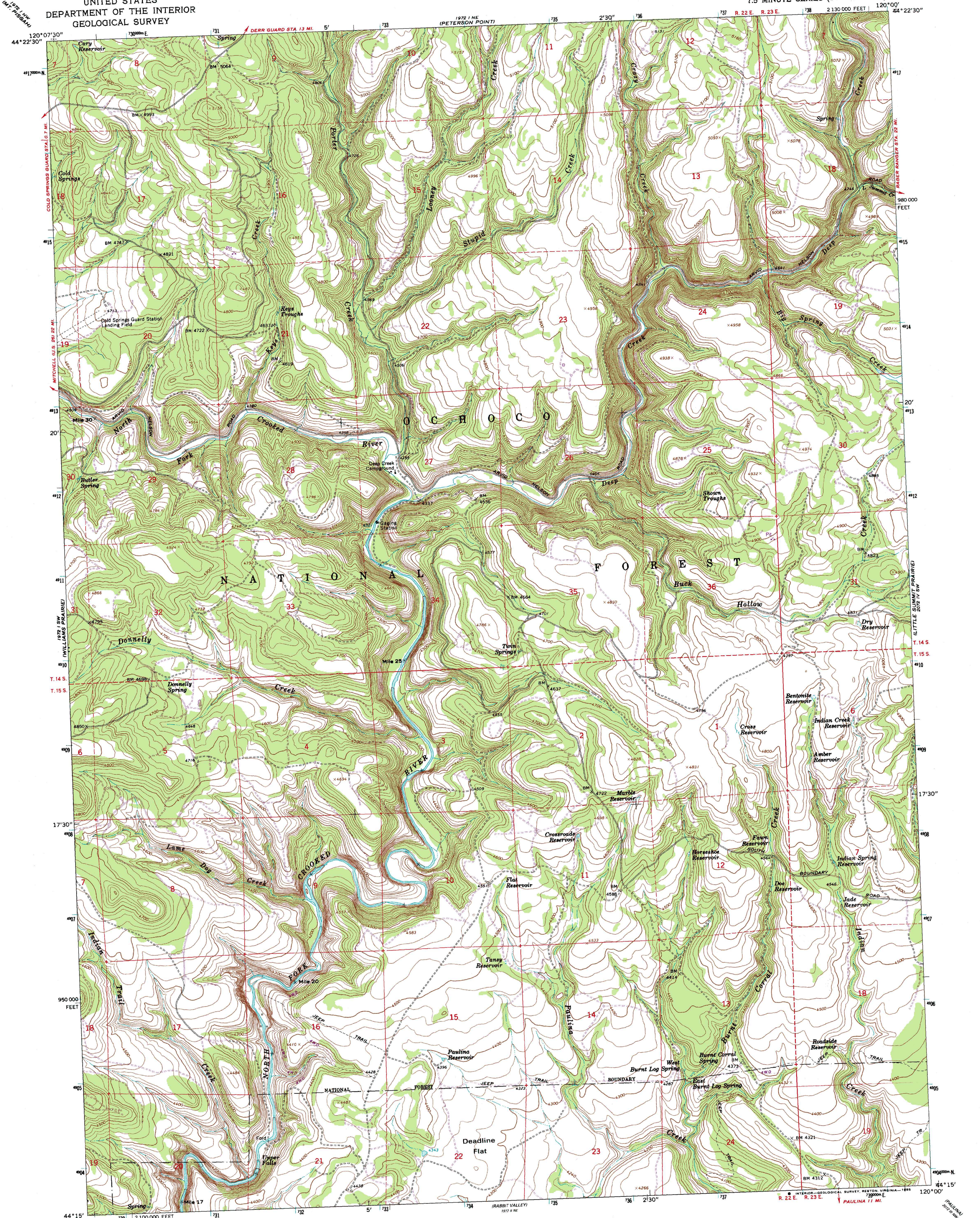


UNITED STATES
DEPARTMENT OF THE INTERIOR
GEOLOGICAL SURVEY

KEYS CREEK QUADRANGLE
OREGON-CROOK CO.
7.5 MINUTE SERIES (TOPOGRAPHIC)



Mapped, edited, and published by the Geological Survey

Control by USGS and NOS/NOAA

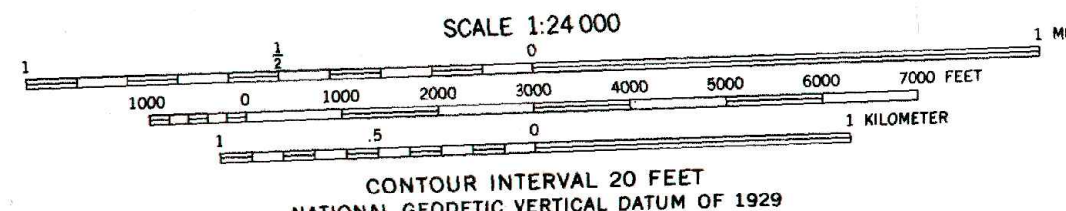
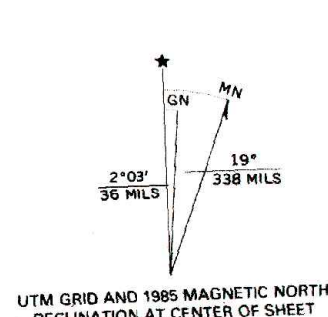
Topography by photogrammetric methods from aerial photographs taken 1959. Field checked 1966

Polyconic projection. 1927 North American datum 10,000-foot grid based on Oregon coordinate system, south zone

1000-meter Universal Transverse Mercator grid ticks, zone 10, shown in blue

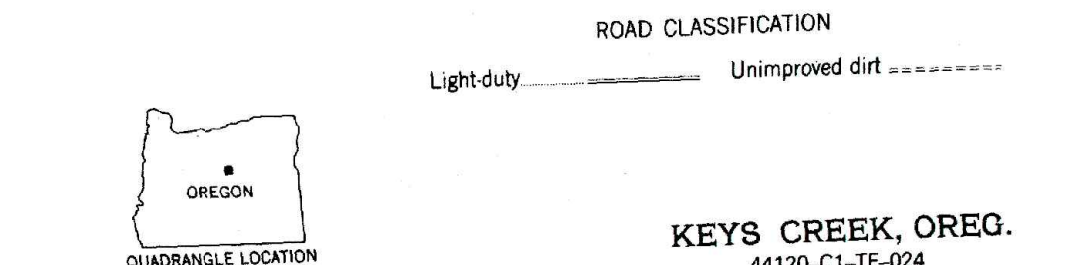
To place on the predicted North American Datum 1983 move the projection lines 19 meters north and 88 meters east as shown by dashed corner ticks

There may be private inholdings within the boundaries of the National or State reservations shown on this map.



CONTOUR INTERVAL 20 FEET
NATIONAL GEODETIC VERTICAL DATUM OF 1929

THIS MAP COMPLIES WITH NATIONAL MAP ACCURACY STANDARDS
FOR SALE BY U. S. GEOLOGICAL SURVEY, DENVER, COLORADO 80225, OR RESTON, VIRGINIA 22092
A FOLDER DESCRIBING TOPOGRAPHIC MAPS AND SYMBOLS IS AVAILABLE ON REQUEST



KEYS CREEK, OREG.
44120-C1-TF-024

Revision shown in purple compiled by Geological Survey from aerial photographs taken 1982. Partial field check by U.S. Forest Service. Map edited 1985.

1966
PHOTOREVISED 1985
DMA 1972 1 SE--SERIES V892