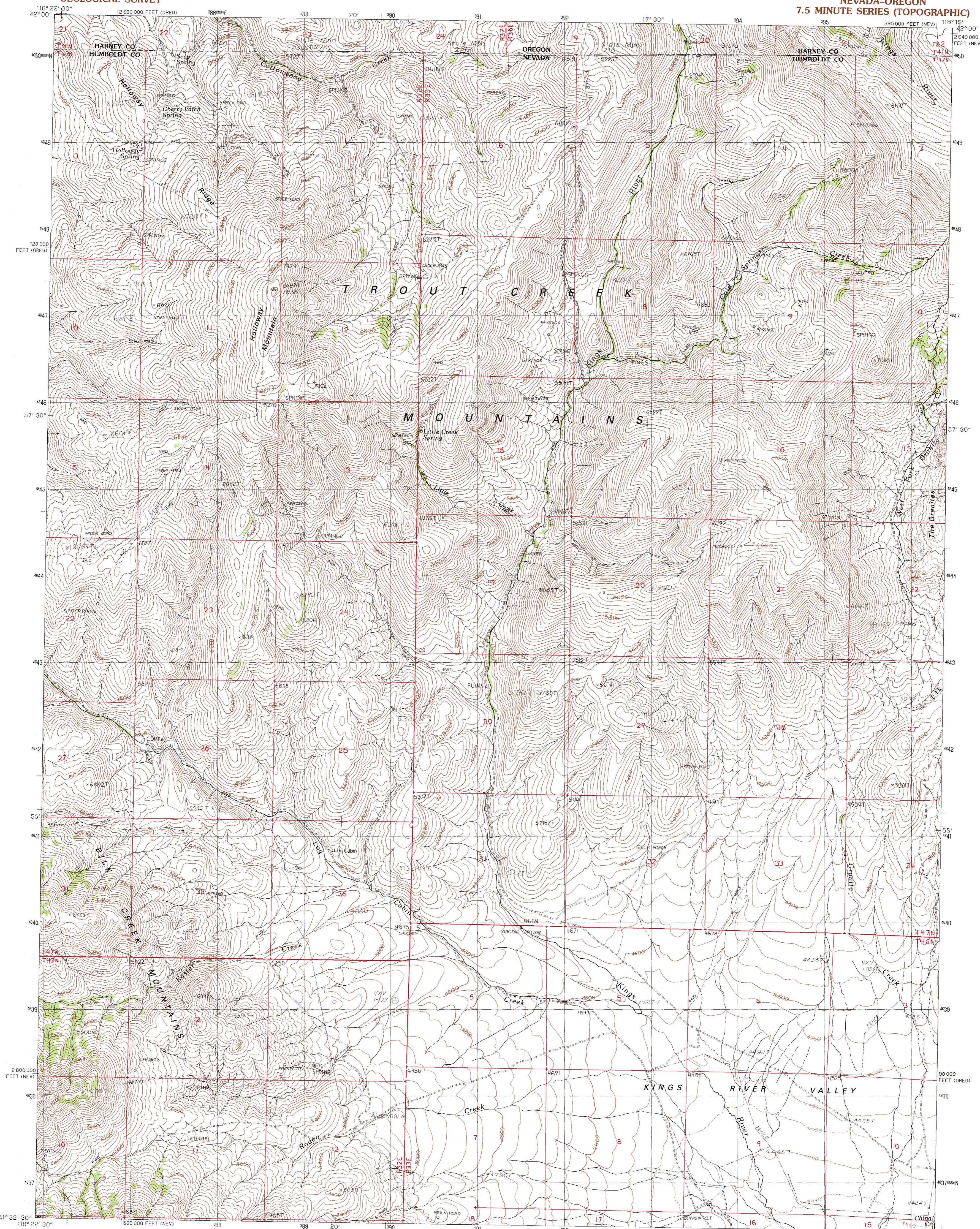


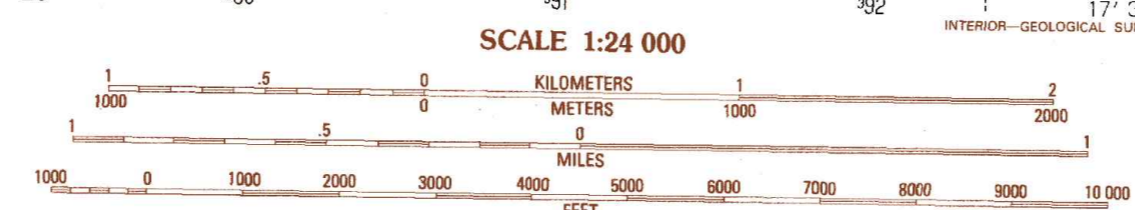
UNITED STATES
DEPARTMENT OF THE INTERIOR
GEOLOGICAL SURVEY

HOLLOWAY MOUNTAIN QUADRANGLE
NEVADA-OREGON
7.5 MINUTE SERIES (TOPOGRAPHIC)



PRODUCED BY THE UNITED STATES GEOLOGICAL SURVEY CONTROL BY USGS, NOS/NOAA COMPILED FROM AERIAL PHOTOGRAPHS TAKEN 1959 REVISIONS FROM AERIAL PHOTOGRAPHS TAKEN 1985 FIELD CHECKED 1988. MAP EDITED 1990 HORIZONTAL DATUM TRANSVERSE MERCATOR PROJECTION 1000-METER UNIVERSAL TRANSVERSE MERCATOR ZONE 11 10,000-FOOT STATE GRID TICKS NEVADA, WEST ZONE AND OREGON, SOUTH ZONE UTM GRID DECLINATION 0°53' WEST VERTICAL DATUM 1650 EAST NATIONAL GEODETIC VERTICAL DATUM OF 1929 TO PLACE ON THE PREDICTED NORTH AMERICAN DATUM OF 1983, MOVE THE PROJECTION LINES AS SHOWN BY DASHED CORNER TICKS (15 METERS NORTH AND 82 METERS EAST) THERE MAY BE PRIVATE INHOLDINGS WITHIN THE BOUNDARIES OF ANY FEDERAL OR STATE RESERVATIONS SHOWN ON THIS MAP

PROVISIONAL MAP
Produced from original manuscript drawings. Information shown as of date of field check.



SCALE 1:24 000
KILOMETERS 0 1 2
METERS 0 1000 2000
FEET 0 1000 2000 3000 4000 5000 6000 7000 8000 9000 10 000
CONTOUR INTERVAL 40 FEET
SUPPLEMENTARY CONTOUR INTERVAL 20 FEET
To convert meters to feet multiply by 3.2808
To convert feet to meters multiply by .3048

1	2	3	1 Windy Point
4	5	2 The V	2 Chicken Spring
6	7	3 Trident Peak	5 Disaster Peak
8	8	6 Shaver Butte	7 Kings River Ranch
		8 Calavera Canyon	

ROAD LEGEND
Improved Road
Unimproved Road
Trail
Interstate Route U.S. Route State Route

HOLLOWAY MOUNTAIN, NEV.-OREG.
PROVISIONAL EDITION 1990

THIS MAP COMPLIES WITH NATIONAL MAP ACCURACY STANDARDS
FOR SALE BY U.S. GEOLOGICAL SURVEY, DENVER, COLORADO 80225, OR RESTON, VIRGINIA 22092