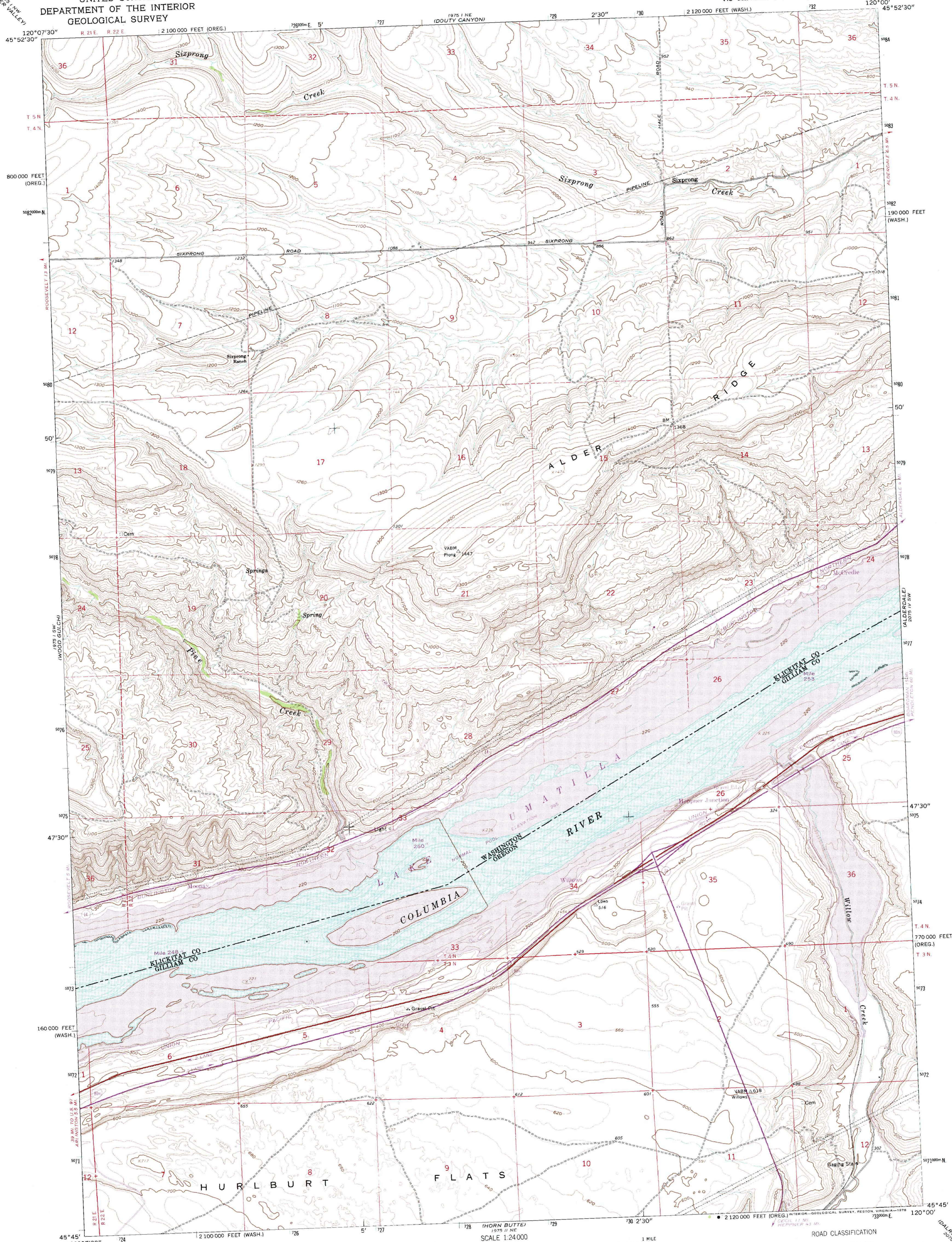


UNITED STATES  
DEPARTMENT OF THE INTERIOR  
GEOLOGICAL SURVEY

HEPPNER JUNCTION QUADRANGLE  
OREGON - WASHINGTON  
7.5 MINUTE SERIES (TOPOGRAPHIC)



Mapped, edited, and published by the Geological Survey

Control by USGS and USC&GS

Topography by photogrammetric methods from aerial

photographs taken 1958. Field checked 1962

Selected hydrographic data compiled from USC&GS Chart 6160 (1961)

This information is not intended for navigational purposes

Polyconic projection. 1927 North American datum

10,000-foot grids based on Washington coordinate system, south zone

and Oregon coordinate system, north zone

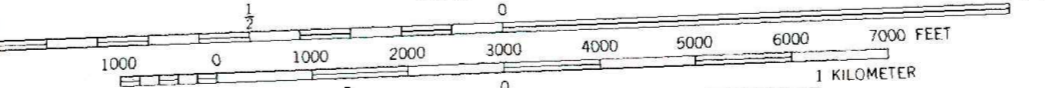
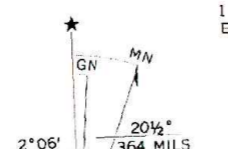
1000-meter Universal Transverse Mercator grid ticks,

zone 10, shown in blue

Fine red dashed lines indicate selected fence lines

Revisions shown in purple compiled from aerial photographs

taken 1970. This information not field checked



CONTOUR INTERVAL 20 FEET  
DOTTED LINES REPRESENT 10-FOOT CONTOURS  
NATIONAL GEODETIC VERTICAL DATUM OF 1929  
DEPTH CURVES AND SOUNDINGS IN FEET—DATUM IS LOW WATER  
GRADIENT ESTABLISHED BY CORPS OF ENGINEERS



HEPPNER JUNCTION, OREG. - WASH.  
N4545-W12000/7.5

1962  
PHOTOREVISED 1970  
AMS 1975 I SE—SERIES V891

THIS MAP COMPLIES WITH NATIONAL MAP ACCURACY STANDARDS  
FOR SALE BY U.S. GEOLOGICAL SURVEY, DENVER, COLORADO 80225, OR RESTON, VIRGINIA 22092  
A FOLDER DESCRIBING TOPOGRAPHIC MAPS AND SYMBOLS IS AVAILABLE ON REQUEST