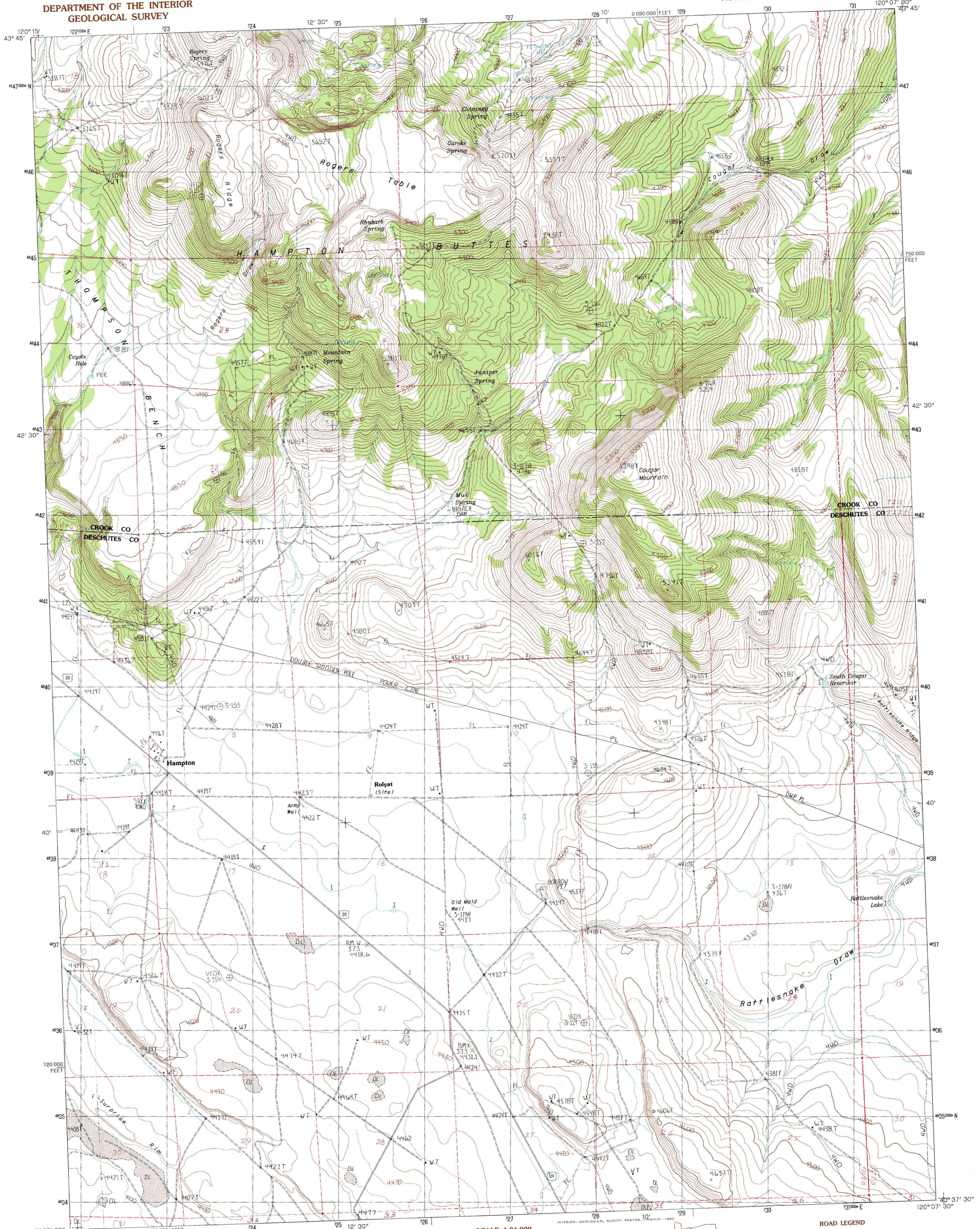


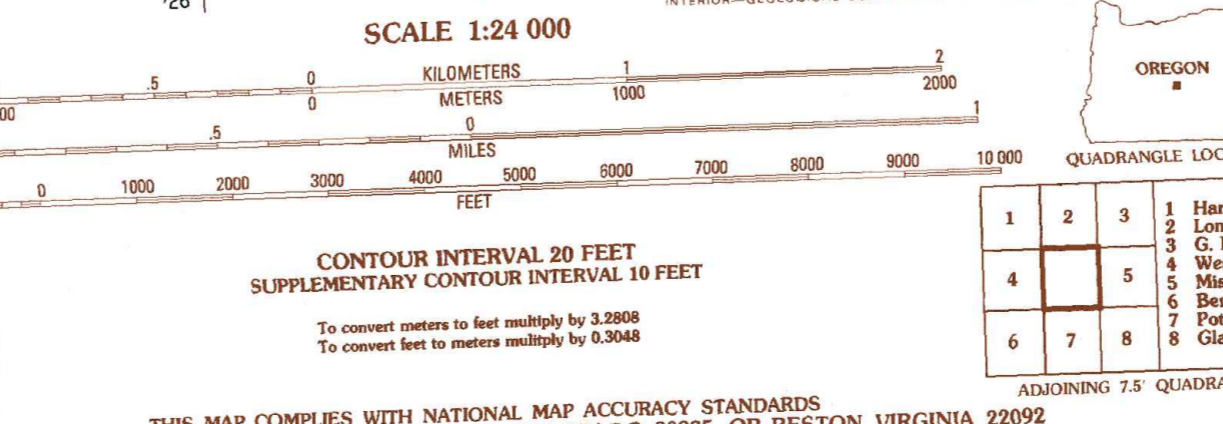
UNITED STATES
DEPARTMENT OF THE INTERIOR
GEOLOGICAL SURVEY

HAMPTON QUADRANGLE
OREGON
7.5 MINUTE SERIES (TOPOGRAPHIC)



PRODUCED BY THE UNITED STATES GEOLOGICAL SURVEY CONTROL BY A.S.G.S. NOS/NOAA COMPILED FROM AERIAL PHOTOGRAPHS TAKEN 1976 FIELD CHECKED 1980 MAP EDITED 1983 PROJECTION LAMBERT CONFORMAL CONIC GRID: 1000-METER UNIVERSAL TRANSVERSE MERCATOR ZONE 10 UTM GRID DECLINATION 1983 MAGNETIC NORTH DECLINATION 1983 VERTICAL DATUM NATIONAL GEODETIC VERTICAL DATUM OF 1929 HORIZONTAL DATUM 1927 NORTH AMERICAN DATUM OF 1983. To place on the predicted North American Datum of 1983, move the projection lines as shown by dashed corner ticks (19 meters north / 88 meters east). There may be private inholdings within the boundaries of any Federal and State Reservations shown on this map.

PROVISIONAL MAP
Produced from original manuscript drawings. Information shown as of date of field check.



ROAD LEGEND

Improved Road
Unimproved Road
Trail

Interstate Route U.S. Route State Route

HAMPTON, OREG.
PROVISIONAL EDITION 1983
43120-F2-TF-024

THIS MAP COMPLIES WITH NATIONAL MAP ACCURACY STANDARDS FOR SALE BY U.S. GEOLOGICAL SURVEY, DENVER, COLORADO 80225, OR RESTON, VIRGINIA 22092