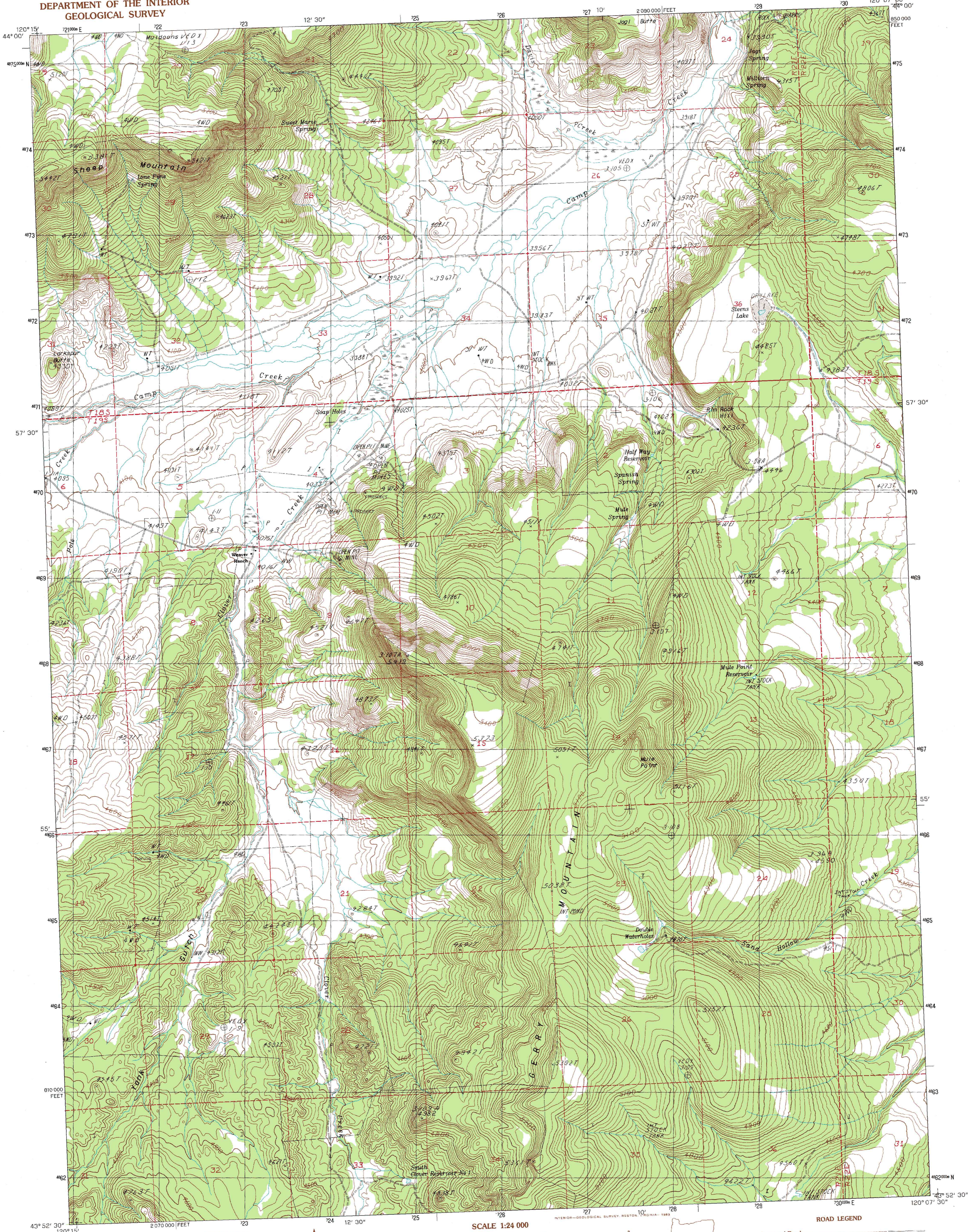


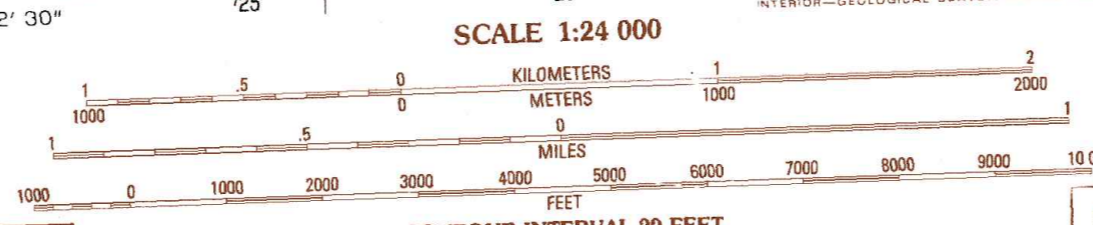
UNITED STATES
DEPARTMENT OF THE INTERIOR
GEOLOGICAL SURVEY

GERRY MTN. QUADRANGLE
OREGON—CROOK CO.
7.5 MINUTE SERIES (TOPOGRAPHIC)



PRODUCED BY THE UNITED STATES GEOLOGICAL SURVEY
CONTROL BY USGS, NOS/NAA
COMPILED FROM AERIAL PHOTOGRAPHS TAKEN 1976
FIELD CHECKED 1979 MAP EDITED 1983
PROJECTION LAMBERT CONFORMAL CONIC
GRID: 1000-METER UNIVERSAL TRANSVERSE MERCATOR ZONE 10
10,000-FOOT STATE GRID TICS OREGON SOUTH ZONE
UTM GRID DECLINATION 157° EAST
1980 MAGNETIC NORTH DECLINATION 18'30" EAST
VERTICAL DATUM: NATIONAL GEODETIC DATUM OF 1929
HORIZONTAL DATUM: 1983 NORTH AMERICAN DATUM
To place on the predicted North American Datum of 1983,
move the projection lines as shown by dashed corner ticks
(19 meters north / 88 meters east)
There may be private inholdings within the boundaries of any
Federal and State Reservations shown on this map

PROVISIONAL MAP
Produced from original
manuscript drawings. Informa-
tion shown as of date of
field check.



ROAD LEGEND

Improved Road.....
Unimproved Road.....
Trail.....

○ Interstate Route ○ U.S. Route ○ State Route

1	2	3	Drake Butte
4	5	4	Arrowwood Point
6	7	5	Liggett Table
		6	Logan Butte
		7	Sand Hollow
		8	Houston Butte
			Long Bars
			G. I. Ranch

ADJOINING 7.5 QUADRANGLE NAMES

GERRY MTN., OREG.
PROVISIONAL EDITION 1983

43120-H2-TF-024

THIS MAP COMPLIES WITH NATIONAL MAP ACCURACY STANDARDS
FOR SALE BY U. S. GEOLOGICAL SURVEY, DENVER, COLORADO 80225, OR RESTON, VIRGINIA 22092