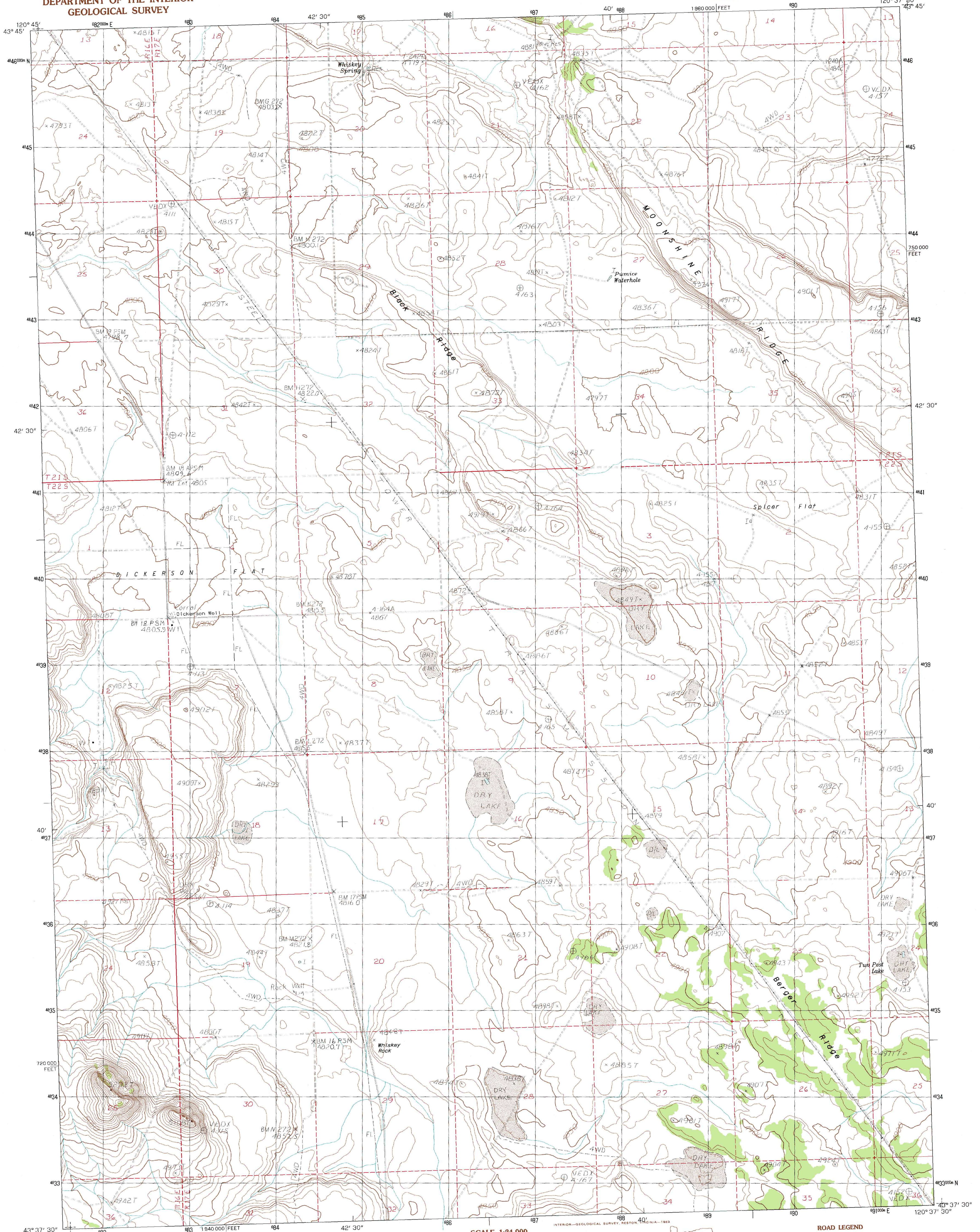


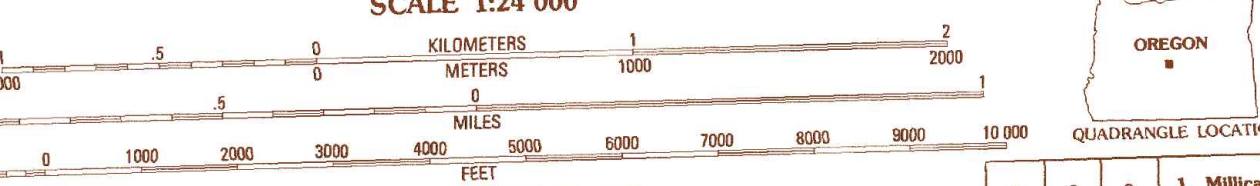
UNITED STATES  
DEPARTMENT OF THE INTERIOR  
GEOLOGICAL SURVEY

DICKERSON FLAT QUADRANGLE  
OREGON—DESCHUTES CO.  
7.5 MINUTE SERIES (TOPOGRAPHIC)



PRODUCED BY THE UNITED STATES GEOLOGICAL SURVEY  
CONTROL BY USGS, NOS/NOAA  
COMPILED FROM AERIAL PHOTOGRAPHS TAKEN 1976  
FIELD CHECKED 1980, MAP EDITED 1983  
PROJECTION LAMBERT CONFORMAL CONIC  
GRID: 1000-METER UNIVERSAL TRANSVERSE MERCATOR, ZONE 10  
GRID: 1000-FOOT STATE GRID TICKS OREGON SOUTH ZONE  
UTM GRID DECLINATION 18°30' EAST  
1980 MAGNETIC NORTH DECLINATION 18°30' EAST  
VERTICAL DATUM NATIONAL GEODETIC VERTICAL DATUM OF 1929  
HORIZONTAL DATUM 1927 NORTH AMERICAN DATUM OF 1983.  
To place on the projected North American Datum of 1983,  
move the projection lines as shown by dashed corner ticks  
(20 meters north / 90 meters east)  
There may be private inholdings within the boundaries of any  
Federal and State Reservations shown on this map

**PROVISIONAL MAP**  
Produced from original  
manuscript drawings. Informa-  
tion shown as of date of  
field check.



SCALE 1:24 000  
CONTOUR INTERVAL 10 FEET  
To convert meters to feet multiply by 3.2808  
To convert feet to meters multiply by 0.3048

QUADRANGLE LOCATION

1	2	3	1 Millican SE
4	5	2 Brothers SW	3 Plot Butte
6	7	5 Soldiers Cap	6 Fox Butte
8	8	7 Walker Butte	8 Last Chance Lake

ADJOINING 7.5' QUADRANGLE NAMES

**ROAD LEGEND**  
Improved Road.....  
Unimproved Road.....  
Trail.....  
Interstate Route U.S. Route State Route

**DICKERSON FLAT, OREG.**  
PROVISIONAL EDITION 1983  
43120-F6-TF-024